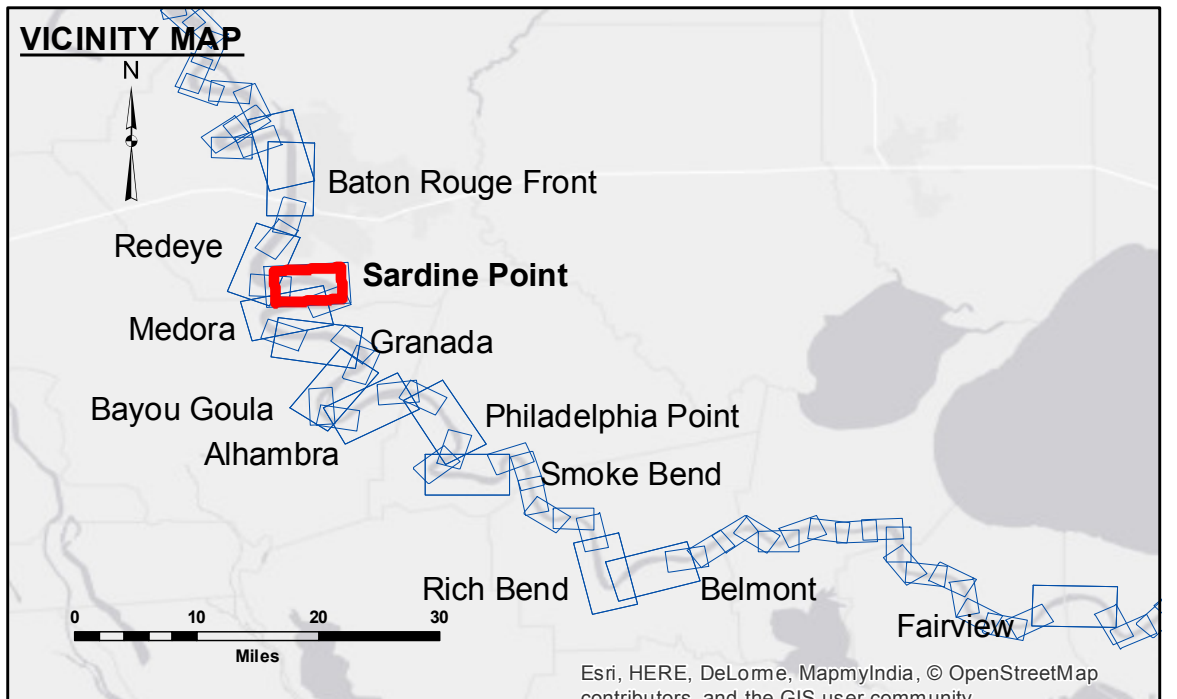


DISCLAIMER: The United States Government furnishes these data and the recipient accepts and uses them with the express understanding that the Government makes no warranty, expressed or implied, concerning the accuracy, completeness, reliability, usability or suitability for any particular purpose of the information. The user is responsible for the results obtained from the use of this information. The application of the data for other than its intended purpose is at the user's risk. Hydrographic survey data is subject to change due to several factors including but not limited to dredging, sedimentation, and channel migration. The user is responsible for the accuracy of the data and for any errors resulting from its use. The information depicted on this map represents the results of a survey conducted on the date of the survey and is not intended to represent the general condition existing at that time. Product maintainers should not rely solely upon it.

Submitted:	Surveyed By: DS/PS
Recommended: Chief Survey Section	Plotted By: BD
Approved: Chief Waterways Maintenance Section	Checked By: AC

U.S. ARMY CORPS OF ENGINEERS
NEW ORLEANS DISTRICT

**MISSISSIPPI RIVER - B.R. TO GULF
SARDINE POINT RECON
MR_06_SDP_20170125
25 January 2017**



LEGEND		SOUNDING DEPTHS	
--- Federal Navigation Channel	● Cable Area	■ 0' and above	 LWRP: 2.4 Gage Reading: BR:23.3 D:14.5 USED:21.8 NGVD Sea Conditions: CALM Vessel Name: M/V LAFOURCHE Survey Type: CONDITION Sounding Frequency***: HIGH
— Federal Navigation Center Line	■ Placement Area	■ 0' to -5'	
— As-built Pipeline/Cable	□ Anchorage Area	■ -5' to -10'	
..... Unconfirmed Pipeline/Cable	⊗ Obstruction Point	■ -10' to -20'	
— Project Depth Contour	★ Beacon, General	■ -20' to -30'	
	◆ Red Navigation Buoy	■ -30' to -35'	
	◆ Wrecks-Submerged	■ -35' to -40'	
		■ -40' to -45'	
		■ -45' and below	
		■ Borrow Area	
		● Shoalest Sounding**	

NOTES:
 Horizontal Coordinate System: North American Datum of 1983 (NAD83), projected to the State Plane Coordinate System (SPCS), Louisiana South Zone. Distance units in U.S. Survey Feet.
 Vertical Datum: Soundings are shown in feet and indicate depths below Low Water Reference Plane 2007 (NGVD).
 Distances on the Mississippi River, above and below Head of Passes are shown at 1 mile intervals.
 The location of navigation aids are based on and provided by the U.S. Coast Guard and USACE crew.
 2010 Aerial Photography data source: NAIP, USDA-FSA-APFO Aerial Photography Field Office.
 Reference is N.O.A. Navigation Chart No. 11370.
 *** Shoalest Sounding per Quarter per Reach.
 *** High frequency (200 kHz) survey data represents the first signal return at a sounding location and will include suspended solids, known as "fluff", if present. Low frequency (20 kHz) survey data normally penetrates through this "fluff" layer to depict elevations of consolidated bottom material. Low frequency accuracies may vary depending on channel conditions and fathometer settings.