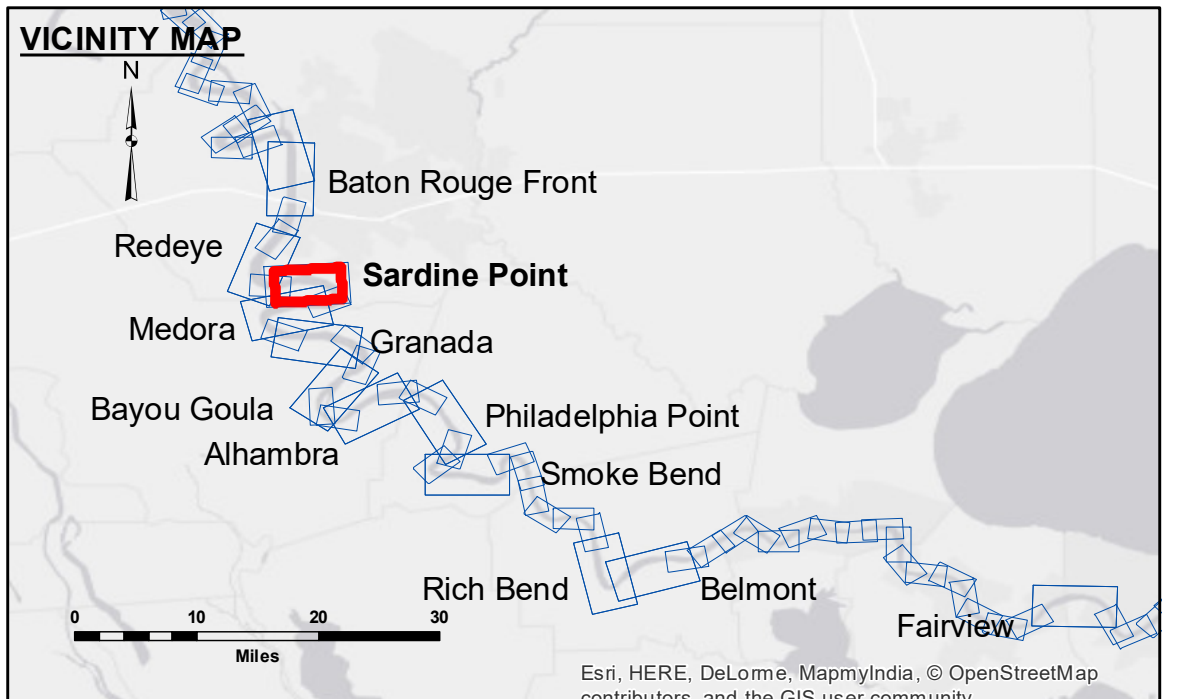


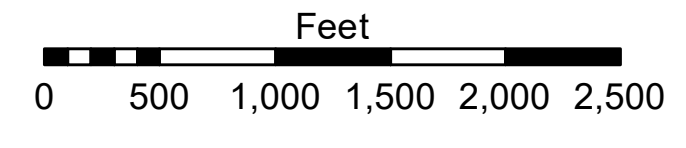
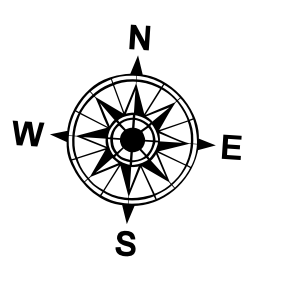
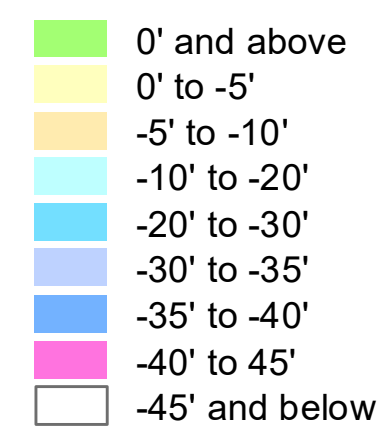
DISCLAIMER: The United States Government furnishes these data and the recipient accepts and uses them with the express understanding that the data are not intended for any purpose other than that for which they were prepared. The user is responsible for the results of any use of the data for other than its intended purpose. The application of the data for other than its intended purpose is at the user's risk. The user is responsible for the results of any use of the data for other than its intended purpose. The application of the data for other than its intended purpose is at the user's risk. The user is responsible for the results of any use of the data for other than its intended purpose. The application of the data for other than its intended purpose is at the user's risk.

U.S. ARMY CORPS OF ENGINEERS NEW ORLEANS DISTRICT	
Submitted:	Surveyed By: DS/PS
Recommended: Chief Survey Section	Plotted By: BD
Approved: Chief Waterways Maintenance Section	Checked By: AC

**MISSISSIPPI RIVER - B.R. TO GULF
SARDINE POINT RECON
MR_06_SDP_20171011_CS
11 October 2017**



LEGEND	
--- Federal Navigation Channel	○ Cable Area
— Federal Navigation Center Line	□ Placement Area
— As-built Pipeline/Cable	□ Anchorage Area
..... Unconfirmed Pipeline/Cable	⊗ Obstruction Point
— Project Depth Contour	✈ Wrecks-Submerged
□ Borrow Area	★ Beacon, General
● Shoalest Sounding**	◆ Red Navigation Buoy
◆ Green Navigation Buoy	



LWRP: 2.4
 Gage Reading: BR:7.08 D:4.70 USED:6.7 NGVD
 Sea Conditions: CALM
 Vessel Name: M/V LAFOURCHE
 Survey Type: CONDITION
 Sounding Frequency***: HIGH

NOTES:
 Horizontal Coordinate System:
 North American Datum of 1983 (NAD83), projected to the State Plane Coordinate System (SPCS), Louisiana South Zone. Distance units in U.S. Survey Feet.
 Vertical Datum:
 Soundings are shown in feet and indicate depths below Low Water Reference Plane 2007 (NGVD).
 Distances on the Mississippi River, above and below Head of Passes are shown at 1 mile intervals.
 The location of navigation aids are base on and provided by the U.S. Coast Guard and USACE crew.
 2010 Aerial Photography data source: NAIP, USDA-FSA-APFO Aerial Photography Field Office.
 Reference is N.O.A. Navigation Chart No. 11370.
 ** Shoalest Sounding per Quarter per Reach.
 *** High frequency (200 kHz) survey data represents the first signal return at a sounding location and will include suspended solids, known as "fluff", if present. Low frequency (20 kHz) survey data normally penetrates through this "fluff" layer to depict elevations of consolidated bottom material. Low frequency accuracies may vary depending on channel conditions and fathometer settings.

**Sheet Reference Number
6 of 97**