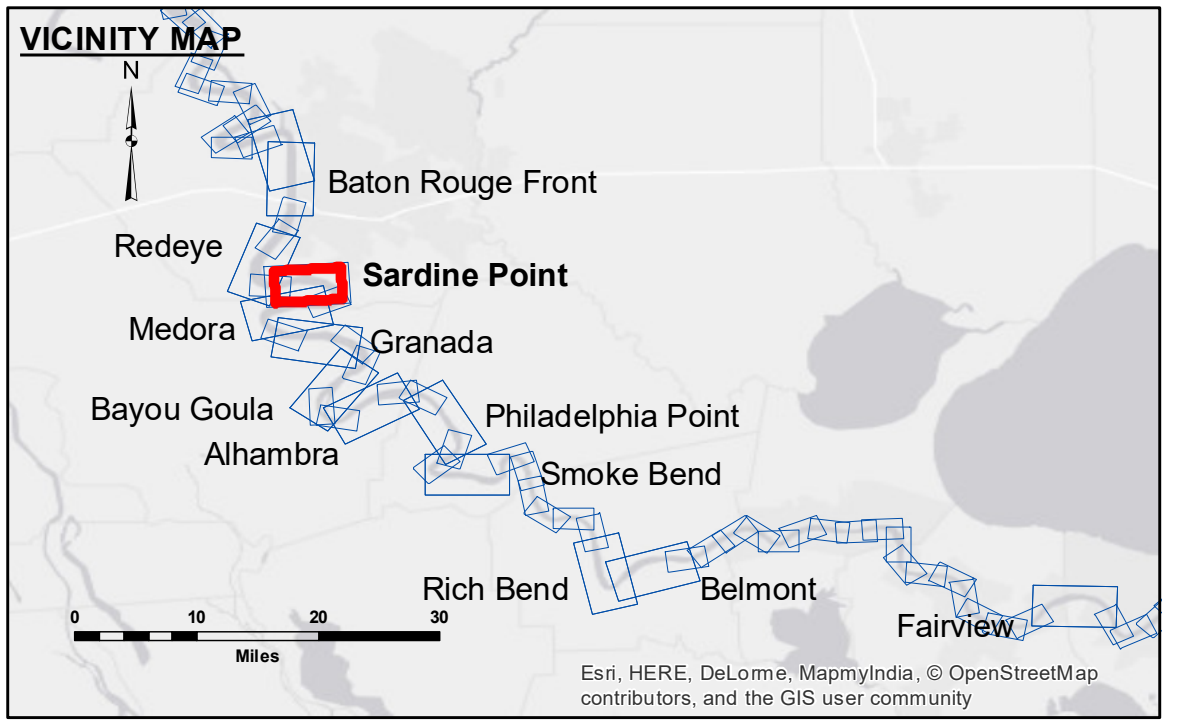


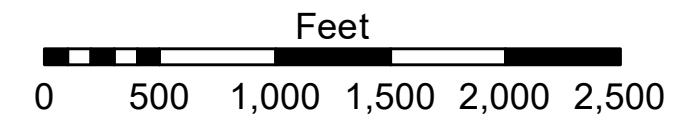
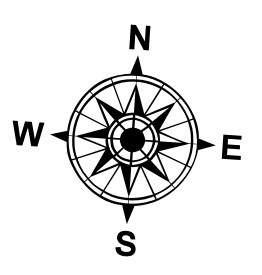
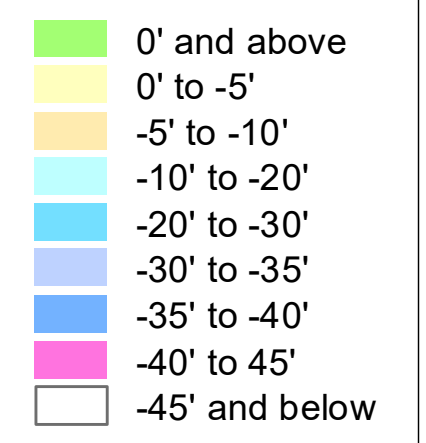
DISCLAIMER: The United States Government furnishes these data and the recipient accepts and uses them with the express understanding that the Government makes no warranty, expressed or implied, as to the accuracy, completeness, reliability, usability or suitability for any particular purpose of the information. The user is responsible for the results obtained from the use of this information. The application of the data for other than its intended purpose is at the user's risk. The information depicted on this map represents the results of a survey conducted on or after the date of the survey. The information is not to be used for any purpose other than that for which it was intended. The information is not to be used for any purpose other than that for which it was intended. The information is not to be used for any purpose other than that for which it was intended.

Submitted:	Surveyed By: DS/PS
Recommended: Chief Survey Section	Plotted By: BD
Approved: Chief Waterways Maintenance Section	Checked By: AC

**MISSISSIPPI RIVER - B.R. TO GULF
SARDINE POINT RECON
MR_06_SDP_20171114_CS
14 November 2017**



LEGEND	
--- Federal Navigation Channel	● Cable Area
— Federal Navigation Center Line	□ Placement Area
— As-built Pipeline/Cable	□ Anchorage Area
..... Unconfirmed Pipeline/Cable	⊗ Obstruction Point
— Project Depth Contour	✈ Wrecks-Submerged
□ Borrow Area	★ Beacon, General
● Shoalest Sounding**	◆ Red Navigation Buoy
◆ Green Navigation Buoy	



LWRP: 2.4
Gage Reading: BR:13.48 D:7.78 USED:12.5 NGVD
Sea Conditions: CALM
Vessel Name: M/V LAFOURCHE
Survey Type: CONDITION
Sounding Frequency***: HIGH

NOTES:
Horizontal Coordinate System: North American Datum of 1983 (NAD83), projected to the State Plane Coordinate System (SPCS), Louisiana South Zone. Distance units in U.S. Survey Feet.
Vertical Datum: Soundings are shown in feet and indicate depths below Low Water Reference Plane 2007 (NGVD).
Distances on the Mississippi River, above and below Head of Passes are shown at 1 mile intervals.
The location of navigation aids are base on and provided by the U.S. Coast Guard and USACE crew.
2010 Aerial Photography data source: NAIP, USDA-FSA-APFO Aerial Photography Field Office.
Reference is N.O.A. Navigation Chart No. 11370.
*** Shoalest Sounding per Quarter per Reach.
*** High frequency (200 kHz) survey data represents the first signal return at a sounding location and will include suspended solids, known as "fluff", if present. Low frequency (20 kHz) survey data normally penetrates through this "fluff" layer to depict elevations of consolidated bottom material. Low frequency accuracies may vary depending on channel conditions and fathometer settings.

**Sheet Reference Number
6 of 97**