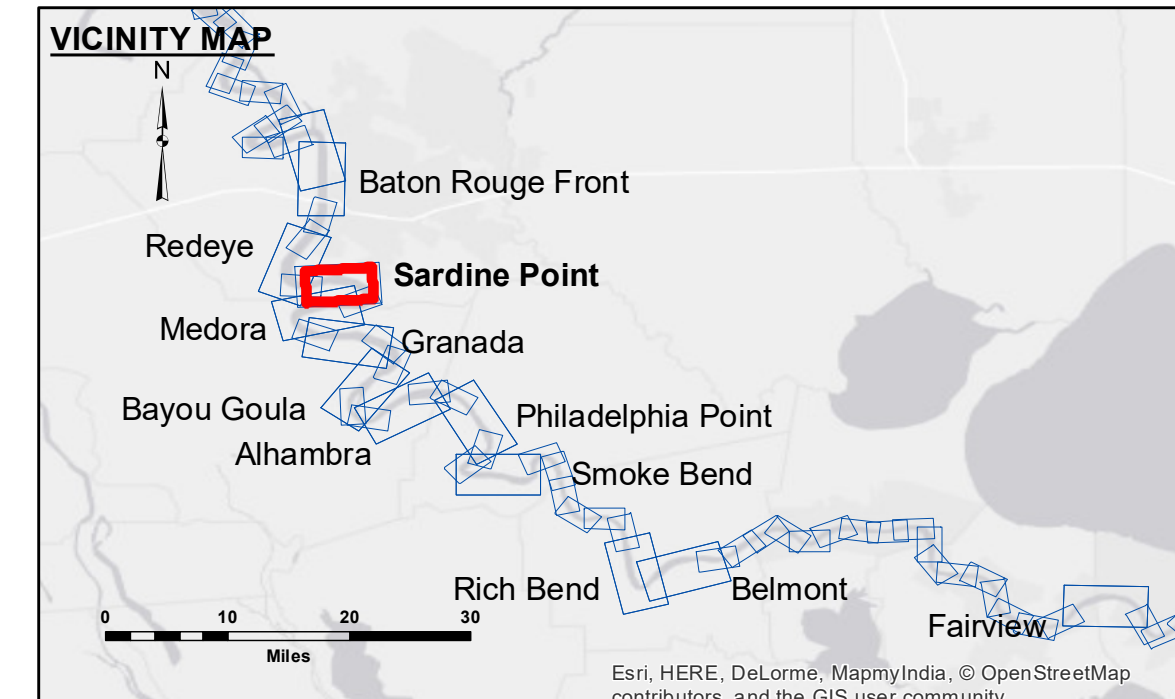


DISCLAIMER: The United States Government furnishes these data and the recipient accepts and uses them with the express understanding that the data are not warranted for any particular purpose of the recipient, and that the Government assumes no liability whatsoever for any use made thereof. These data belong to the Government. Therefore, the recipient may not transfer, reproduce, or disseminate these data to others without the written approval of the United States Army Corps of Engineers. The recipient shall be responsible for changes in the hydrographical conditions which develop after the date of the survey. The information depicted on this map represents the results of a survey conducted on the date indicated. The Corps of Engineers does not consider this information to represent the general condition existing at that time.

ACCURACY: The United States Government furnishes these data and the recipient accepts and uses them with the express understanding that the data are not warranted for any particular purpose of the recipient, and that the Government assumes no liability whatsoever for any use made thereof. These data belong to the Government. Therefore, the recipient may not transfer, reproduce, or disseminate these data to others without the written approval of the United States Army Corps of Engineers. The recipient shall be responsible for changes in the hydrographical conditions which develop after the date of the survey. The information depicted on this map represents the results of a survey conducted on the date indicated. The Corps of Engineers does not consider this information to represent the general condition existing at that time.

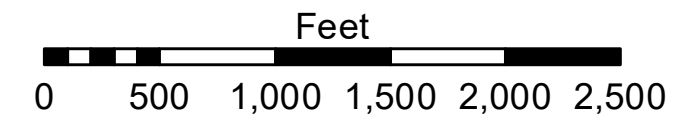
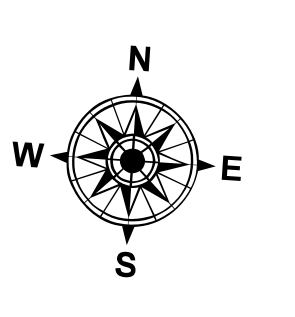
U.S. ARMY CORPS OF ENGINEERS NEW ORLEANS DISTRICT	
Submitted:	Surveyed By: DS/PS
Recommended:	Plotted By: MS
Checked:	Checked By: MS
Approved:	Checked By: MS

**MISSISSIPPI RIVER - B. R. TO GULF
SARDINE POINT RECON
MR_06_SDP_20171127_CS
27 November 2017**



LEGEND

— Federal Navigation Channel	○ Cable Area	□ Borrow Area	■ 0' and above
— Federal Navigation Center Line	■ Placement Area	● Shoalest Sounding**	■ 0' to -5'
— As-built Pipeline/Cable	□ Anchorage Area	★ Beacon, General	■ -5' to -10'
..... Unconfirmed Pipeline/Cable	⊗ Obstruction Point	◆ Red Navigation Buoy	■ -10' to -20'
— Project Depth Contour	✙ Wrecks-Submerged	◆ Green Navigation Buoy	■ -20' to -30'
			■ -30' to -35'
			■ -35' to -40'
			■ -40' to -45'
			■ -45' and below



LWRP: 2.4
 Gage Reading: BR:12.51 DON:6.97 USED: 11.6 NGVD
 Sea Conditions: CALM
 Vessel Name: M/V LAFORUCHE
 Survey Type: RECON
 Sounding Frequency***: HIGH

NOTES:
 Horizontal Coordinate System:
 North American Datum of 1983 (NAD83), projected to the State Plane
 Coordinate System (SPCS), Louisiana South Zone. Distance units in U.S. Survey Feet.
 Vertical Datum:
 Soundings are shown in feet and indicate depths below Low Water Reference Plane 2007 (NGVD).
 Distances on the Mississippi River, above and below Head of Passes are shown at 1 mile intervals.
 The location of navigation aids are based on and provided by the U.S. Coast Guard and USACE crew.
 2010 Aerial Photography data source: NAIP, USDA-FSA-APFO Aerial Photography Field Office.
 Reference is N.O.A. Navigation Chart No. 11370.
 ** Shoalest Sounding per Quarter per Reach.
 *** High frequency (200 kHz) survey data represents the first signal return at a sounding location and will include suspended solids, known as "fluff", if present. Low frequency (20 kHz) survey data normally penetrates through this "fluff" layer to depict elevations of consolidated bottom material. Low frequency accuracies may vary depending on channel conditions and fathometer settings.

**Sheet Reference Number
6 of 97**