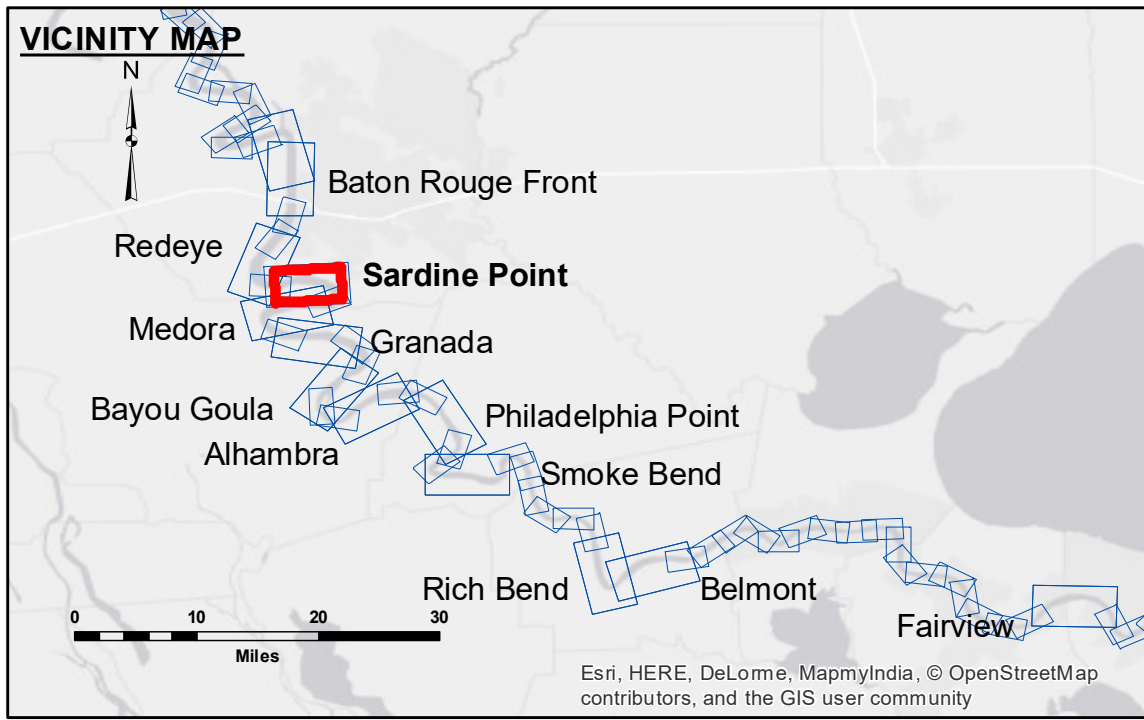


DISCLAIMER: The data represents the results of data collection processing for a specific US Army Corps of Engineers project. It is only valid for its intended use, control, time and accuracy specifications. The user is responsible for the results and any liability. The application of the data for other than its intended purpose is not recommended. Data Contaminants: Hydrographic survey data is subject to change due to several factors including but not limited to dredging, shoaling, and other natural processes. The user is responsible for the data and any liability. The information depicted on this map represents the results of a survey conducted on the date shown and is not intended to represent the general condition existing at that time. Considered for internal use. Product maintainers should not rely solely upon it.

Submitted:	Surveyed By: DS/PS
Recommended: Chief, Survey Section	Plotted By: BD
Approved: Chief, Waterways Maintenance Section	Checked By: AC

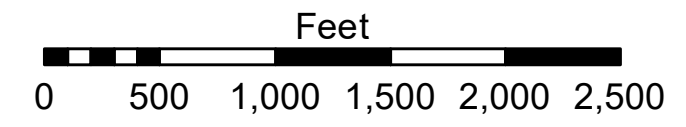
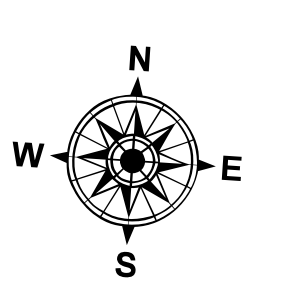
U.S. ARMY CORPS OF ENGINEERS
NEW ORLEANS DISTRICT

**MISSISSIPPI RIVER - B.R. TO GULF
SARDINE POINT RECON
MR_06_SDP_20180319_CS
19 March 2018**



LEGEND

— Federal Navigation Channel	• Cable Area	□ Borrow Area	0' and above
— Federal Navigation Center Line	□ Placement Area	● Shoalest Sounding**	0' to -5'
— As-built Pipeline/Cable	□ Anchorage Area	★ Beacon, General	-5' to -10'
..... Unconfirmed Pipeline/Cable	⊗ Obstruction Point	◆ Red Navigation Buoy	-10' to -20'
— Project Depth Contour	✶ Wrecks-Submerged	◆ Green Navigation Buoy	-20' to -30'
			-30' to -35'
			-35' to -40'
			-40' to -45'
			-45' and below



LWRP: 2.4
 Gage Reading: BR:43.72 D:31.76 USED:41.7 NGVD
 Sea Conditions: CHOPPY
 Vessel Name: M/V LAFOURCHE
 Survey Type: CONDITION
 Sounding Frequency**: HIGH

NOTES:
 Horizontal Coordinate System:
 North American Datum of 1983 (NAD83), projected to the State Plane
 Coordinate System (SPCS), Louisiana South Zone. Distance units in U.S. Survey Feet.
 Vertical Datum:
 Soundings are shown in feet and indicate depths below Low Water Reference Plane 2007 (NGVD).
 Distances on the Mississippi River, above and below Head of Passes are shown
 at 1 mile intervals.
 The location of navigation aids are base on and provided by the U.S. Coast Guard and USACE crew.
 2010 Aerial Photography data source: NAIP, USDA-FSA-APFO Aerial Photography Field Office.
 Reference is N.O.A. Navigation Chart No. 11370.
 ** Shoalest Sounding per Quarter per Reach.
 *** High frequency (200 kHz) survey data represents the first signal return at a sounding
 location and will include suspended solids, known as "fluff", if present. Low frequency (20 kHz)
 survey data normally penetrates through this "fluff" layer to depict elevations of consolidated bottom
 material. Low frequency accuracies may vary depending on channel conditions and fathometer
 settings.

**Sheet
 Reference
 Number
 6 of 97**