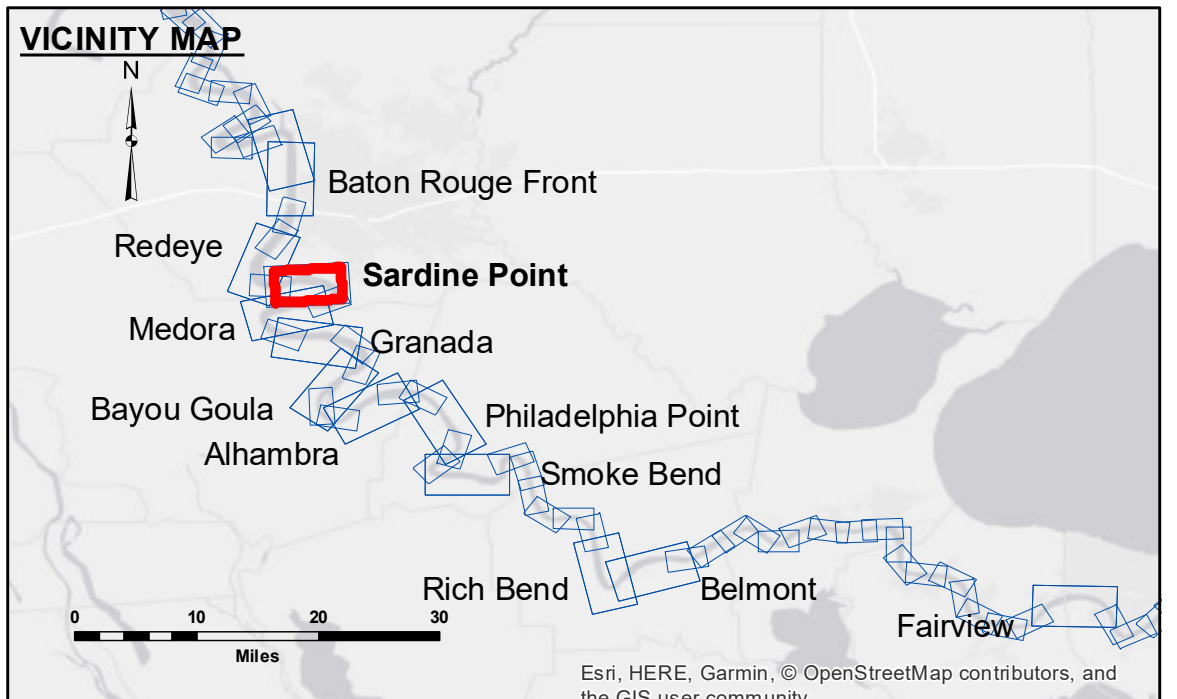


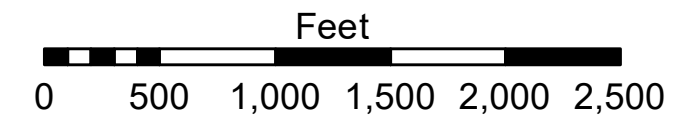
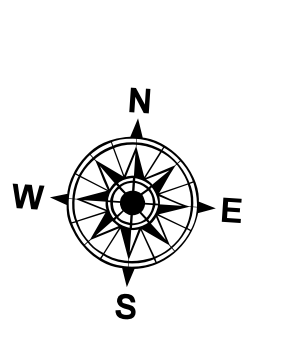
**DISCLAIMER:** The United States Government furnishes these data and the recipient accepts and uses them with the express understanding that they are not to be used for any purpose other than that for which they were provided. The user is responsible for the results of any use of these data. The application of the data for other than its intended purpose is at the user's risk. The user is responsible for the results of any use of these data. The application of the data for other than its intended purpose is at the user's risk. The user is responsible for the results of any use of these data. The application of the data for other than its intended purpose is at the user's risk.

U.S. ARMY CORPS OF ENGINEERS NEW ORLEANS DISTRICT	
Submitted:	Surveyed By: JH/PS
Recommended: Chief Survey Section	Plotted By: AO
Approved: Chief Waterways Maintenance Section	Checked By: AO

**MISSISSIPPI RIVER - B.R. TO GULF  
SARDINE POINT RECON  
MR\_06\_SDP\_20181126\_CS  
26 November 2018**



LEGEND		LEGEND		LEGEND	
--- Federal Navigation Channel	● Cable Area	□ Borrow Area	■ 0' and above	⬇ Shoalest Sounding**	■ 0' to -5'
— Federal Navigation Center Line	□ Placement Area	● Beacons, General	■ -5' to -10'	★ Red Navigation Buoy	■ -10' to -20'
— As-built Pipeline/Cable	□ Anchorage Area	★ Beacon, General	■ -20' to -30'	◆ Green Navigation Buoy	■ -30' to -35'
⋯ Unconfirmed Pipeline/Cable	⊗ Obstruction Point	◆ Red Navigation Buoy	■ -35' to -40'		■ -40' to 45'
— Project Depth Contour	✈ Wrecks-Submerged	◆ Green Navigation Buoy	■ -45' and below		■ -45' and below



LWRP: 2.4  
Gage Reading: BR:31.2D:21.0 USED:29.4 NGVD  
Sea Conditions: 1'  
Vessel Name: LAFORCHE  
Survey Type: CS  
Sounding Frequency\*\*: HIGH

**NOTES:**  
Horizontal Coordinate System:  
North American Datum of 1983 (NAD83), projected to the State Plane Coordinate System (SPCS), Louisiana South Zone. Distance units in U.S. Survey Feet.  
Vertical Datum:  
Soundings are shown in feet and indicate depths below Low Water Reference Plane 2007 (NGVD).  
Distances on the Mississippi River, above and below Head of Passes are shown at 1 mile intervals.  
The location of navigation aids are base on and provided by the U.S. Coast Guard and USACE crew.  
2015 Aerial Photography data source: NAIP, USDA-FSA-APFO Aerial Photography Field Office.  
Reference is N.O.A. Navigation Chart No. 11370.  
\*\* Shoalest Sounding per Quarter per Reach.  
\*\*\* High frequency (200 kHz) survey data represents the first signal return at a sounding location and will include suspended solids, known as "fluff", if present. Low frequency (20 kHz) survey data normally penetrates through this "fluff" layer to depict elevations of consolidated bottom material. Low frequency accuracies may vary depending on channel conditions and fathometer settings.

**Sheet Reference Number  
6 of 97**