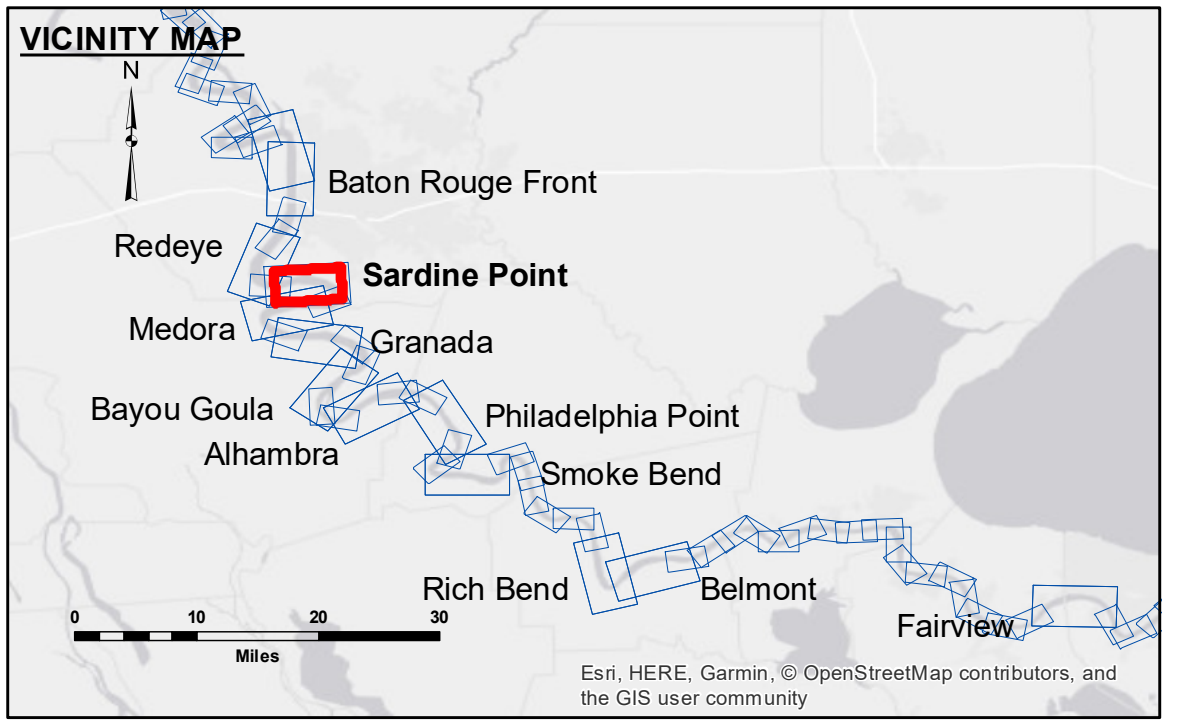


DISCLAIMER: The United States Government furnishes these data and the recipient accepts and uses them with the express understanding that they are not to be used for any purpose other than that for which they were prepared. The user is responsible for the results of any use of these data. The application of the data for other than its intended purpose is not warranted. Hydrographic survey data is subject to change due to several factors including but not limited to dredging, sedimentation, and changes in the hydrographical conditions when developed after the date of the survey. The information depicted on this map represents the results of a survey conducted by the United States Army Corps of Engineers and is not to be used for any purpose other than that for which it was prepared. The information depicted on this map represents the results of a survey conducted by the United States Army Corps of Engineers and is not to be used for any purpose other than that for which it was prepared.

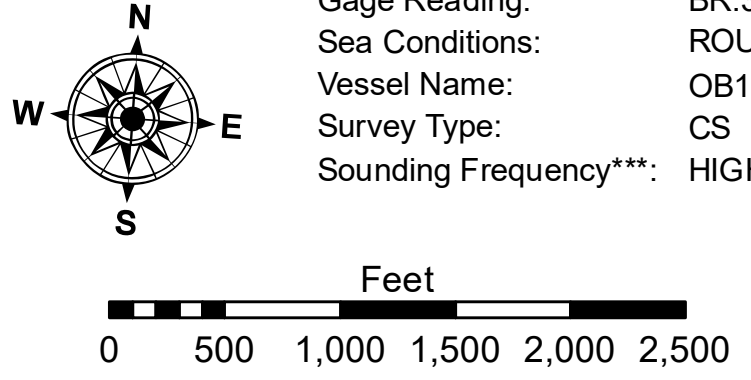
U.S. ARMY CORPS OF ENGINEERS NEW ORLEANS DISTRICT	
Submitted:	Surveyed By: DS/JH
Recommended: Chief, Survey Section	Plotted By: AO
Approved: Chief, Waterways Maintenance Section	Checked By: AO

**MISSISSIPPI RIVER - B.R. TO GULF
SARDINE POINT RECON
MR_06_SDP_20190122_CS
22 January 2019**



LEGEND		SOUNDING DEPTHS	
--- Federal Navigation Channel	○ Cable Area	0' and above	0' to -5'
— Federal Navigation Center Line	□ Placement Area	-5' to -10'	-10' to -20'
— As-built Pipeline/Cable	□ Anchorage Area	-20' to -30'	-30' to -35'
..... Unconfirmed Pipeline/Cable	⊗ Obstruction Point	-35' to -40'	-40' to -45'
— Project Depth Contour	✈ Wrecks-Submerged	-45' and below	
	□ Borrow Area		
	● Shoalest Sounding**		
	★ Beacon, General		
	◆ Red Navigation Buoy		
	◆ Green Navigation Buoy		

LWRP: 2.4
Gage Reading: BR:38.8D:28.3 USED:37.0 NGVD
Sea Conditions: ROUGH
Vessel Name: OB189
Survey Type: CS
Sounding Frequency:** HIGH



NOTES:
 Horizontal Coordinate System:
 North American Datum of 1983 (NAD83), projected to the State Plane Coordinate System (SPCS), Louisiana South Zone. Distance units in U.S. Survey Feet.
 Vertical Datum:
 Soundings are shown in feet and indicate depths below Low Water Reference Plane 2007 (NGVD).
 Distances on the Mississippi River, above and below Head of Passes are shown at 1 mile intervals.
 The location of navigation aids are base on and provided by the U.S. Coast Guard and USACE crew.
 2015 Aerial Photography data source: NAIP, USDA-FSA-APFO Aerial Photography Field Office.
 Reference is N.O.A. Navigation Chart No. 11370.
 ** Shoalest Sounding per Quarter per Reach.
 *** High frequency (200 kHz) survey data represents the first signal return at a sounding location and will include suspended solids, known as "fluff", if present. Low frequency (20 kHz) survey data normally penetrates through this "fluff" layer to depict elevations of consolidated bottom material. Low frequency accuracies may vary depending on channel conditions and fathometer settings.

**Sheet Reference Number
6 of 97**