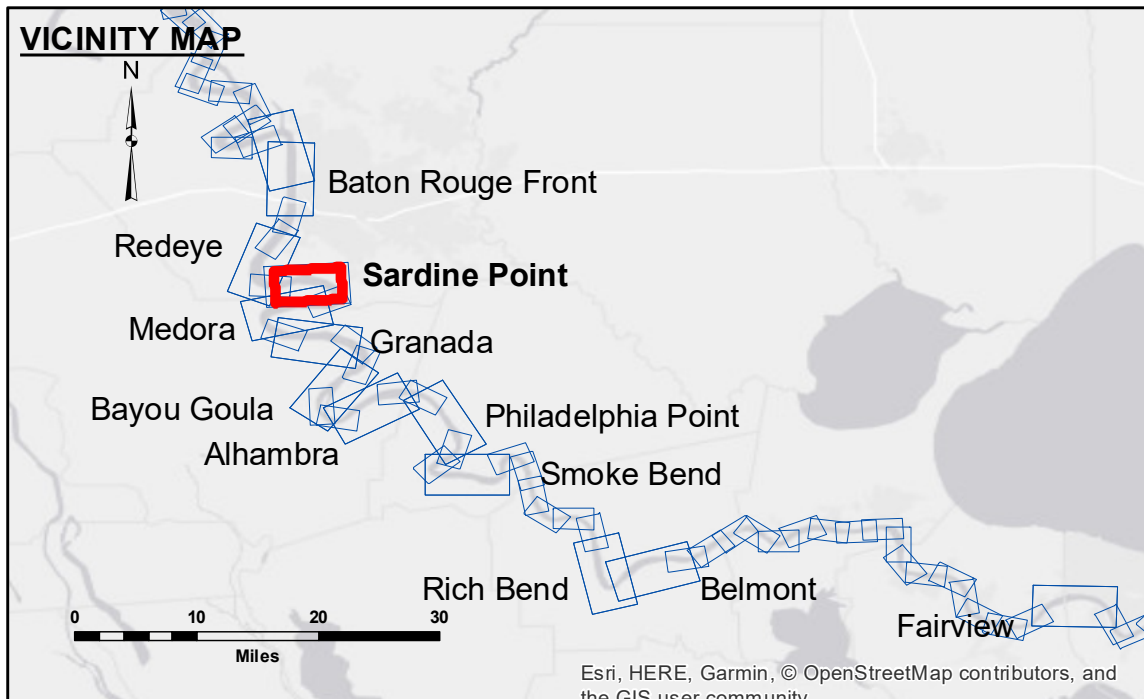


**DISCLAIMER:** The United States Government furnishes these data and the recipient accepts and uses them with the express understanding that they are not to be used for any purpose other than that for which they were prepared. The user is responsible for the results of any use of these data. The application of the data for other than its intended purpose is not warranted. Hydrographic survey data is subject to change due to several factors including but not limited to dredging, sedimentation, and changes in bathymetry. The Corps of Engineers does not assume any liability for changes in the hydrographic conditions when developed after the date of the survey. Product maintainers should not rely solely upon this information.

U.S. ARMY CORPS OF ENGINEERS NEW ORLEANS DISTRICT		
Submitted:	Surveyed By: DUSJH	Plotted By: BD
Recommended: Chief Survey Section	Checked By: AC	
Approved: Chief Waterways Maintenance Section		

**MISSISSIPPI RIVER - B.R. TO GULF  
SARDINE POINT RECON  
MR\_06\_SDP\_20190617\_CS  
17 June 2019**



LEGEND		SOUNDING DEPTHS	
--- Federal Navigation Channel	○ Cable Area	0' and above	0' to -5'
— Federal Navigation Center Line	□ Placement Area	-5' to -10'	-10' to -20'
— As-built Pipeline/Cable	□ Anchorage Area	-20' to -30'	-30' to -35'
..... Unconfirmed Pipeline/Cable	⊗ Obstruction Point	-35' to -40'	-40' to -45'
— Project Depth Contour	✈ Wrecks-Submerged	-45' and below	
	□ Borrow Area		
	● Shoalest Sounding**		
	★ Beacon, General		
	◆ Red Navigation Buoy		
	◆ Green Navigation Buoy		

LWRP: 2.4  
 Gage Reading: BR:43.6 D:31.3 USED:41.5 NGVD  
 Sea Conditions: CALM  
 Vessel Name: OB-189  
 Survey Type: CONDITION  
 Sounding Frequency\*\*\*: HIGH

**NOTES:**  
 Horizontal Coordinate System:  
 North American Datum of 1983 (NAD83), projected to the State Plane Coordinate System (SPCS), Louisiana South Zone. Distance units in U.S. Survey Feet.  
 Vertical Datum:  
 Soundings are shown in feet and indicate depths below Low Water Reference Plane 2007 (NGVD).  
 Distances on the Mississippi River, above and below Head of Passes are shown at 1 mile intervals.  
 The location of navigation aids are base on and provided by the U.S. Coast Guard and USACE crew.  
 2015 Aerial Photography data source: NAIP, USDA-FSA-APFO Aerial Photography Field Office.  
 Reference is N.O.A. Navigation Chart No. 11370.  
 \*\*\* Shoalest Sounding per Quarter per Reach.  
 \*\*\* High frequency (200 kHz) survey data represents the first signal return at a sounding location and will include suspended solids, known as "fluff", if present. Low frequency (20 kHz) survey data normally penetrates through this "fluff" layer to depict elevations of consolidated bottom material. Low frequency accuracies may vary depending on channel conditions and fathometer settings.

**Sheet Reference Number  
6 of 97**