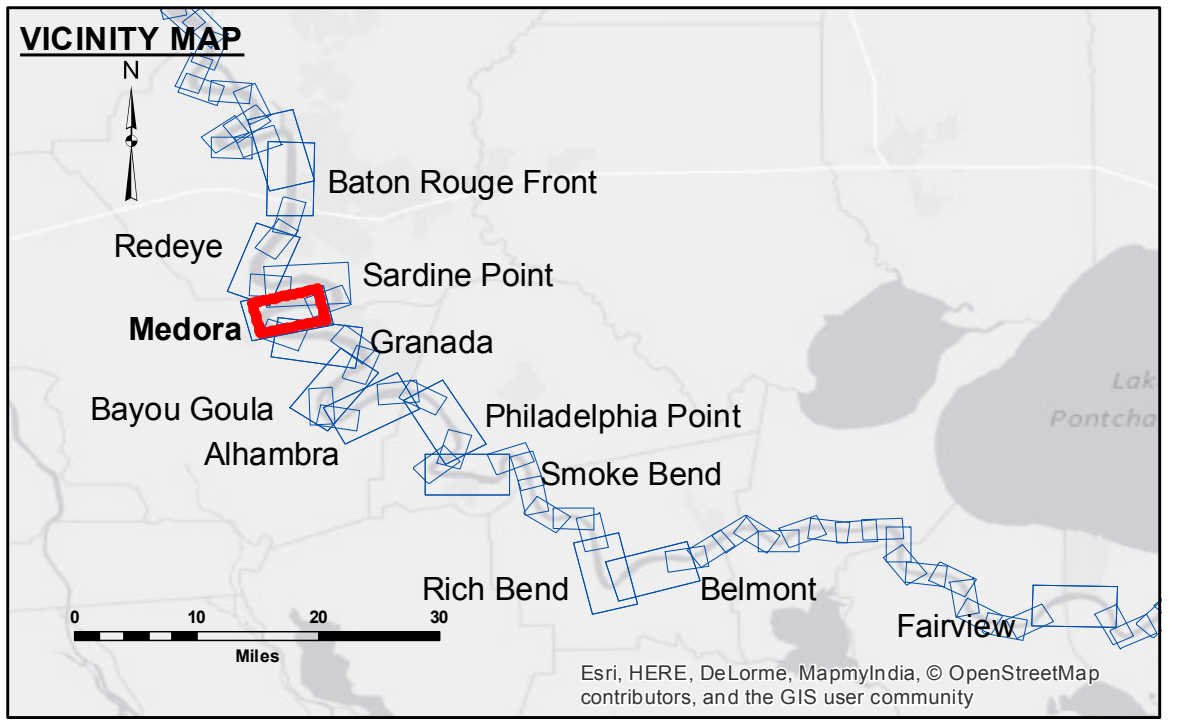


DISCLAIMER

The data represented on this map is the property of the United States Government and is loaned to you for your use only. It is not to be distributed, reproduced, or used for any purpose other than that for which it was originally prepared. The user is responsible for the accuracy, completeness, and reliability of the data. The user is not to be held liable for any damage or injury resulting from the use of this data. The information depicted on this map represents the results of a survey conducted by the United States Army Corps of Engineers. It is not to be used for any purpose other than that for which it was originally prepared. The user is responsible for the accuracy, completeness, and reliability of the data. The user is not to be held liable for any damage or injury resulting from the use of this data.

U.S. ARMY CORPS OF ENGINEERS NEW ORLEANS DISTRICT	
Submitted:	Checked By: MSK
Recommended: Chief, Survey Section	Checked By: MSK
Approved:	Checked By: MSK
Surveyed By: DS, JA	Plotted By: BTD



LEGEND

--- Federal Navigation Channel	● Cable Area	□ Borrow Area	■ 0' and above
— Federal Navigation Center Line	▭ Placement Area	● Shoalest Sounding**	■ 0' to -5'
— As-built Pipeline/Cable	⊗ Anchorage Area	☆ Beacon, General	■ -5' to -10'
⋯ Unconfirmed Pipeline/Cable	⊗ Obstruction Point	◆ Red Navigation Buoy	■ -10' to -20'
— Project Depth Contour	✈ Wrecks-Submerged	◆ Green Navigation Buoy	■ -20' to -30'
			■ -30' to -35'
			■ -35' to -40'
			■ -40' to 45'
			■ -45' and below

LWRP: 2.1
 Gage Reading: BR:31.23 D:22.09 USED:28.4 NGVD
 Sea Conditions: CALM, SUNNY
 Vessel Name: M/V LAFORCHE
 Survey Type: CONDITION
 Sounding Frequency***: HIGH

Horizontal Coordinate System:
 North American Datum of 1983 (NAD83), projected to the State Plane
 Coordinate System (SPCS), Louisiana South Zone. Distance units in U.S. Survey Feet.

Vertical Datum:
 Soundings are shown in feet and indicate depths below Low Water Reference Plane 2007 (NGVD).
 Distances on the Mississippi River, above and below Head of Passes are shown
 at 1 mile intervals.

The location of navigation aids are based on and provided by the U.S. Coast Guard and USACE crew.
 2010 Aerial Photography data source: NAIP, USDA-FSA-APFO Aerial Photography Field Office.

Reference is N.O.A.A. Navigation Chart No. 11370.
 ** Shoalest Sounding per Quarter per Reach.
 *** High frequency (200 kHz) survey data represents the first signal return at a sounding
 location and will include suspended solids, known as "fluff", if present. Low frequency (20 kHz)
 survey data normally penetrates through this "fluff" layer to depict elevations of consolidated bottom
 material. Low frequency accuracies may vary depending on channel conditions and bathymetry
 settings.

MISSISSIPPI RIVER - B.R. TO GULF
MEDORA RECON
MR_08_MED_20151229
29 December 2015

Sheet Reference Number
8 of 97