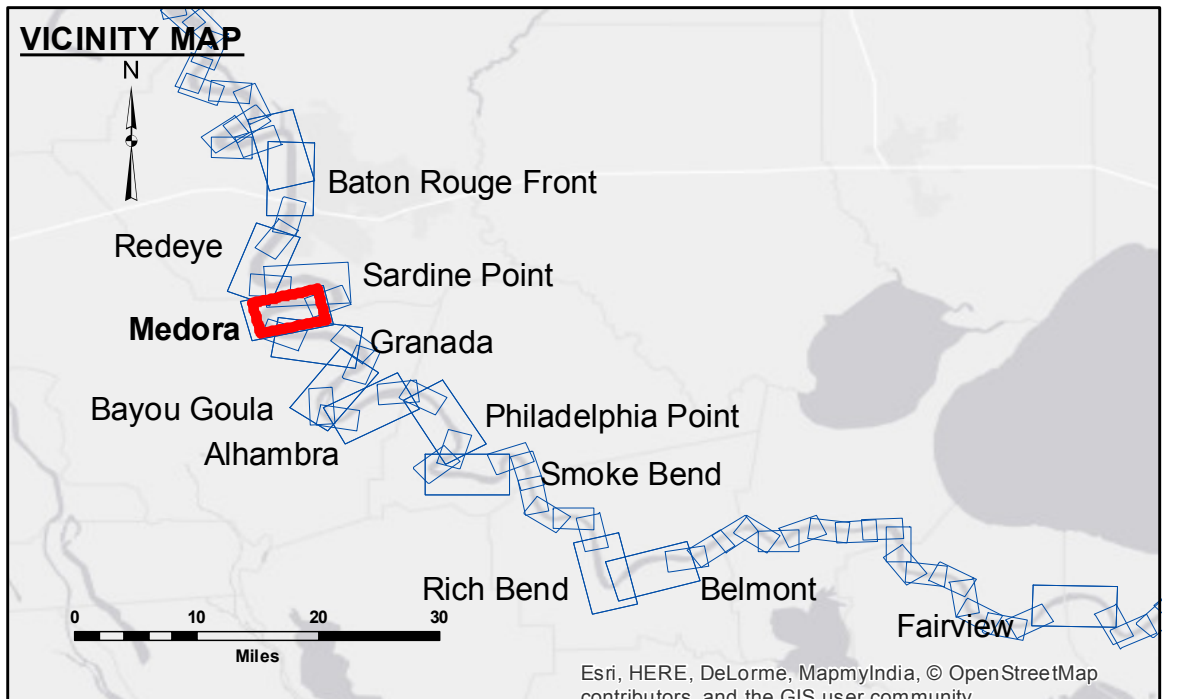


DIKE NO.	DIKE ELEVATION
1	-10 NGVD OR -12 LWRP
2	-4 NGVD OR -6 LWRP
3	-2 NGVD OR -0.1 LWRP



**LEGEND**

--- Federal Navigation Channel	○ Cable Area	□ Borrow Area	■ 0' and above
— Federal Navigation Center Line	□ Placement Area	● Shoalest Sounding**	■ 0' to -5'
— As-built Pipeline/Cable	□ Anchorage Area	☆ Beacon, General	■ -5' to -10'
..... Unconfirmed Pipeline/Cable	⊗ Obstruction Point	◆ Red Navigation Buoy	■ -10' to -20'
— Project Depth Contour	✈ Wrecks-Submerged	◆ Green Navigation Buoy	■ -20' to -30'
			■ -30' to -35'
			■ -35' to -40'
			■ -40' to 45'
			■ -45' and below

**NOTES:**

Horizontal Coordinate System:  
North American Datum of 1983 (NAD83), projected to the State Plane Coordinate System (SPCS), Louisiana South Zone. Distance units in U.S. Survey Feet.

Vertical Datum:  
Soundings are shown in feet and indicate depths below Low Water Reference Plane 2007 (NGVD).  
Distances on the Mississippi River, above and below Head of Passes are shown at 1 mile intervals.

The location of navigation aids are base on and provided by the U.S. Coast Guard and USACE crew.  
2010 Aerial Photography data source: NAIP, USDA-FSA-APFO Aerial Photography Field Office.

Reference is N.O.A. Navigation Chart No. 11370.

\*\* Shoalest Sounding per Quarter per Reach.

\*\*\* High frequency (200 kHz) survey data represents the first signal return at a sounding location and will include suspended solids, known as "fluff", if present. Low frequency (20 kHz) survey data normally penetrates through this "fluff" layer to depict elevations of consolidated bottom material. Low frequency accuracies may vary depending on channel conditions and fathometer settings.

LWRP: 2.1  
Gage Reading: BR:31.7D:22.2 USED:28.8 NGVD  
Sea Conditions: CALM  
Vessel Name: OB-189  
Survey Type: RECON  
Sounding Frequency\*\*\*: HIGH

0 500 1,000 1,500 2,000 2,500 Feet



**DISCLAIMER:** The data represented on this map is the result of data collected for a specific project. The data is not intended for use in any other project. The user is responsible for the accuracy, completeness, and reliability of the data. The user is responsible for the accuracy, completeness, and reliability of the data. The user is responsible for the accuracy, completeness, and reliability of the data. The user is responsible for the accuracy, completeness, and reliability of the data.

U.S. ARMY CORPS OF ENGINEERS NEW ORLEANS DISTRICT			
Submitted:	Surveyed By: DS/PS	Plotted By: AO	Checked By: ML
Recommended: Chief, Survey Section	Approved: Chief, Waterways Maintenance Section		

**MISSISSIPPI RIVER - B.R. TO GULF  
MEDORA RECON  
MR\_08\_MED\_20160414  
14 April 2016**

**Sheet Reference Number  
8 of 97**