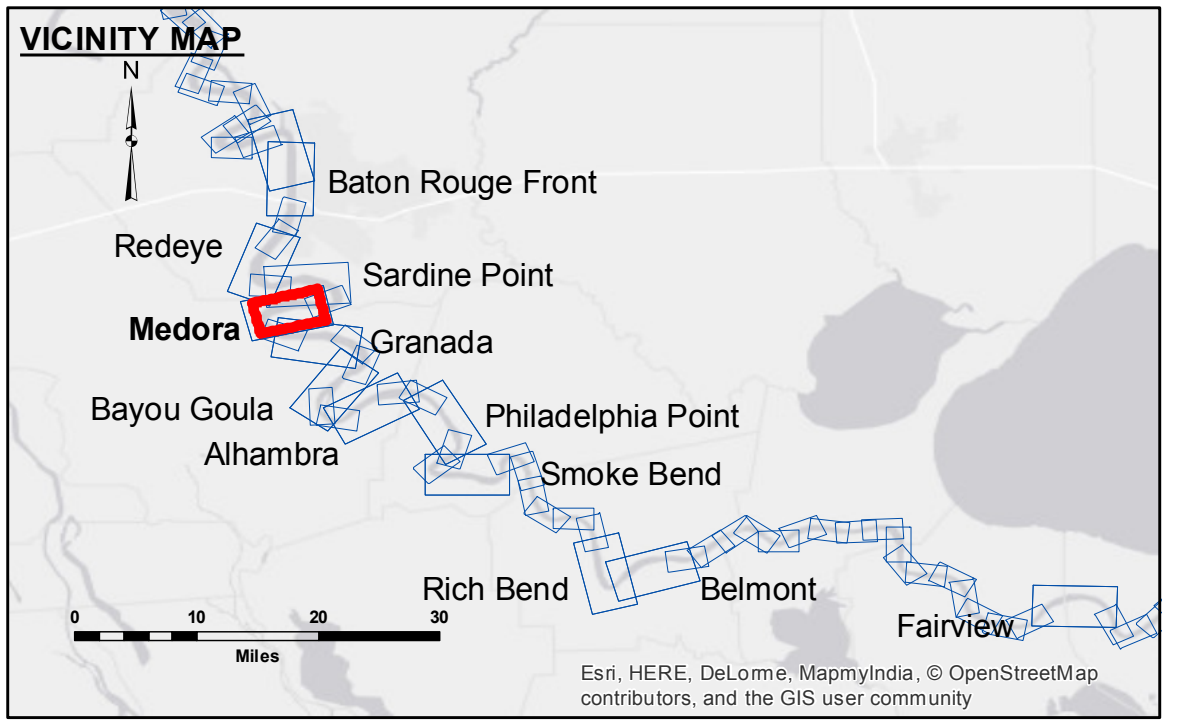


DISCLAIMER
 The information depicted on this map represents the results of a survey conducted by the U.S. Army Corps of Engineers. The user is responsible for the accuracy, completeness, reliability, usability, or suitability for any particular purpose of the information. The user is responsible for the accuracy, completeness, reliability, usability, or suitability for any particular purpose of the information. The user is responsible for the accuracy, completeness, reliability, usability, or suitability for any particular purpose of the information. The user is responsible for the accuracy, completeness, reliability, usability, or suitability for any particular purpose of the information.

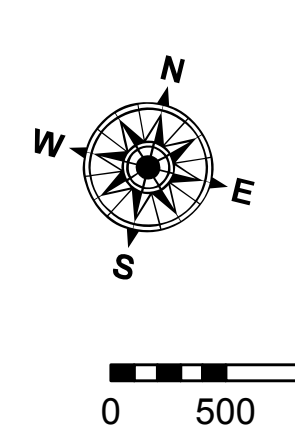
U.S. ARMY CORPS OF ENGINEERS NEW ORLEANS DISTRICT	
Submitted:	Checked By: AC
Recommended: Chief, Survey Section	Plotted By: BD
Approved: Chief, Waterways Maintenance Section	Surveyed By: SPS,JH

**MISSISSIPPI RIVER - B.R. TO GULF
 MEDORA RECON
 MR_08_MED_20160913
 13 September 2016**



LEGEND	
--- Federal Navigation Channel	● Cable Area
— Federal Navigation Center Line	■ Placement Area
— As-built Pipeline/Cable	□ Anchorage Area
..... Unconfirmed Pipeline/Cable	⊗ Obstruction Point
— Project Depth Contour	★ Wrecks-Submerged
□ Borrow Area	★ Beacon, General
● Shoalest Sounding**	◆ Red Navigation Buoy
◆ Green Navigation Buoy	

DIKE NO.	DIKE ELEVATION
1	-10 NGVD OR -12 LWRP
2	-4 NGVD OR -6 LWRP
3	-2 NGVD OR -0.1 LWRP



LWRP: 1.8
 Gage Reading: BR:16.24 D:9.48 USED:14.1 NGVD
 Sea Conditions: CALM
 Vessel Name: M/V LAFOURCHE
 Survey Type: CONDITION
 Sounding Frequency***: HIGH

NOTES:
 Horizontal Coordinate System: North American Datum of 1983 (NAD83), projected to the State Plane Coordinate System (SPCS), Louisiana South Zone. Distance units in U.S. Survey Feet.
 Vertical Datum: Soundings are shown in feet and indicate depths below Low Water Reference Plane 2007 (NGVD).
 Distances on the Mississippi River, above and below Head of Passes are shown at 1 mile intervals.
 The location of navigation aids are base on and provided by the U.S. Coast Guard and USACE crew.
 2010 Aerial Photography data source: NAIP, USDA-FSA-APFO Aerial Photography Field Office.
 Reference is N.O.A. Navigation Chart No. 11370.
 ** Shoalest Sounding per Quarter per Reach.
 *** High frequency (200 kHz) survey data represents the first signal return at a sounding location and will include suspended solids, known as "fluff", if present. Low frequency (20 kHz) survey data normally penetrates through this "fluff" layer to depict elevations of consolidated bottom material. Low frequency accuracies may vary depending on channel conditions and bathymeter settings.

**Sheet Reference Number
 8 of 97**

Revision Number:
 3.8-20150202