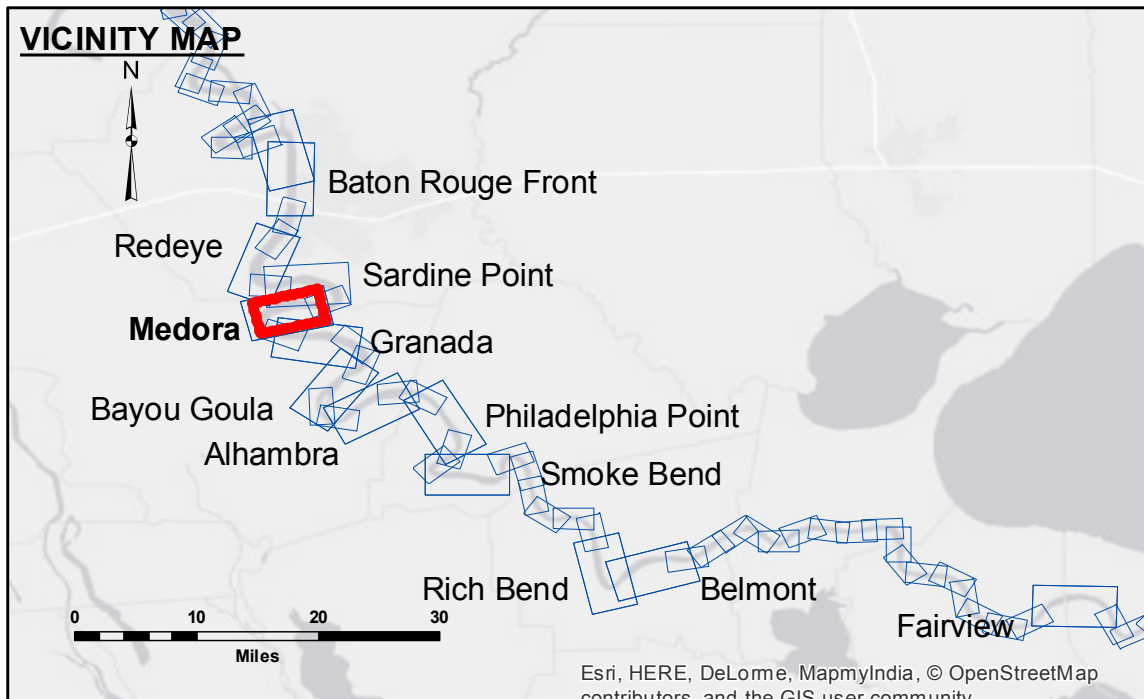


DIKE NO.	DIKE ELEVATION
1	-10 NGVD OR -12 LWRP
2	-4 NGVD OR -6 LWRP
3	-2 NGVD OR -0.1 LWRP



LEGEND

--- Federal Navigation Channel	○ Cable Area	□ Borrow Area	■ 0' and above
— Federal Navigation Center Line	▭ Placement Area	● Shoalest Sounding**	■ 0' to -5'
— As-built Pipeline/Cable	⊗ Anchorage Area	☆ Beacon, General	■ -5' to -10'
⋯ Unconfirmed Pipeline/Cable	⊗ Obstruction Point	◆ Red Navigation Buoy	■ -10' to -20'
— Project Depth Contour	✈ Wrecks-Submerged	◆ Green Navigation Buoy	■ -20' to -30'
			■ -30' to -35'
			■ -35' to -40'
			■ -40' to 45'
			■ -45' and below

NOTES:

Horizontal Coordinate System:
North American Datum of 1983 (NAD83), projected to the State Plane Coordinate System (SPCS), Louisiana South Zone. Distance units in U.S. Survey Feet.

Vertical Datum:
Soundings are shown in feet and indicate depths below Low Water Reference Plane 2007 (NGVD).
Distances on the Mississippi River, above and below Head of Passes are shown at 1 mile intervals.

The location of navigation aids are base on and provided by the U.S. Coast Guard and USACE crew.
2010 Aerial Photography data source: NAIP, USDA-FSA-APFO Aerial Photography Field Office.

Reference is N.O.A. Navigation Chart No. 11370.
** Shoalest Sounding per Quarter per Reach.

*** High frequency (200 kHz) survey data represents the first signal return at a sounding location and will include suspended solids, known as "fluff", if present. Low frequency (20 kHz) survey data normally penetrates through this "fluff" layer to depict elevations of consolidated bottom material. Low frequency accuracies may vary depending on channel conditions and bathymeter settings.

LWRP: 2.1
Gage Reading: BR:19.6 D:12.35 USED:17.40 NGVD
Sea Conditions: CALM
Vessel Name: OB-189
Survey Type: CONDITION
Sounding Frequency***: HIGH

0 500 1,000 1,500 2,000 2,500 Feet



DISCLAIMER: The United States Government furnishes these data and the recipient accepts and uses them with the express understanding that the Government makes no warranty, expressed or implied, as to the accuracy, completeness, reliability, usability or suitability for any particular purpose of the data. The user is responsible for the results obtained from the application of the data for other than its intended purpose. The information depicted on this map represents the results of a survey conducted on or after the date of the data collection. The user is responsible for the results of the application of the data for other than its intended purpose. The information depicted on this map represents the results of a survey conducted on or after the date of the data collection. The user is responsible for the results of the application of the data for other than its intended purpose.

U.S. ARMY CORPS OF ENGINEERS NEW ORLEANS DISTRICT	
Submitted:	RYLAND/SONNIER
Recommended:	Chet, Survey Section
Approved:	Chet, Waterways Maintenance Section
Surveyed By:	RYLAND/SONNIER
Plotted By:	BD
Checked By:	AC

MISSISSIPPI RIVER - B.R. TO GULF
MEDORA RECON
MR_08_MED_20170215
15 February 2017

Sheet Reference Number
8 of 97