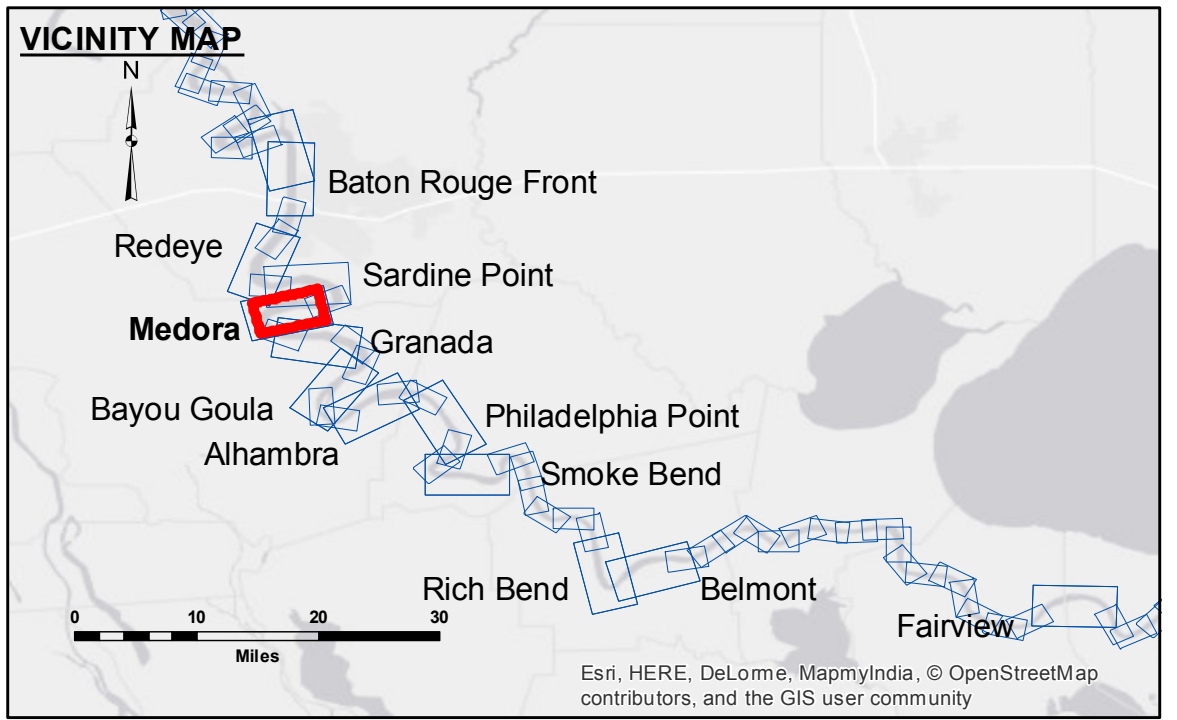


DISCLAIMER: The data represented on this map represents the results of a survey conducted by the U.S. Army Corps of Engineers. The data is not intended to be used for any purpose other than that for which it was collected. The user is responsible for the accuracy, completeness, and reliability of the data for any use other than that for which it was collected. The user is responsible for the accuracy, completeness, and reliability of the data for any use other than that for which it was collected. The user is responsible for the accuracy, completeness, and reliability of the data for any use other than that for which it was collected.

DIKE NO.	DIKE ELEVATION
1	-10 NGVD OR -12 LWRP
2	-4 NGVD OR -6 LWRP
3	-2 NGVD OR -0.1 LWRP



LEGEND

--- Federal Navigation Channel	○ Cable Area	□ Borrow Area	■ 0' and above
— Federal Navigation Center Line	□ Placement Area	● Shoalest Sounding**	■ 0' to -5'
— As-built Pipeline/Cable	□ Anchorage Area	★ Beacon, General	■ -5' to -10'
..... Unconfirmed Pipeline/Cable	⊗ Obstruction Point	◆ Red Navigation Buoy	■ -10' to -20'
— Project Depth Contour	⚓ Wrecks-Submerged	◆ Green Navigation Buoy	■ -20' to -30'
			■ -30' to -35'
			■ -35' to -40'
			■ -40' to -45'
			■ -45' and below

NOTES:

Horizontal Coordinate System:
North American Datum of 1983 (NAD83), projected to the State Plane Coordinate System (SPCS), Louisiana South Zone. Distance units in U.S. Survey Feet.

Vertical Datum:
Soundings are shown in feet and indicate depths below Low Water Reference Plane 2007 (NGVD).

Distances on the Mississippi River, above and below Head of Passes are shown at 1 mile intervals.

The location of navigation aids are base on and provided by the U.S. Coast Guard and USACE crew.

2010 Aerial Photography data source: NAIP, USDA-FSA-APFO Aerial Photography Field Office.

Reference is N.O.A. Navigation Chart No. 11370.

** Shoalest Sounding per Quarter per Reach.

*** High frequency (200 kHz) survey data represents the first signal return at a sounding location and will include suspended solids, known as "fluff", if present. Low frequency (20 kHz) survey data normally penetrates through this "fluff" layer to depict elevations of consolidated bottom material. Low frequency accuracies may vary depending on channel conditions and bathymeter settings.

LWRP: 2.1
Gage Reading: BR:26.1D:17.1 USED: 23.3 NGVD
Sea Conditions: LIGHT CHOP
Vessel Name: OB189
Survey Type: CONDITION
Sounding Frequency***: HIGH

Feet
0 500 1,000 1,500 2,000 2,500

U.S. ARMY CORPS OF ENGINEERS NEW ORLEANS DISTRICT		
Submitted:	Surveyed By: DS/OR	Plotted By: AO
Recommended: Chief, Survey Section	Checked By: AC	Checked By: AC
Approved: Chief, Waterways Maintenance Section		

**MISSISSIPPI RIVER - B.R. TO GULF
MEDORA RECON
MR_08_MED_20170706_CS
06 July 2017**

**Sheet Reference Number
8 of 97**

Revision Number:
3.13-20160811