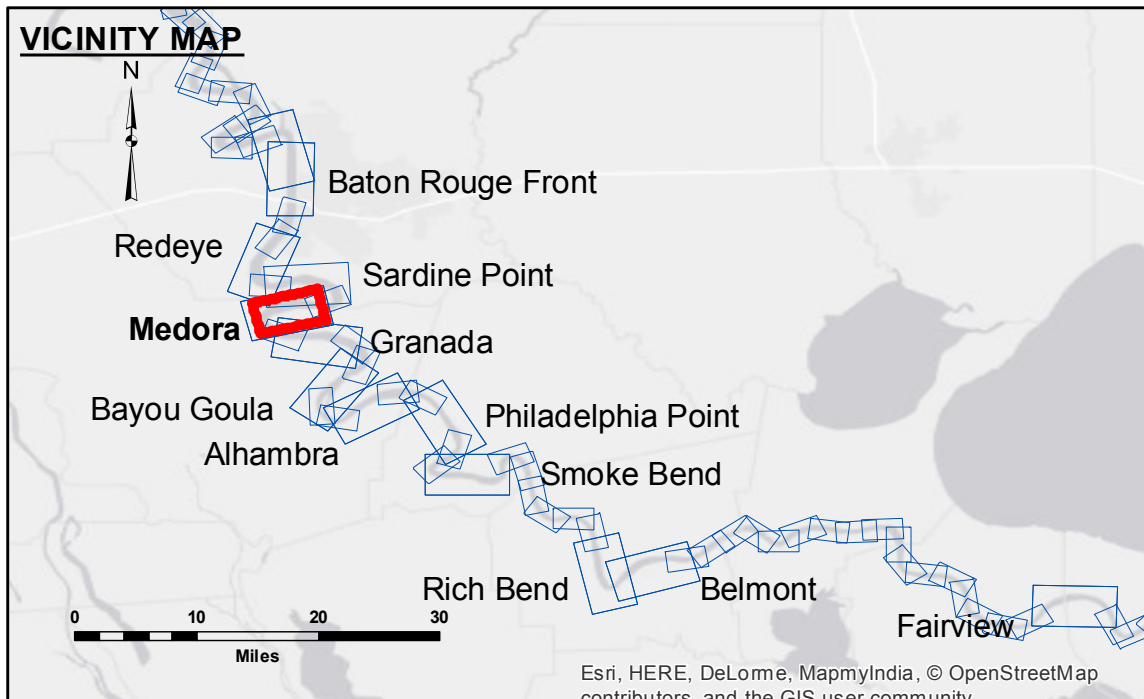


DIKE NO.	DIKE ELEVATION
1	-10 NGVD OR -12 LWRP
2	-4 NGVD OR -6.1 LWRP
3	-2 NGVD OR -0.1 LWRP



LEGEND

--- Federal Navigation Channel	○ Cable Area	□ Borrow Area	■ 0' and above
— Federal Navigation Center Line	□ Placement Area	● Shoalest Sounding**	■ 0' to -5'
— As-built Pipeline/Cable	□ Anchorage Area	☆ Beacon, General	■ -5' to -10'
..... Unconfirmed Pipeline/Cable	⊗ Obstruction Point	◆ Red Navigation Buoy	■ -10' to -20'
— Project Depth Contour	⚓ Wrecks-Submerged	◆ Green Navigation Buoy	■ -20' to -30'
			■ -30' to -35'
			■ -35' to -40'
			■ -40' to 45'
			■ -45' and below

NOTES:

Horizontal Coordinate System:
North American Datum of 1983 (NAD83), projected to the State Plane Coordinate System (SPCS), Louisiana South Zone. Distance units in U.S. Survey Feet.

Vertical Datum:
Soundings are shown in feet and indicate depths below Low Water Reference Plane 2007 (NGVD).
Distances on the Mississippi River, above and below Head of Passes are shown at 1 mile intervals.

The location of navigation aids are base on and provided by the U.S. Coast Guard and USACE crew.
2010 Aerial Photography data source: NAIP, USDA-FSA-APFO Aerial Photography Field Office.

Reference is N.O.A. Navigation Chart No. 11370.
** Shoalest Sounding per Quarter per Reach.
*** High frequency (200 kHz) survey data represents the first signal return at a sounding location and will include suspended solids, known as "fluff", if present. Low frequency (20 kHz) survey data normally penetrates through this "fluff" layer to depict elevations of consolidated bottom material. Low frequency accuracies may vary depending on channel conditions and bathymeter settings.

LWRP: 2.1
Gage Reading: BR:19.15 D:11.37 USED: 16.70 NGVD
Sea Conditions: CALM
Vessel Name: M/V BURROWOOD
Survey Type: CONDITION
Sounding Frequency***: HIGH

Feet
0 500 1,000 1,500 2,000 2,500



DISCLAIMER: The data represented on this map represents the results of a survey conducted by the U.S. Army Corps of Engineers. The data is provided for informational purposes only and is not intended for use in any other application. The user is responsible for the accuracy, completeness, reliability, usability or suitability for any particular purpose of the information. The user is advised to verify the accuracy, completeness, reliability, usability or suitability for any particular purpose of the information under no liability whatsoever to any person by reason of any use made thereof. These data belong to the Government. Therefore the Government provides these data as a public service and does not intend to transfer these data to others without also transferring this disclaimer. The information depicted on this map represents the results of a survey conducted by the U.S. Army Corps of Engineers. The data is provided for informational purposes only and is not intended for use in any other application. The user is responsible for the accuracy, completeness, reliability, usability or suitability for any particular purpose of the information. The user is advised to verify the accuracy, completeness, reliability, usability or suitability for any particular purpose of the information under no liability whatsoever to any person by reason of any use made thereof. These data belong to the Government. Therefore the Government provides these data as a public service and does not intend to transfer these data to others without also transferring this disclaimer. The information depicted on this map represents the results of a survey conducted by the U.S. Army Corps of Engineers. The data is provided for informational purposes only and is not intended for use in any other application. The user is responsible for the accuracy, completeness, reliability, usability or suitability for any particular purpose of the information. The user is advised to verify the accuracy, completeness, reliability, usability or suitability for any particular purpose of the information under no liability whatsoever to any person by reason of any use made thereof. These data belong to the Government. Therefore the Government provides these data as a public service and does not intend to transfer these data to others without also transferring this disclaimer.

U.S. ARMY CORPS OF ENGINEERS NEW ORLEANS DISTRICT	
Submitted:	RYLAND/ADAMS
Recommended:	Checked By: BD
Approved:	Checked By: AC

**MISSISSIPPI RIVER - B.R. TO GULF
MEDORA RECON
MR_08_MED_20170725_CS
25 July 2017**

**Sheet
Reference
Number
8 of 97**