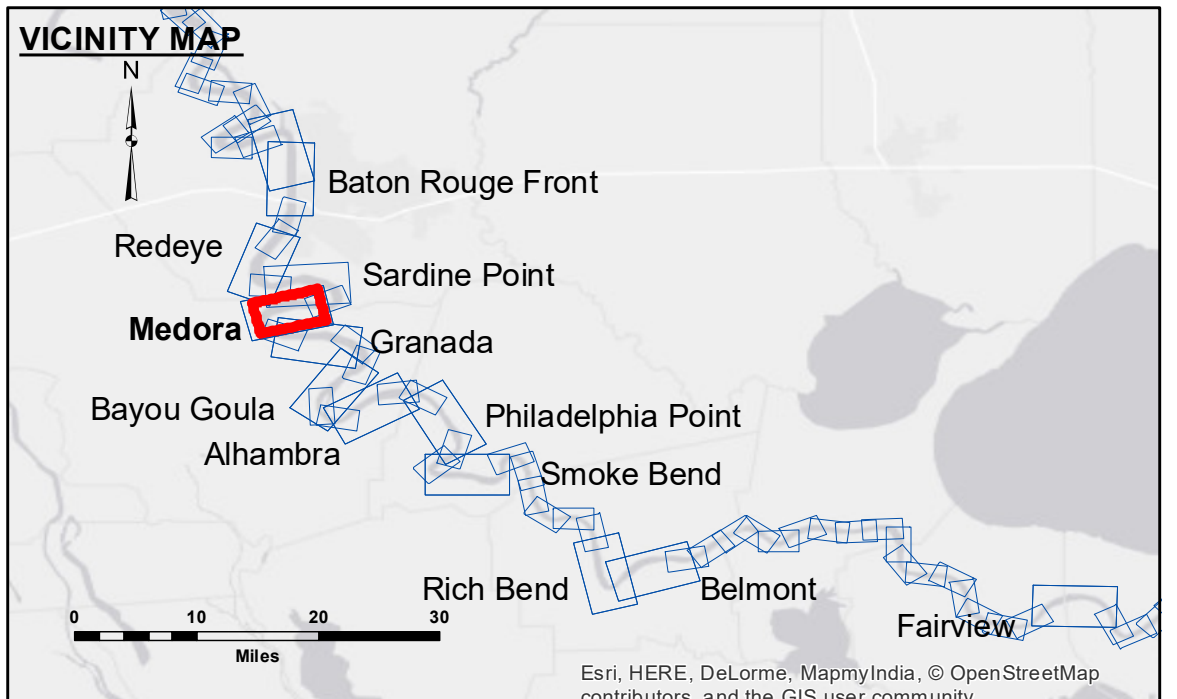


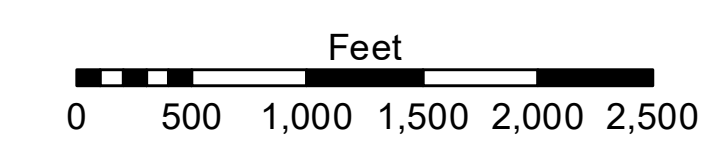
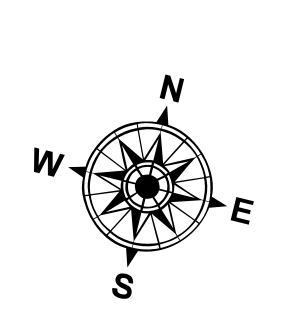
DISCLAIMER: The data represents the results of data collection for a specific project. The data is not intended for use in any other project. The user is responsible for the accuracy, reliability, and availability of the data for their intended purpose. The user is responsible for the accuracy, reliability, and availability of the data for their intended purpose. The user is responsible for the accuracy, reliability, and availability of the data for their intended purpose.

U.S. ARMY CORPS OF ENGINEERS NEW ORLEANS DISTRICT		
Submitted:	Plotted By:	Checked By:
Recommended:	BD	AC
Approved:	Chief, Survey Section	Chief, Waterways Maintenance Section

**MISSISSIPPI RIVER - B. R. TO GULF
MEDORA RECON
MR_08_MED_20170802_CS
02 August 2017**



LEGEND	
--- Federal Navigation Channel	● Cable Area
— Federal Navigation Center Line	■ Placement Area
— As-built Pipeline/Cable	□ Anchorage Area
..... Unconfirmed Pipeline/Cable	⊗ Obstruction Point
— Project Depth Contour	★ Wrecks-Submerged
□ Borrow Area	★ Beacon, General
● Shoalest Sounding**	◆ Red Navigation Buoy
◆ Green Navigation Buoy	



LWRP: 2.1
Gage Reading: BR:15.4 D:9.0 USED:13.4 NGVD
Sea Conditions: CALM
Vessel Name: M/V LAFOURCHE
Survey Type: CONDITION
Sounding Frequency***: HIGH

NOTES:
Horizontal Coordinate System: North American Datum of 1983 (NAD83), projected to the State Plane Coordinate System (SPCS), Louisiana South Zone. Distance units in U.S. Survey Feet.
Vertical Datum: Soundings are shown in feet and indicate depths below Low Water Reference Plane 2007 (NGVD).
Distances on the Mississippi River, above and below Head of Passes are shown at 1 mile intervals.
The location of navigation aids are based on and provided by the U.S. Coast Guard and USACE crew.
2010 Aerial Photography data source: NAIP, USDA-FSA-APFO Aerial Photography Field Office.
Reference is N.O.A.A. Navigation Chart No. 11370.
** Shoalest Sounding per Quarter per Reach.
*** High frequency (200 kHz) survey data represents the first signal return at a sounding location and will include suspended solids, known as "fluff", if present. Low frequency (20 kHz) survey data normally penetrates through this "fluff" layer to depict elevations of consolidated bottom material. Low frequency accuracies may vary depending on channel conditions and bathymeter settings.

**Sheet Reference Number
8 of 97**