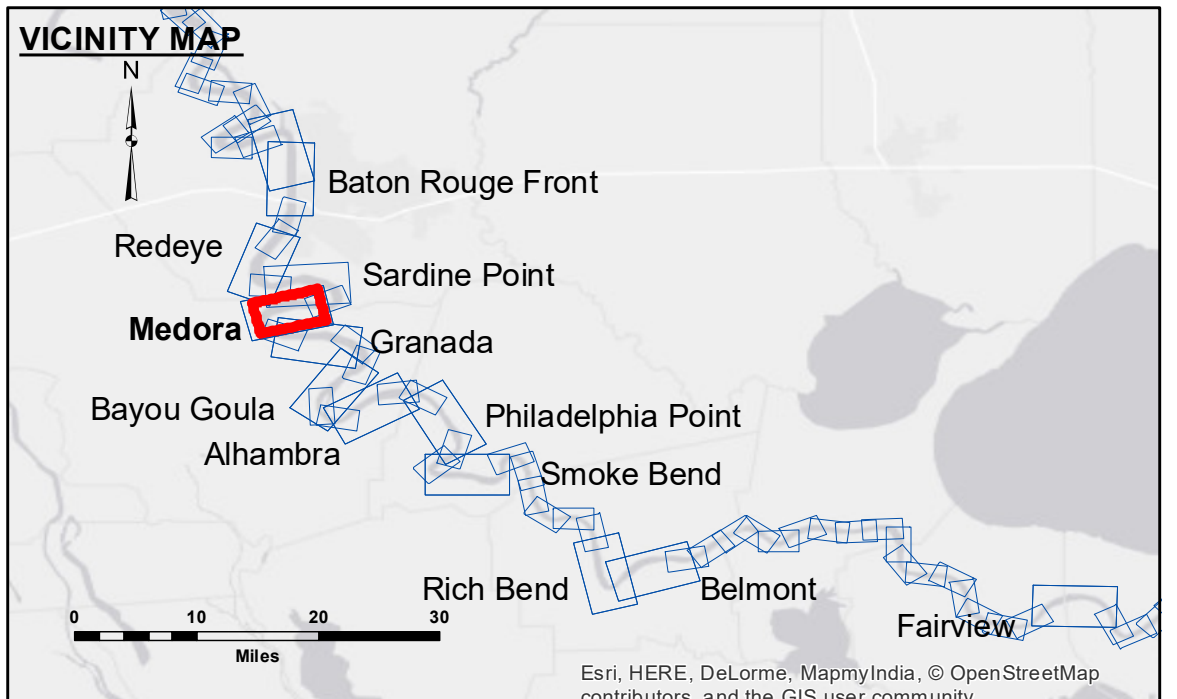


**DISCLAIMER:** The United States Government furnishes these data and the recipient accepts and uses them with the express understanding that the Government makes no warranty, expressed or implied, concerning the accuracy, completeness, reliability, usability or suitability for any particular purpose of the information. The user is responsible for the results. The application of the data for other than its intended purpose is at the user's risk. The user may not transfer these data to others without obtaining the permission of the Army Corps of Engineers. The user is responsible for changes in the hydrographical conditions which develop after the date of the survey. The information depicted on this map represents the results of a survey conducted on or about the date shown. The Corps of Engineers does not warrant the accuracy of the information to represent the general condition existing at that time.

U.S. ARMY CORPS OF ENGINEERS NEW ORLEANS DISTRICT		
Submitted:	Reviewed:	Checked By:
DS/PS	Chief Survey Section	AC
Plotted By:	Checked By:	
BD	AC	

**MISSISSIPPI RIVER - B.R. TO GULF  
MEDORA RECON  
MR\_08\_MED\_20170809\_CS  
09 August 2017**



LEGEND		DIKE NO. DIKE ELEVATION	
--- Federal Navigation Channel	○ Cable Area	1	-10 NGVD OR -12 LWRP
— Federal Navigation Center Line	□ Placement Area	2	-4 NGVD OR -4.1 LWRP
— As-built Pipeline/Cable	□ Anchorage Area	3	2 NGVD OR -0.1 LWRP
..... Unconfirmed Pipeline/Cable	⊗ Obstruction Point		
— Project Depth Contour	★ Wrecks-Submerged		
	□ Borrow Area		
	● Shoalest Sounding**		
	★ Beacon, General		
	◆ Red Navigation Buoy		
	◆ Green Navigation Buoy		

**NOTES:**

Horizontal Coordinate System:  
North American Datum of 1983 (NAD83), projected to the State Plane Coordinate System (SPCS), Louisiana South Zone. Distance units in U.S. Survey Feet.

Vertical Datum:  
Soundings are shown in feet and indicate depths below Low Water Reference Plane 2007 (NGVD).

Distances on the Mississippi River, above and below Head of Passes are shown at 1 mile intervals.

The location of navigation aids are based on and provided by the U.S. Coast Guard and USACE crew.

2010 Aerial Photography data source: NAIP, USDA-FSA-APFO Aerial Photography Field Office.

Reference is N.O.A.A. Navigation Chart No. 11370.

\*\* Shoalest Sounding per Quarter per Reach.

\*\*\* High frequency (200 kHz) survey data represents the first signal return at a sounding location and will include suspended solids, known as "fluff", if present. Low frequency (20 kHz) survey data normally penetrates through this "fluff" layer to depict elevations of consolidated bottom material. Low frequency accuracies may vary depending on channel conditions and bathymeter settings.

LWRP: 2.1  
Gage Reading: BR:17.8 D:10.4 USED:15.5 NGVD  
Sea Conditions: CALM  
Vessel Name: M/V LAFOURCHE  
Survey Type: CONDITION  
Sounding Frequency\*\*\*: HIGH

0 500 1,000 1,500 2,000 2,500 Feet

**Sheet Reference Number  
8 of 97**