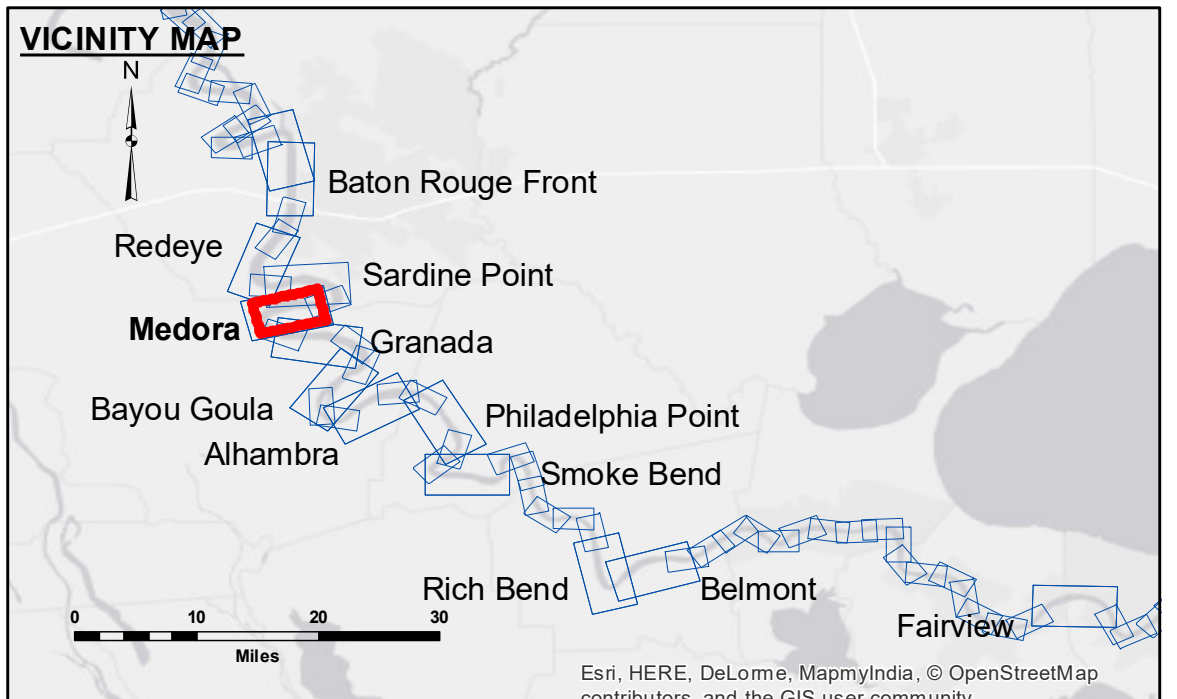




DISCLAIMER: The data represented on this map represents the results of a survey conducted by the U.S. Army Corps of Engineers. The data is not intended to be used for any purpose other than that for which it was collected. The user is responsible for the accuracy, completeness, and reliability of the data for any purpose other than that for which it was collected. The user is responsible for the accuracy, completeness, and reliability of the data for any purpose other than that for which it was collected. The user is responsible for the accuracy, completeness, and reliability of the data for any purpose other than that for which it was collected.

Submitted:	Checked By:
Recommended:	Checked By:
Approved:	Checked By:

MISSISSIPPI RIVER - B.R. TO GULF
MEDORA RECON
MR_08_MED_20171108_CS
08 November 2017



LEGEND	
--- Federal Navigation Channel	0' and above
— Federal Navigation Center Line	0' to -5'
— As-built Pipeline/Cable	-5' to -10'
..... Unconfirmed Pipeline/Cable	-10' to -20'
— Project Depth Contour	-20' to -30'
○ Cable Area	-30' to -35'
□ Placement Area	-35' to -40'
□ Anchorage Area	-40' to 45'
⊗ Obstruction Point	-45' and below
⊗ Wrecks-Submerged	
□ Borrow Area	
● Shoalest Sounding**	
☆ Beacon, General	
◆ Red Navigation Buoy	
◆ Green Navigation Buoy	

NOTES:

Horizontal Coordinate System:
 North American Datum of 1983 (NAD83), projected to the State Plane Coordinate System (SPCS), Louisiana South Zone. Distance units in U.S. Survey Feet.

Vertical Datum:
 Soundings are shown in feet and indicate depths below Low Water Reference Plane 2007 (NGVD).

Distances on the Mississippi River, above and below Head of Passes are shown at 1 mile intervals.

The location of navigation aids are base on and provided by the U.S. Coast Guard and USACE crew.
 2010 Aerial Photography data source: NAIP, USDA-FSA-APFO Aerial Photography Field Office.

Reference is N.O.A. Navigation Chart No. 11370.

** Shoalest Sounding per Quarter per Reach.

*** High frequency (200 kHz) survey data represents the first signal return at a sounding location and will include suspended solids, known as "fluff", if present. Low frequency (20 kHz) survey data normally penetrates through this "fluff" layer to depict elevations of consolidated bottom material. Low frequency accuracies may vary depending on channel conditions and fathometer settings.

LWRP: 2.1
 Gage Reading: BR:12.71 D:7.40 USED:11.1 NGVD
 Sea Conditions: CALM
 Vessel Name: M/V LAFORCHE
 Survey Type: CONDITION
 Sounding Frequency***: HIGH

Feet
 0 500 1,000 1,500 2,000 2,500

Sheet Reference Number
8 of 97