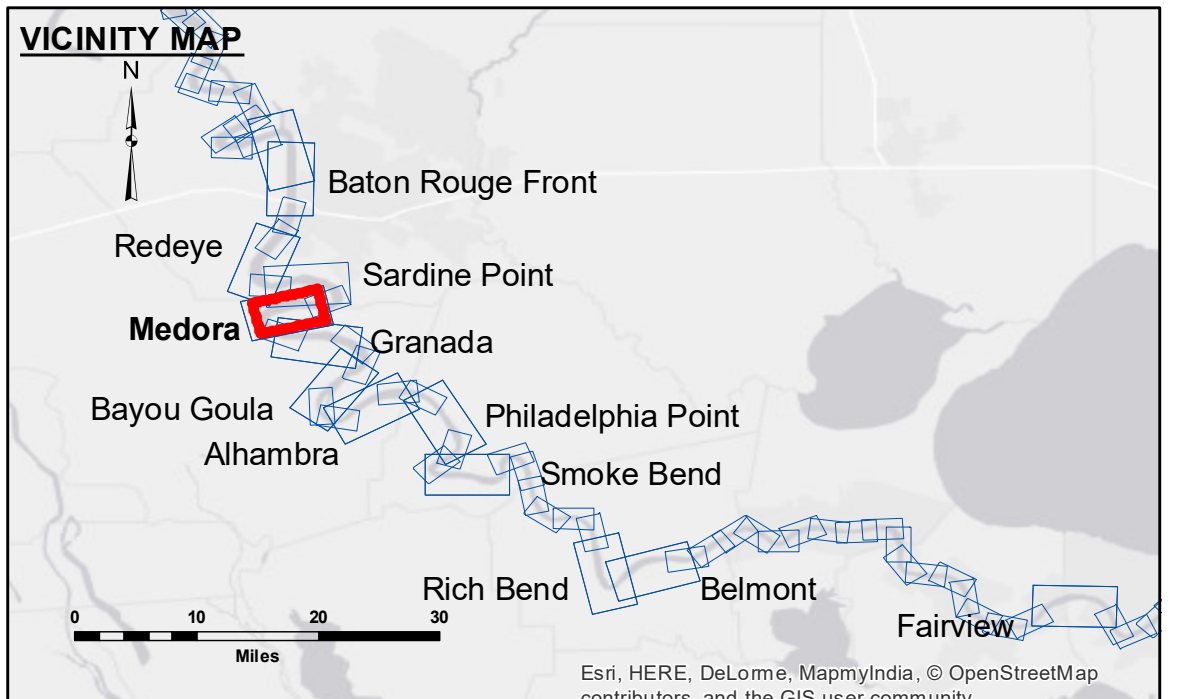


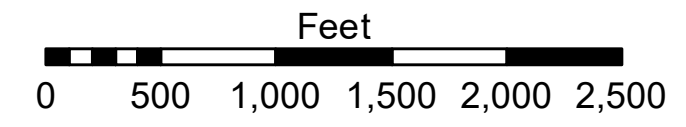
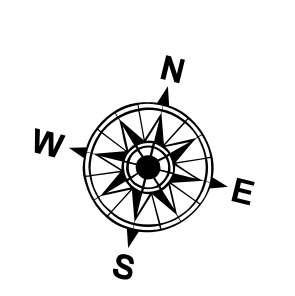
**DISCLAIMER:** The data represents the results of data collection processing for a specific US Army Corps of Engineers project. The data is only valid for its intended use, and accuracy is not guaranteed. The user is responsible for the results. The application of the data for other than its intended purpose is not recommended. Hydrographic survey data is subject to change due to several factors including but not limited to dredging, sedimentation, and changes in bathymetry. The Corps of Engineers does not assume any liability for changes in the hydrographic conditions when developed after the date of the survey. The information depicted on this map represents the results of a survey conducted on the date indicated. The Corps of Engineers is not responsible for the general condition existing at that time.

U.S. ARMY CORPS OF ENGINEERS NEW ORLEANS DISTRICT		
Submitted:	Checked By:	AC
Recommended:	Plotted By:	BD
Approved:	Checked By:	AC

**MISSISSIPPI RIVER - B.R. TO GULF  
MEDORA RECON  
MR\_08\_MED\_20180206\_CS  
06 February 2018**



LEGEND		DIKE ELEVATION	
--- Federal Navigation Channel	○ Cable Area	1 -10 NGVD	0' and above
— Federal Navigation Center Line	□ Placement Area	OR -12 LWRP	0' to -5'
— As-built Pipeline/Cable	□ Anchorage Area	2 -4 NGVD	-5' to -10'
..... Unconfirmed Pipeline/Cable	⊗ Obstruction Point	OR -4.1 LWRP	-10' to -20'
— Project Depth Contour	★ Wrecks-Submerged	3 -2 NGVD	-20' to -30'
	★ Beacon, General	OR -0.1 LWRP	-30' to -35'
	◆ Red Navigation Buoy		-35' to -40'
	◆ Green Navigation Buoy		-40' to 45'
			-45' and below



LWRP: 2.1  
Gage Reading: BR:16.29 D:9.20 USED:14.1 NGVD  
Sea Conditions: CALM  
Vessel Name: M/V LAFOURCHE  
Survey Type: CONDITION  
Sounding Frequency\*\*\*: HIGH

**NOTES:**  
Horizontal Coordinate System: North American Datum of 1983 (NAD83), projected to the State Plane Coordinate System (SPCS), Louisiana South Zone. Distance units in U.S. Survey Feet.  
Vertical Datum: Soundings are shown in feet and indicate depths below Low Water Reference Plane 2007 (NGVD).  
Distances on the Mississippi River, above and below Head of Passes are shown at 1 mile intervals.  
The location of navigation aids are base on and provided by the U.S. Coast Guard and USACE crew.  
2010 Aerial Photography data source: NAIP, USDA-FSA-APFO Aerial Photography Field Office.  
Reference is N.O.A. Navigation Chart No. 11370.  
\*\*\* Shoalest Sounding per Quarter per Reach.  
\*\*\* High frequency (200 kHz) survey data represents the first signal return at a sounding location and will include suspended solids, known as "fluff", if present. Low frequency (20 kHz) survey data normally penetrates through this "fluff" layer to depict elevations of consolidated bottom material. Low frequency accuracies may vary depending on channel conditions and fathometer settings.

**Sheet Reference Number  
8 of 97**