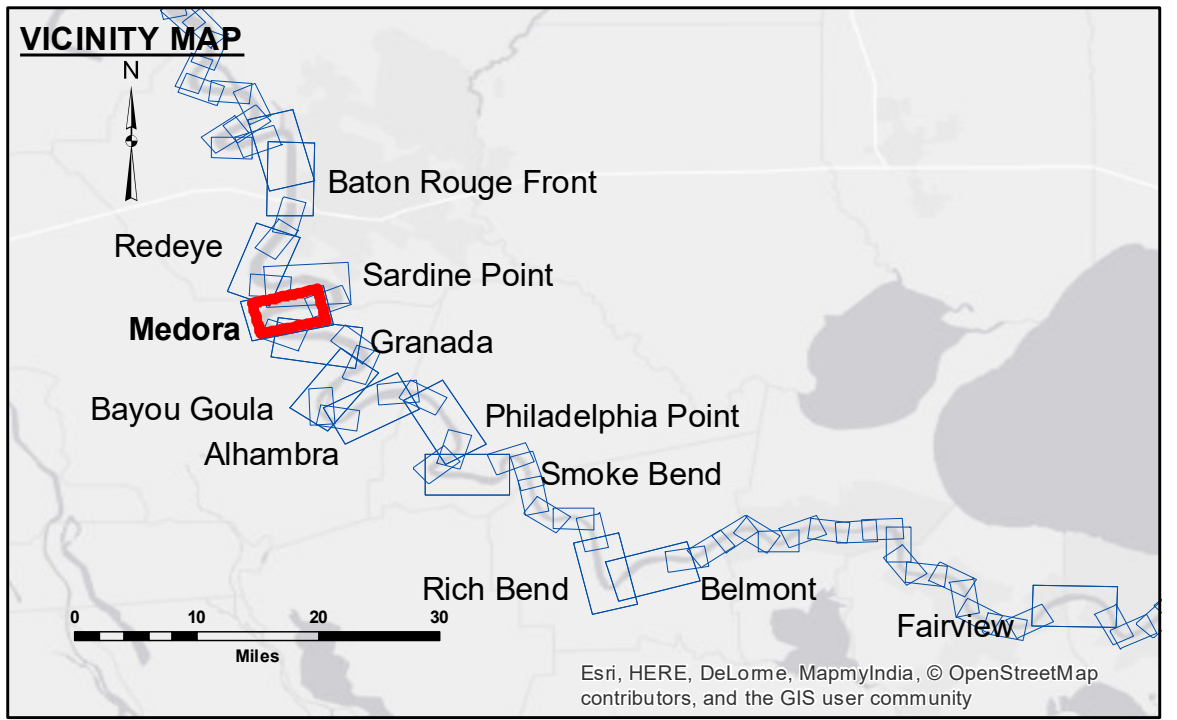


DISCLAIMER: The data represented on this map represents the results of a survey conducted by the U.S. Army Corps of Engineers. The data is provided for informational purposes only and is not intended for use in any other application. The user is responsible for the accuracy, completeness, and reliability of the data. The user is advised to verify the data for their specific application. The data is provided as-is and the Corps of Engineers makes no warranty, express or implied, for the accuracy, completeness, or reliability of the data. The user is responsible for the accuracy, completeness, and reliability of the data. The user is advised to verify the data for their specific application. The data is provided as-is and the Corps of Engineers makes no warranty, express or implied, for the accuracy, completeness, or reliability of the data. The user is responsible for the accuracy, completeness, and reliability of the data. The user is advised to verify the data for their specific application.

Submitted:	Checked By:	AC
Recommended:	Plotted By:	BD
Approved:	Surveyed By:	DS/PS

U.S. ARMY CORPS OF ENGINEERS
NEW ORLEANS DISTRICT

**MISSISSIPPI RIVER - B.R. TO GULF
MEDORA RECON
MR_08_MED_20180522_CS
22 May 2018**



LEGEND		Color Legend	
--- Federal Navigation Channel	○ Cable Area	Green	0' and above
— Federal Navigation Center Line	□ Placement Area	Yellow	0' to -5'
— As-built Pipeline/Cable	□ Anchorage Area	Orange	-5' to -10'
..... Unconfirmed Pipeline/Cable	⊗ Obstruction Point	Light Blue	-10' to -20'
— Project Depth Contour	★ Beacon, General	Blue	-20' to -30'
	◆ Red Navigation Buoy	Dark Blue	-30' to -35'
	◆ Green Navigation Buoy	Pink	-35' to -40'
		Light Purple	-40' to 45'
		White	-45' and below
	□ Borrow Area		
	● Shoalest Sounding**		
	⊗ Wrecks-Submerged		

NOTES:

Horizontal Coordinate System:
North American Datum of 1983 (NAD83), projected to the State Plane Coordinate System (SPCS), Louisiana South Zone. Distance units in U.S. Survey Feet.

Vertical Datum:
Soundings are shown in feet and indicate depths below Low Water Reference Plane 2007 (NGVD).

Distances on the Mississippi River, above and below Head of Passes are shown at 1 mile intervals.

The location of navigation aids are base on and provided by the U.S. Coast Guard and USACE crew.

2010 Aerial Photography data source: NAIP, USDA-FSA-APFO Aerial Photography Field Office.

Reference is N.O.A. Navigation Chart No. 11370.

** Shoalest Sounding per Quarter per Reach.

*** High frequency (200 kHz) survey data represents the first signal return at a sounding location and will include suspended solids, known as "fluff", if present. Low frequency (20 kHz) survey data normally penetrates through this "fluff" layer to depict elevations of consolidated bottom material. Low frequency accuracies may vary depending on channel conditions and fathometer settings.

LWRP: 2.1
Gage Reading: BR:28.43 D:19.22 USED:25.6 NGVD
Sea Conditions: CALM
Vessel Name: M/V LAFOURCHE
Survey Type: CONDITION
Sounding Frequency***: HIGH

Feet
0 500 1,000 1,500 2,000 2,500

**Sheet Reference Number
8 of 97**

Revision Number:
3.12-20160811