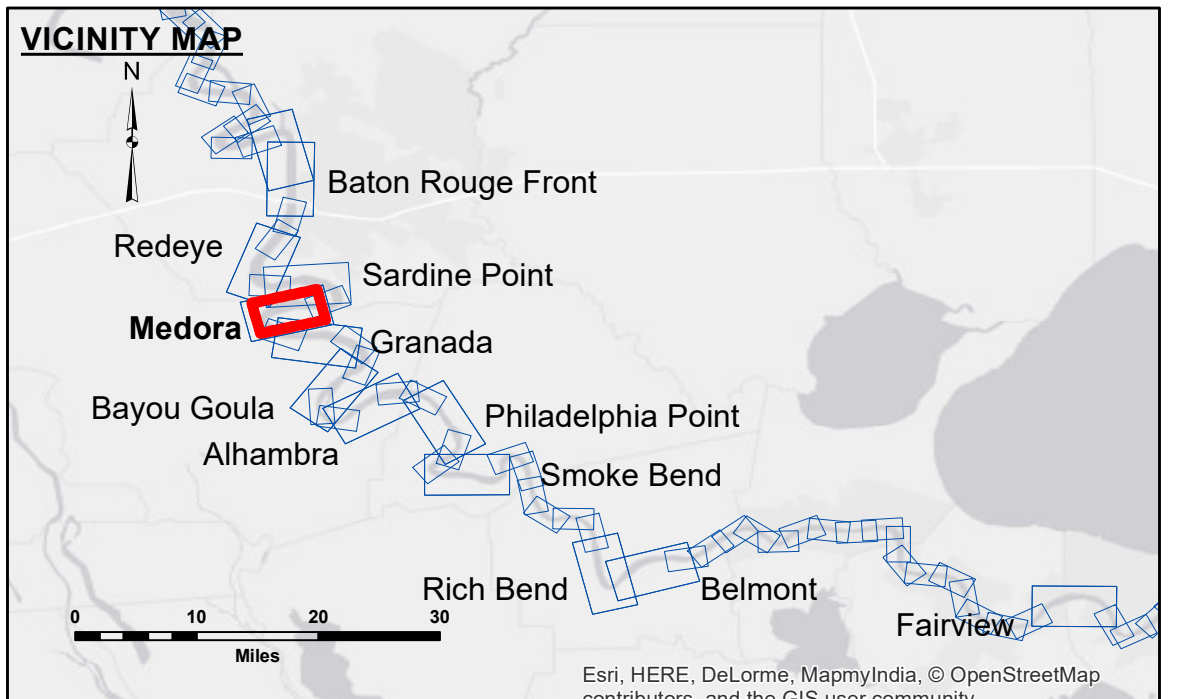


DISCLAIMER
 The information depicted on this map represents the results of a survey conducted by the United States Army Corps of Engineers. The user is responsible for the accuracy, completeness, and reliability of the data for its intended use. The user is responsible for the accuracy, completeness, and reliability of the data for its intended use. The user is responsible for the accuracy, completeness, and reliability of the data for its intended use.

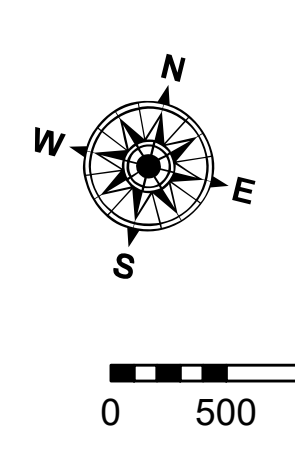
| | | | |
|--------------|-----------------------|--------------------------------------|-------------|
| Submitted: | Surveyed By: | Plotted By: | Checked By: |
| Recommended: | DS/SR | BD | AC |
| Approved: | Chief, Survey Section | Chief, Waterways Maintenance Section | |

**MISSISSIPPI RIVER - B.R. TO GULF
 MEDORA RECON
 MR_08_MED_20180625_CS
 25 June 2018**



LEGEND

| | | | |
|----------------------------------|---------------------|-------------------------|------------------|
| --- Federal Navigation Channel | ○ Cable Area | □ Borrow Area | ■ 0' and above |
| — Federal Navigation Center Line | □ Placement Area | ● Shoalest Sounding** | ■ 0' to -5' |
| — As-built Pipeline/Cable | □ Anchorage Area | ☆ Beacon, General | ■ -5' to -10' |
| Unconfirmed Pipeline/Cable | ⊗ Obstruction Point | ◆ Red Navigation Buoy | ■ -10' to -20' |
| — Project Depth Contour | ✶ Wrecks-Submerged | ◆ Green Navigation Buoy | ■ -20' to -30' |
| | | | ■ -30' to -35' |
| | | | ■ -35' to -40' |
| | | | ■ -40' to 45' |
| | | | ■ -45' and below |



LWRP: 2.1
 Gage Reading: BR:18.47 D:10.77 USED:16.10 NGVD
 Sea Conditions: CALM
 Vessel Name: OB-189
 Survey Type: CONDITION
 Sounding Frequency***: HIGH

NOTES:
 Horizontal Coordinate System: North American Datum of 1983 (NAD83), projected to the State Plane Coordinate System (SPCS), Louisiana South Zone. Distance units in U.S. Survey Feet.
 Vertical Datum: Soundings are shown in feet and indicate depths below Low Water Reference Plane 2007 (NGVD).
 Distances on the Mississippi River, above and below Head of Passes are shown at 1 mile intervals.
 The location of navigation aids are based on and provided by the U.S. Coast Guard and USACE crew.
 2010 Aerial Photography data source: NAIP, USDA-FSA-APFO Aerial Photography Field Office.
 Reference is N.O.A. Navigation Chart No. 11370.
 ** Shoalest Sounding per Quarter per Reach.
 *** High frequency (200 kHz) survey data represents the first signal return at a sounding location and will include suspended solids, known as "fluff", if present. Low frequency (20 kHz) survey data normally penetrates through this "fluff" layer to depict elevations of consolidated bottom material. Low frequency accuracies may vary depending on channel conditions and bathymeter settings.

**Sheet Reference Number
 8 of 97**