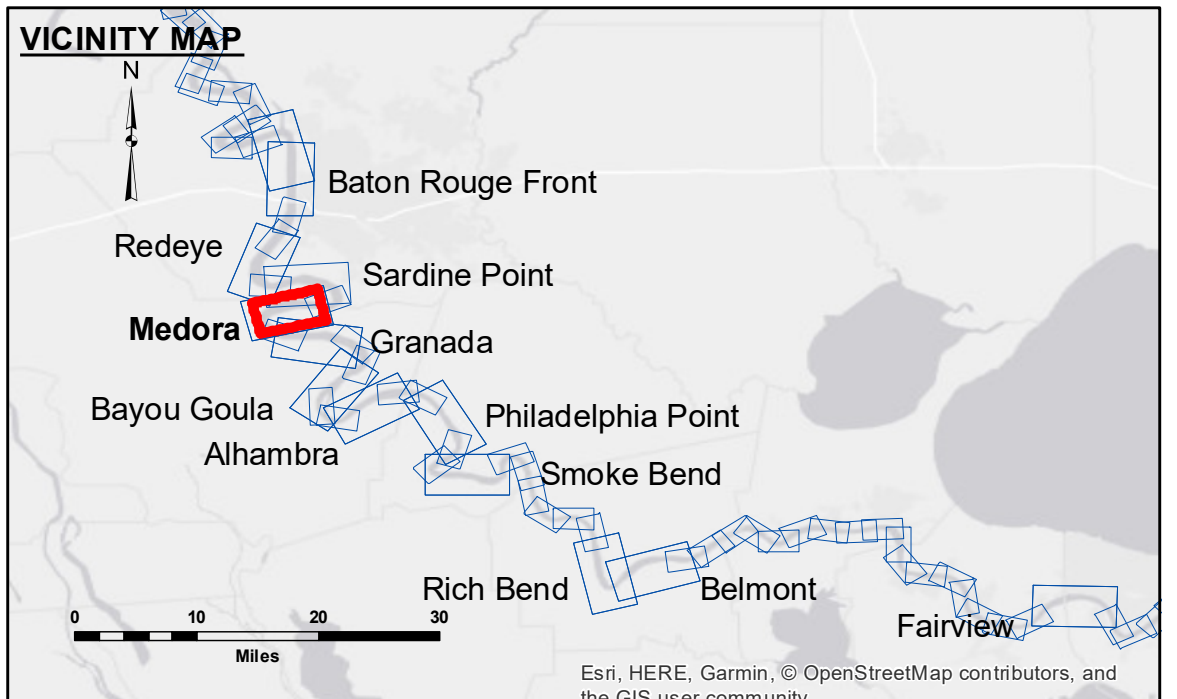


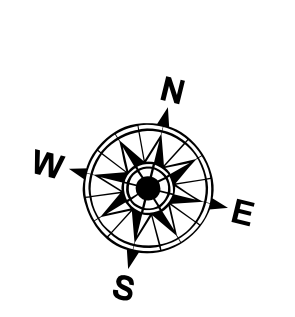
DISCLAIMER: The data represents the results of data collection processing for a specific US Army Corps of Engineers project. The data is only valid for its intended use, control, time and accuracy specifications. The user is responsible for the results. The user's application of the data for other than its intended purpose is not warranted. Hydrographic survey data is subject to change due to several factors including but not limited to dredging, sedimentation, and channel migration. The user should verify the data for their specific application. The information depicted on this map represents the results of a survey conducted on the date indicated. The user is responsible for the results of a survey conducted on the date indicated. The user is responsible for the results of a survey conducted on the date indicated.

DIKE NO.	DIKE ELEVATION
1	-10 NGVD OR -12.1 LWRP
2	-4 NGVD OR -6.1 LWRP
3	2 NGVD OR -0.1 LWRP

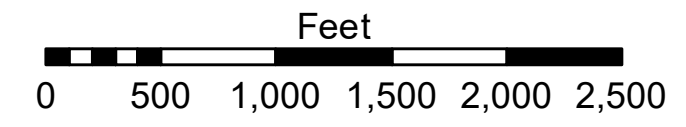


LEGEND

- Federal Navigation Channel
- Federal Navigation Center Line
- As-built Pipeline/Cable
- Unconfirmed Pipeline/Cable
- Project Depth Contour
- Cable Area
- Placement Area
- Anchorage Area
- ⊗ Obstruction Point
- ✈ Wrecks-Submerged
- Borrow Area
- Shoalest Sounding**
- ★ Beacon, General
- ◆ Red Navigation Buoy
- ◆ Green Navigation Buoy
- 0' and above
- 0' to -5'
- 5' to -10'
- 10' to -20'
- 20' to -30'
- 30' to -35'
- 35' to -40'
- 40' to -45'
- 45' and below



LWRP: 2.1
 Gage Reading: BR:22.4D:14.0 USED:19.8 NGVD
 Sea Conditions: SMOOTH
 Vessel Name: OB189
 Survey Type: CS
 Sounding Frequency***: HIGH



NOTES:

Horizontal Coordinate System:
 North American Datum of 1983 (NAD83), projected to the State Plane Coordinate System (SPCS), Louisiana South Zone. Distance units in U.S. Survey Feet.

Vertical Datum:
 Soundings are shown in feet and indicate depths below Low Water Reference Plane 2007 (NGVD).

Distances on the Mississippi River, above and below Head of Passes are shown at 1 mile intervals.

The location of navigation aids are base on and provided by the U.S. Coast Guard and USACE crew.

2015 Aerial Photography data source: NAIP, USDA-FSA-APFO Aerial Photography Field Office.

Reference is N.O.A. Navigation Chart No. 11370.

** Shoalest Sounding per Quarter per Reach.

*** High frequency (200 kHz) survey data represents the first signal return at a sounding location and will include suspended solids, known as "fluff", if present. Low frequency (20 kHz) survey data normally penetrates through this "fluff" layer to depict elevations of consolidated bottom material. Low frequency accuracies may vary depending on channel conditions and fathometer settings.

U.S. ARMY CORPS OF ENGINEERS
 NEW ORLEANS DISTRICT

Submitted:	Surveyed By: DS/JH
Recommended:	Plotted By: AO
Approved:	Checked By: AC

**MISSISSIPPI RIVER - B.R. TO GULF
 MEDORA RECON
 MR_08_MED_20180716_CS
 16 July 2018**

**Sheet Reference Number
 8 of 97**