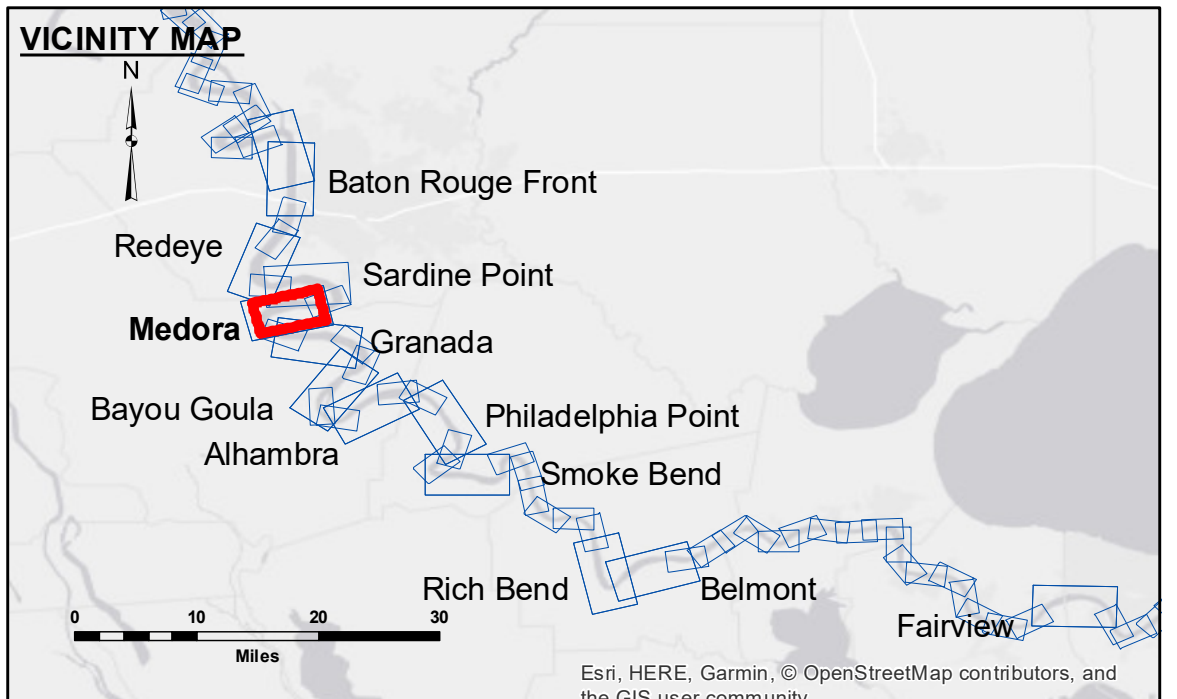


DISCLAIMER: The data represented on this map represents the results of a survey conducted by the U.S. Army Corps of Engineers. The data is provided for informational purposes only and is not intended for use in any legal proceeding. The user is responsible for the accuracy, completeness, and reliability of the data. The user is advised to verify the data for their intended use. The data is provided as-is and without warranty. The user is advised to consult the appropriate technical manual for more information. The data is provided for informational purposes only and is not intended for use in any legal proceeding. The user is responsible for the accuracy, completeness, and reliability of the data. The user is advised to verify the data for their intended use. The data is provided as-is and without warranty. The user is advised to consult the appropriate technical manual for more information.

U.S. ARMY CORPS OF ENGINEERS NEW ORLEANS DISTRICT	
Submitted:	RYLAND/SONNIER
Recommended:	Checked By: AO
Approved:	Checked By: AC

**MISSISSIPPI RIVER - B.R. TO GULF
MEDORA RECON
MR_08_MED_20180830_CS
30 August 2018**



LEGEND

- Federal Navigation Channel
- Federal Navigation Center Line
- As-built Pipeline/Cable
- Unconfirmed Pipeline/Cable
- Project Depth Contour
- Cable Area
- Placement Area
- Anchorage Area
- ⊗ Obstruction Point
- ✈ Wrecks-Submerged
- Borrow Area
- Shoalest Sounding**
- ☆ Beacon, General
- ◆ Red Navigation Buoy
- ◆ Green Navigation Buoy
- 0' and above
- 0' to -5'
- 5' to -10'
- 10' to -20'
- 20' to -30'
- 30' to -35'
- 35' to -40'
- 40' to -45'
- 45' and below

NOTES:

Horizontal Coordinate System:
North American Datum of 1983 (NAD83), projected to the State Plane Coordinate System (SPCS), Louisiana South Zone. Distance units in U.S. Survey Feet.

Vertical Datum:
Soundings are shown in feet and indicate depths below Low Water Reference Plane 2007 (NGVD).

Distances on the Mississippi River, above and below Head of Passes are shown at 1 mile intervals.

The location of navigation aids are base on and provided by the U.S. Coast Guard and USACE crew.

2015 Aerial Photography data source: NAIP, USDA-FSA-APFO Aerial Photography Field Office.

Reference is N.O.A. Navigation Chart No. 11370.

** Shoalest Sounding per Quarter per Reach.

*** High frequency (200 kHz) survey data represents the first signal return at a sounding location and will include suspended solids, known as "fluff", if present. Low frequency (20 kHz) survey data normally penetrates through this "fluff" layer to depict elevations of consolidated bottom material. Low frequency accuracies may vary depending on channel conditions and fathometer settings.

LWRP: 2.1
Gage Reading: BR:12.5D:7.0 USED:10.8 NGVD
Sea Conditions: CALM
Vessel Name: M/V OB 167
Survey Type: CONDITION
Sounding Frequency***: HIGH

0 500 1,000 1,500 2,000 2,500 Feet

**Sheet Reference Number
8 of 97**