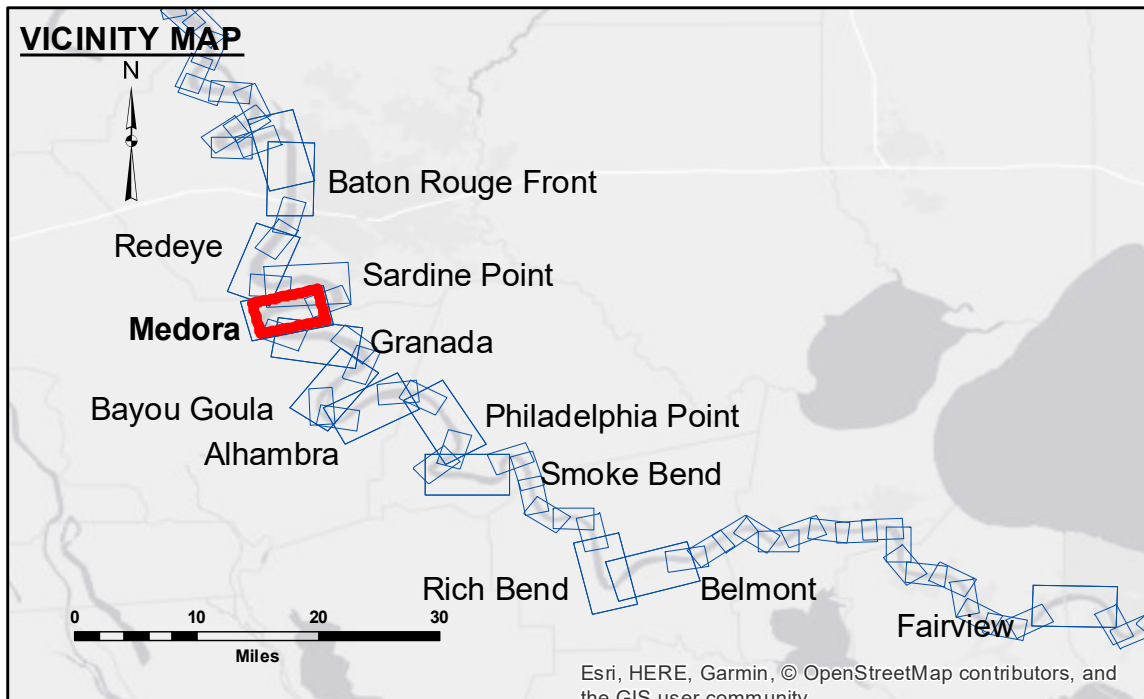


DISCLAIMER: The data represents the results of data collection processing for a specific US Army Corps of Engineers project. It is not intended for use in any other project. The user is responsible for the accuracy, completeness, and reliability of the data. The user is responsible for the results of any analysis or interpretation of the data. The user is responsible for the results of any use of the data for purposes other than those intended by the US Army Corps of Engineers. The user is responsible for the results of any use of the data for purposes other than those intended by the US Army Corps of Engineers. The user is responsible for the results of any use of the data for purposes other than those intended by the US Army Corps of Engineers.

Submitted:	Surveyed By: JH/SPS
Recommended:	Plotted By: BD
Approved:	Checked By: AC

**MISSISSIPPI RIVER - B.R. TO GULF
MEDORA RECON
MR_08_MED_20190604_CS
04 June 2019**



LEGEND

- Federal Navigation Channel
- Federal Navigation Center Line
- As-built Pipeline/Cable
- Unconfirmed Pipeline/Cable
- Project Depth Contour
- Cable Area
- Placement Area
- Anchorage Area
- ⊗ Obstruction Point
- ✈ Wrecks-Submerged
- Borrow Area
- Shoalest Sounding**
- ☆ Beacon, General
- ◆ Red Navigation Buoy
- ◆ Green Navigation Buoy
- 0' and above
- 0' to -5'
- 5' to -10'
- 10' to -20'
- 20' to -30'
- 30' to -35'
- 35' to -40'
- 40' to -45'
- 45' and below

NOTES:

Horizontal Coordinate System:
North American Datum of 1983 (NAD83), projected to the State Plane Coordinate System (SPCS), Louisiana South Zone. Distance units in U.S. Survey Feet.

Vertical Datum:
Soundings are shown in feet and indicate depths below Low Water Reference Plane 2007 (NGVD).

Distances on the Mississippi River, above and below Head of Passes are shown at 1 mile intervals.

The location of navigation aids are base on and provided by the U.S. Coast Guard and USACE crew.

2015 Aerial Photography data source: NAIP, USDA-FSA-APFO Aerial Photography Field Office.

Reference is N.O.A. Navigation Chart No. 11370.

** Shoalest Sounding per Quarter per Reach.

*** High frequency (200 kHz) survey data represents the first signal return at a sounding location and will include suspended solids, known as "fluff", if present. Low frequency (20 kHz) survey data normally penetrates through this "fluff" layer to depict elevations of consolidated bottom material. Low frequency accuracies may vary depending on channel conditions and fathometer settings.

LWRP: 2.1
Gage Reading: BR:43.1 D:31.0 USED:39.4 NGVD
Sea Conditions: CALM
Vessel Name: M/V LAFOURCHE
Survey Type: CONDITION
Sounding Frequency***: HIGH

0 500 1,000 1,500 2,000 2,500 Feet

**Sheet Reference Number
8 of 97**