

Accession: 20170712_CS
Date: 12 July 2017

Project Name: MISSISSIPPI RIVER - B.R. TO GULF GRANADA RECON

Sheet Reference Number: 10 of 97

Revision Number: 3.13-20160811

Legend:

- Federal Navigation Channel
- Federal Navigation Center Line
- As-built Pipeline/Cable
- Unconfirmed Pipeline/Cable
- Project Depth Contour
- Cable Area
- Placement Area
- Anchorage Area
- ⊗ Obstruction Point
- ✦ Wrecks-Submerged
- Borrow Area
- Shoalest Sounding**
- ☆ Beacon, General
- ◆ Red Navigation Buoy
- ◆ Green Navigation Buoy

Depth Contours:

- 0' and above
- 0' to -5'
- 5' to -10'
- 10' to -20'
- 20' to -30'
- 30' to -35'
- 35' to -40'
- 40' to -45'
- 45' and below

Other Symbols:

- Water Tower
- Zion Rock Cem & Church
- Bayou
- Paul
- Sunshine Oil Field
- Alhambra Plantation
- Traylor Plantation
- Evergreen Plantation

Notes:

Horizontal Coordinate System: North American Datum of 1983 (NAD83), projected to the State Plane Coordinate System (SPCS), Louisiana South Zone. Distance units in U.S. Survey Feet.

Vertical Datum: Soundings are shown in feet and indicate depths below Low Water Reference Plane 2007 (NGVD). Distances on the Mississippi River, above and below Head of Passes are shown at 1 mile intervals.

The location of navigation aids are based on and provided by the U.S. Coast Guard and USACE crew.

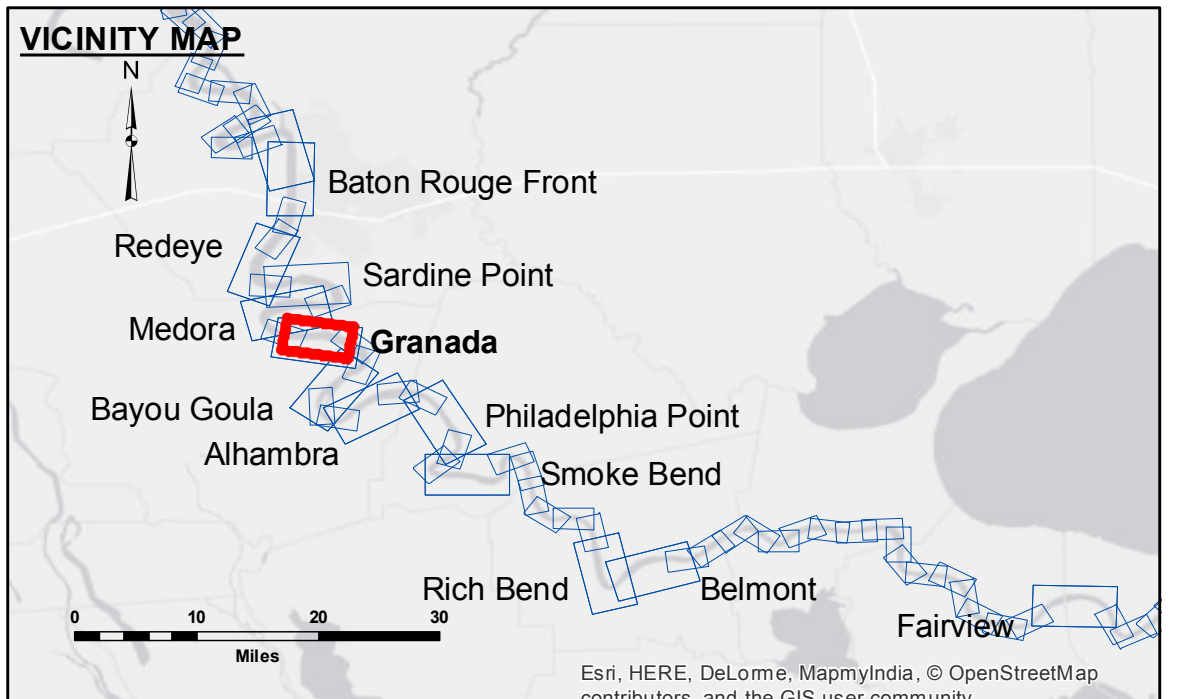
2010 Aerial Photography data source: NAIP, USDA-FSA-APFO Aerial Photography Field Office.

Reference is N.O.A. Navigation Chart No. 11370.

** Shoalest Sounding per Quarter per Reach.

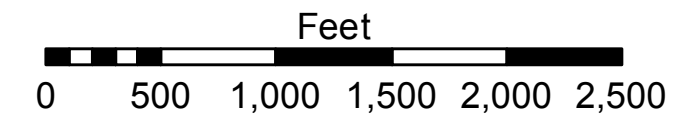
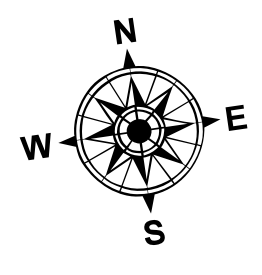
*** High frequency (200 kHz) survey data represents the first signal return at a sounding location and will include suspended solids, known as "fluff", if present. Low frequency (20 kHz) survey data normally penetrates through this "fluff" layer to depict elevations of consolidated bottom material. Low frequency accuracies may vary depending on channel conditions and fathometer settings.

U.S. ARMY CORPS OF ENGINEERS NEW ORLEANS DISTRICT	
Submitted:	Surveyed By: DS/JA
Recommended: Chief, Survey Section	Plotted By: AO
Approved: Chief, Waterways Maintenance Section	Checked By: AO



LEGEND

--- Federal Navigation Channel	○ Cable Area	□ Borrow Area	0' and above
— Federal Navigation Center Line	□ Placement Area	● Shoalest Sounding**	0' to -5'
— As-built Pipeline/Cable	□ Anchorage Area	☆ Beacon, General	-5' to -10'
..... Unconfirmed Pipeline/Cable	⊗ Obstruction Point	◆ Red Navigation Buoy	-10' to -20'
— Project Depth Contour	✦ Wrecks-Submerged	◆ Green Navigation Buoy	-20' to -30'
			-30' to -35'
			-35' to -40'
			-40' to -45'
			-45' and below



LWRP: 1.9
 Gage Reading: BR:25.0D:16.0 USED: 20.9 NGVD
 Sea Conditions: CALM
 Vessel Name: BURWOOD
 Survey Type: CONDITION
 Sounding Frequency***: HIGH

NOTES:

Horizontal Coordinate System: North American Datum of 1983 (NAD83), projected to the State Plane Coordinate System (SPCS), Louisiana South Zone. Distance units in U.S. Survey Feet.

Vertical Datum: Soundings are shown in feet and indicate depths below Low Water Reference Plane 2007 (NGVD). Distances on the Mississippi River, above and below Head of Passes are shown at 1 mile intervals.

The location of navigation aids are based on and provided by the U.S. Coast Guard and USACE crew.

2010 Aerial Photography data source: NAIP, USDA-FSA-APFO Aerial Photography Field Office.

Reference is N.O.A. Navigation Chart No. 11370.

** Shoalest Sounding per Quarter per Reach.

*** High frequency (200 kHz) survey data represents the first signal return at a sounding location and will include suspended solids, known as "fluff", if present. Low frequency (20 kHz) survey data normally penetrates through this "fluff" layer to depict elevations of consolidated bottom material. Low frequency accuracies may vary depending on channel conditions and fathometer settings.

MISSISSIPPI RIVER - B.R. TO GULF GRANADA RECON

MR_10_GRA_20170712_CS

12 July 2017

Sheet Reference Number
 10 of 97

Revision Number:
 3.13-20160811