

Accession: 20170719_CS
Project Name: GRANADA RECON
Date: 19 July 2017

Submitted: RYLAND/ADAMS
Plotted By: AO
Checked By: AO

Recommended: Chief, Survey Section
Approved: Chief, Waterways Maintenance Section

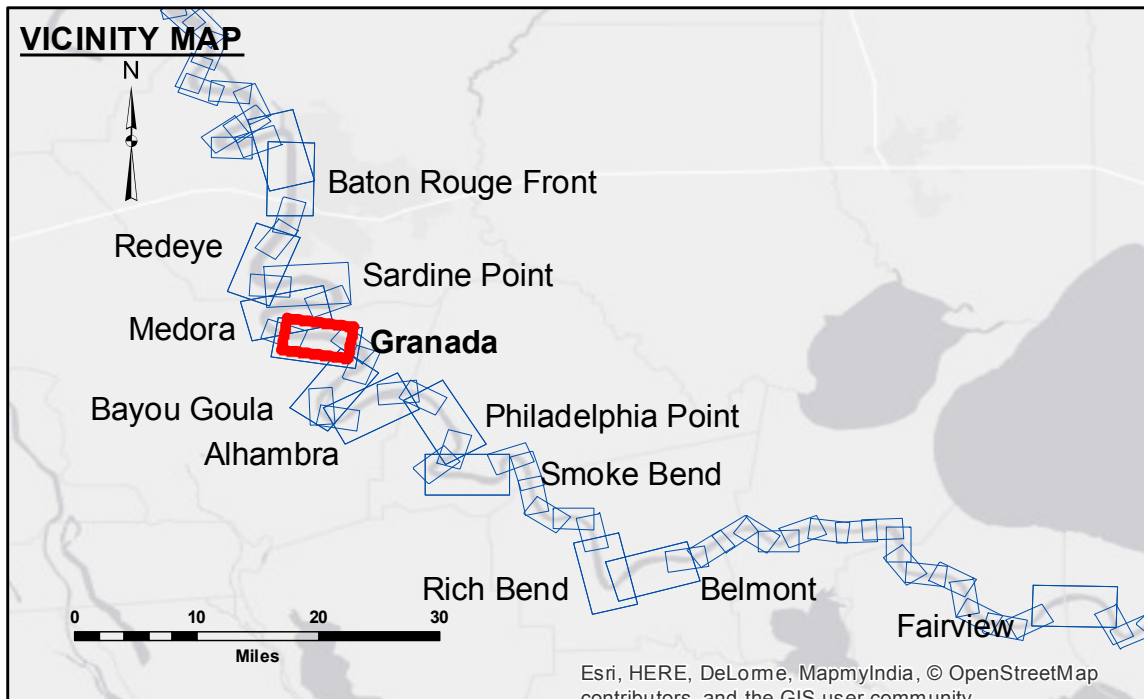
**U.S. ARMY CORPS OF ENGINEERS
 NEW ORLEANS DISTRICT**

**MISSISSIPPI RIVER - B.R. TO GULF
 GRANADA RECON
 MR_10_GRA_20170719_CS
 19 July 2017**

**Sheet Reference Number
 10 of 97**

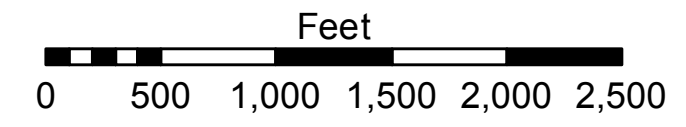
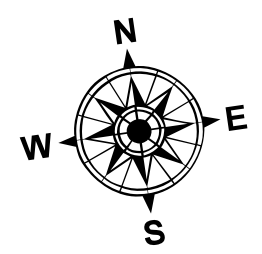
**Revision Number:
 3.13-20160811**

Distribution Liability: The data represents the results of data collection processing for a specific US Army Corps of Engineers project. It is not intended for use in any other project, and its use is limited to the project for which it was collected. The user is responsible for the results of any application of the data for other than its intended purpose. Data Collection: Hydrographic survey data is subject to change due to several factors including but not limited to changing hydrographic conditions when developed after the date of the survey. The information depicted on this map represents the results of a survey conducted on the date shown. It is not intended to represent the general condition existing at this time.



LEGEND

--- Federal Navigation Channel	○ Cable Area	□ Borrow Area	■ 0' and above
— Federal Navigation Center Line	□ Placement Area	● Shoalest Sounding**	■ 0' to -5'
— As-built Pipeline/Cable	□ Anchorage Area	★ Beacon, General	■ -5' to -10'
..... Unconfirmed Pipeline/Cable	⊗ Obstruction Point	◆ Red Navigation Buoy	■ -10' to -20'
— Project Depth Contour	⚓ Wrecks-Submerged	◆ Green Navigation Buoy	■ -20' to -30'
			■ -30' to -35'
			■ -35' to -40'
			■ -40' to -45'
			■ -45' and below



LWRP: 1.9
 Gage Reading: BR:24.1D:15.6 USED:20.20 NGVD
 Sea Conditions: CALM
 Vessel Name: M/V BURROWD
 Survey Type: CONDITION
 Sounding Frequency***: HIGH

NOTES:

Horizontal Coordinate System:
 North American Datum of 1983 (NAD83), projected to the State Plane Coordinate System (SPCS), Louisiana South Zone. Distance units in U.S. Survey Feet.

Vertical Datum:
 Soundings are shown in feet and indicate depths below Low Water Reference Plane 2007 (NGVD).

Distances on the Mississippi River, above and below Head of Passes are shown at 1 mile intervals.

The location of navigation aids are based on and provided by the U.S. Coast Guard and USACE crew.

2010 Aerial Photography data source: NAIP, USDA-FSA-APFO Aerial Photography Field Office.

Reference is N.O.A. Navigation Chart No. 11370.

** Shoalest Sounding per Quarter per Reach.

*** High frequency (200 kHz) survey data represents the first signal return at a sounding location and will include suspended solids, known as "fluff", if present. Low frequency (20 kHz) survey data normally penetrates through this "fluff" layer to depict elevations of consolidated bottom material. Low frequency accuracies may vary depending on channel conditions and fathometer settings.