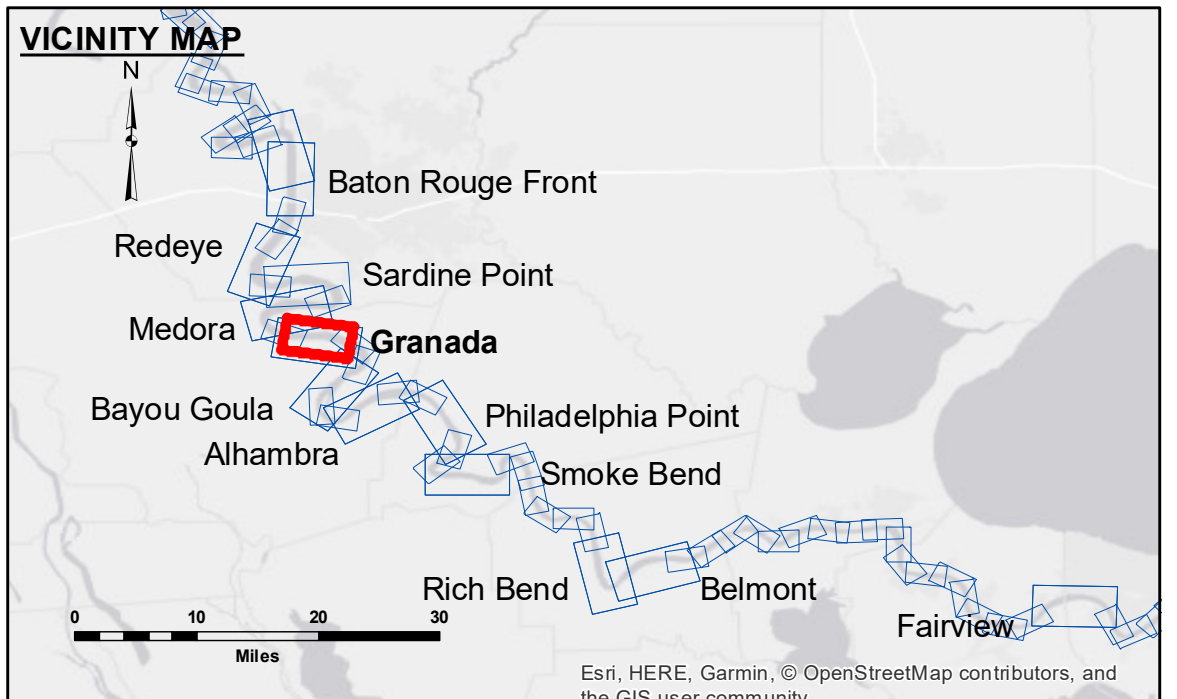


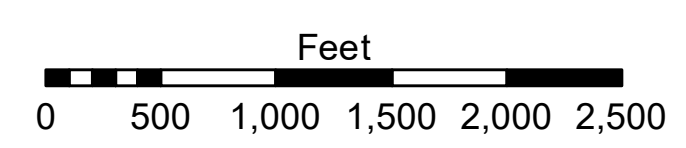
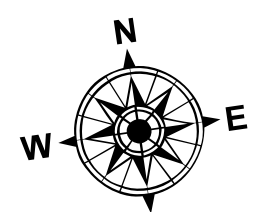
DISCLAIMER
 The United States Government furnishes these data and the recipient accepts and uses them with the express understanding that the data are not to be used for any purpose other than that for which they were prepared. The user is responsible for the results of any use of the data for other than its intended purpose. The application of the data for other than its intended purpose is at the user's risk. The Corps of Engineers does not warrant the accuracy of the data for any purpose other than that for which they were prepared. The Corps of Engineers does not assume any liability for the use of the data for other than its intended purpose. The information depicted on this map represents the results of a survey conducted on the ground and is not to be used for any purpose other than that for which it was prepared. The Corps of Engineers does not assume any liability for the use of the data for other than its intended purpose.

U.S. ARMY CORPS OF ENGINEERS NEW ORLEANS DISTRICT		
Submitted:	Surveyed By: SPPS	Plotted By: BD
Recommended: Chief, Survey Section	Checked By: AC	
Approved:	Chief, Waterways Maintenance Section	

**MISSISSIPPI RIVER - B.R. TO GULF
 GRANADA RECON
 MR_10_GRA_20190424_CS
 24 April 2019**



LEGEND		Borrow Area		Depth Contour	
--- Federal Navigation Channel	○ Cable Area	□ Borrow Area	■ 0' and above	■ -5' to -10'	■ -40' to 45'
— Federal Navigation Center Line	□ Placement Area	● Shoalest Sounding**	■ -5' to -10'	■ -10' to -20'	■ -35' to -40'
— As-built Pipeline/Cable	□ Anchorage Area	★ Beacon, General	■ -10' to -20'	■ -20' to -30'	■ -45' and below
..... Unconfirmed Pipeline/Cable	⊗ Obstruction Point	◆ Red Navigation Buoy	■ -20' to -30'	■ -30' to -35'	
— Project Depth Contour	⚓ Wrecks-Submerged	◆ Green Navigation Buoy	■ -30' to -35'	■ -35' to -40'	



LWRP: 1.9
 Gage Reading: BR:40.88 D:29.77 USED:35.8 NGVD
 Sea Conditions: CALM
 Vessel Name: M/V LAFOURCHE
 Survey Type: CONDITION
 Sounding Frequency***: HIGH

NOTES:
 Horizontal Coordinate System:
 North American Datum of 1983 (NAD83), projected to the State Plane
 Coordinate System (SPCS), Louisiana South Zone. Distance units in U.S. Survey Feet.
 Vertical Datum:
 Soundings are shown in feet and indicate depths below Low Water Reference Plane 2007 (NGVD).
 Distances on the Mississippi River, above and below Head of Passes are shown
 at 1 mile intervals.
 The location of navigation aids are base on and provided by the U.S. Coast Guard and USACE crew.
 2015 Aerial Photography data source: NAIP, USDA-FSA-APFO Aerial Photography Field Office.
 Reference is N.O.A. Navigation Chart No. 11370.
 ** Shoalest Sounding per Quarter per Reach.
 *** High frequency (200 kHz) survey data represents the first signal return at a sounding
 location and will include suspended solids, known as "fluff", if present. Low frequency (20 kHz)
 survey data normally penetrates through this "fluff" layer to depict elevations of consolidated bottom
 material. Low frequency accuracies may vary depending on channel conditions and fathometer
 settings.

**Sheet
 Reference
 Number
 10 of 97**