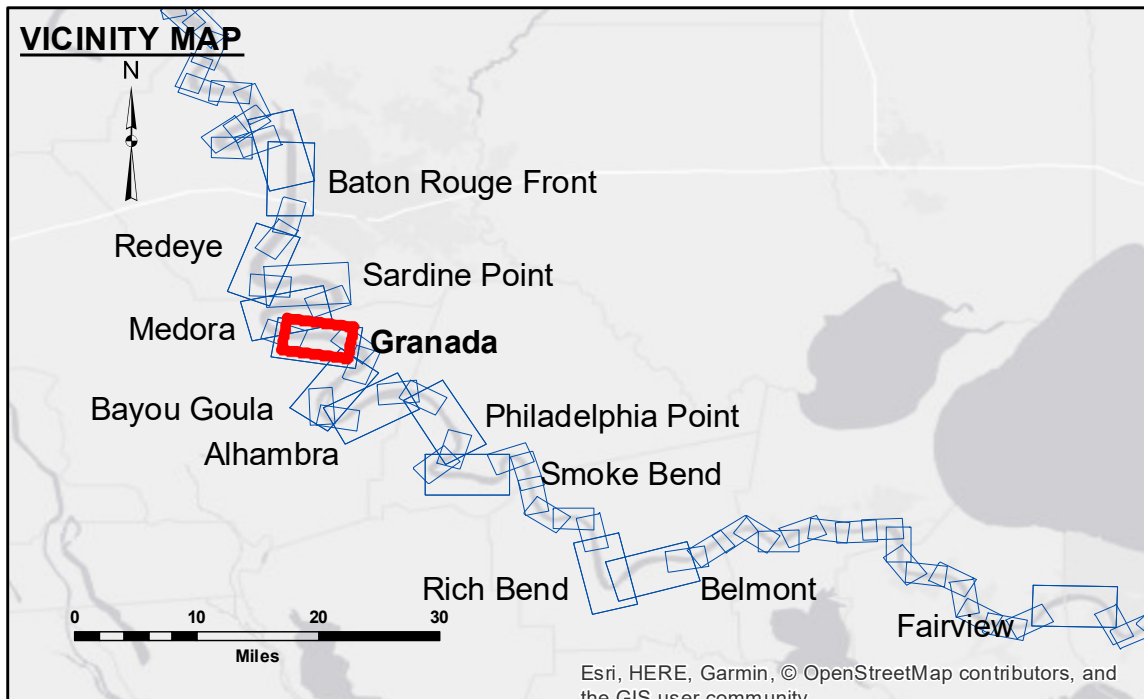


**DISCLAIMER**  
 The information depicted on this map represents the results of a data collection project for a specific US Army Corps of Engineers project. The data represents the results of data collection for a specific US Army Corps of Engineers project. It is not intended for use in any other project. The user is responsible for the results of any use of this data. The user is responsible for the results of any use of this data. The user is responsible for the results of any use of this data.

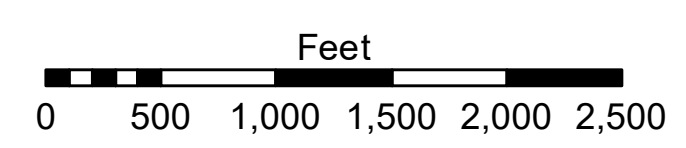
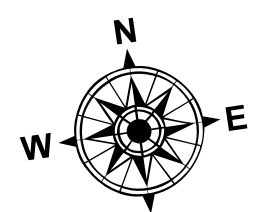
|  |                      |
|--|----------------------|
| U.S. ARMY CORPS OF ENGINEERS<br>NEW ORLEANS DISTRICT |                      |
| Submitted:   | Surveyed By: DJS/SFS |
| Recommended: Chief, Survey Section                   | Plotted By: BD       |
| Approved: Chief, Waterways Maintenance Section       | Checked By: AC       |

**MISSISSIPPI RIVER - B.R. TO GULF  
 GRANADA RECON  
 MR\_10\_GRA\_20190709\_CS  
 09 July 2019**



**LEGEND**

|                                  |                     |                         |                  |
|----------------------------------|---------------------|-------------------------|------------------|
| --- Federal Navigation Channel   | ○ Cable Area        | □ Borrow Area           | ■ 0' and above   |
| — Federal Navigation Center Line | ■ Placement Area    | ● Shoalest Sounding**   | ■ 0' to -5'      |
| — As-built Pipeline/Cable        | □ Anchorage Area    | ☆ Beacon, General       | ■ -5' to -10'    |
| ..... Unconfirmed Pipeline/Cable | ⊗ Obstruction Point | ◆ Red Navigation Buoy   | ■ -10' to -20'   |
| — Project Depth Contour          | ⚓ Wrecks-Submerged  | ◆ Green Navigation Buoy | ■ -20' to -30'   |
|                                  |                     |                         | ■ -30' to -35'   |
|                                  |                     |                         | ■ -35' to -40'   |
|                                  |                     |                         | ■ -40' to 45'    |
|                                  |                     |                         | ■ -45' and below |



LWRP: 1.9  
 Gage Reading: BR:42.26 D:30.08 USED:36.7 NGVD  
 Sea Conditions: CHOPPY  
 Vessel Name: M/V LAFOURCHE  
 Survey Type: CONDITION  
 Sounding Frequency\*\*\*: HIGH

**NOTES:**  
 Horizontal Coordinate System: North American Datum of 1983 (NAD83), projected to the State Plane Coordinate System (SPCS), Louisiana South Zone. Distance units in U.S. Survey Feet.  
 Vertical Datum: Soundings are shown in feet and indicate depths below Low Water Reference Plane 2007 (NGVD).  
 Distances on the Mississippi River, above and below Head of Passes are shown at 1 mile intervals.  
 The location of navigation aids are based on and provided by the U.S. Coast Guard and USACE crew.  
 2015 Aerial Photography data source: NAIP, USDA-FSA-APFO Aerial Photography Field Office.  
 Reference is N.O.A.A. Navigation Chart No. 11370.  
 \*\* Shoalest Sounding per Quarter per Reach.  
 \*\*\* High frequency (200 kHz) survey data represents the first signal return at a sounding location and will include suspended solids, known as "fluff", if present. Low frequency (20 kHz) survey data normally penetrates through this "fluff" layer to depict elevations of consolidated bottom material. Low frequency accuracies may vary depending on channel conditions and fathometer settings.

**Sheet Reference Number  
 10 of 97**