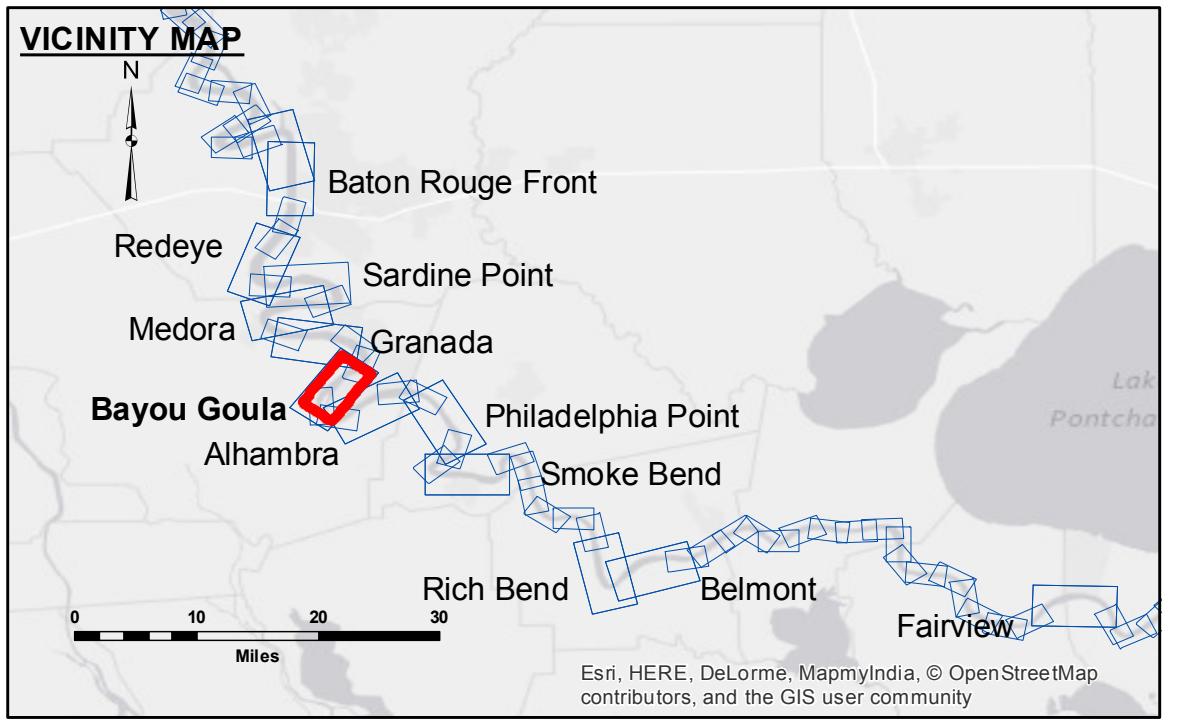


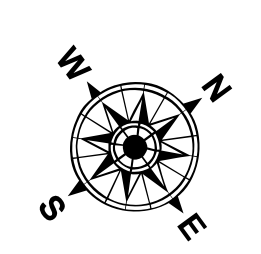
**DISCLAIMER:** The data represented on this map is the result of data collection processing for a specific US Army Corps of Engineers project. It is not intended for use for any other purpose and is not to be used as a substitute for a professional survey. The user is responsible for the results of any use of this data. The application of the data for other than its intended purpose is at the user's risk. The US Army Corps of Engineers does not assume any liability for the use of this data for any purpose other than that for which it was collected. The information depicted on this map represents the results of a survey conducted under contract to the US Army Corps of Engineers. It is not to be used as a substitute for a professional survey. The user is responsible for the results of any use of this data. The application of the data for other than its intended purpose is at the user's risk. The US Army Corps of Engineers does not assume any liability for the use of this data for any purpose other than that for which it was collected.

U.S. ARMY CORPS OF ENGINEERS NEW ORLEANS DISTRICT		
Submitted:	Surveyed By: DR,JA	Plotted By: AO
Recommended:	Chief, Survey Section	Checked By: MK
Approved:	Chief, Waterways Maintenance Section	

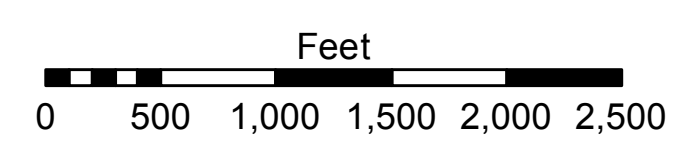
**MISSISSIPPI RIVER - B.R. TO GULF  
BAYOU GOULA RECON  
MR\_13\_GOU\_20151201  
01 December 2015**



LEGEND			
--- Federal Navigation Channel	○ Cable Area	□ Borrow Area	■ 0' and above
— Federal Navigation Center Line	□ Placement Area	● Shoalest Sounding**	■ 0' to -5'
— As-built Pipeline/Cable	□ Anchorage Area	☆ Beacon, General	■ -5' to -10'
..... Unconfirmed Pipeline/Cable	⊗ Obstruction Point	◆ Red Navigation Buoy	■ -10' to -20'
— Project Depth Contour	⚓ Wrecks-Submerged	◆ Green Navigation Buoy	■ -20' to -30'
			■ -30' to -35'
			■ -35' to -40'
			■ -40' to 45'
			■ -45' and below



LWRP: 1.8  
Gage Reading: BR:22.5D:15.3USED:18.3 NGVD  
Sea Conditions: CALM  
Vessel Name: M/V OB189  
Survey Type: CONDITION  
Sounding Frequency\*\*\*: HIGH



**NOTES:**  
Horizontal Coordinate System: North American Datum of 1983 (NAD83), projected to the State Plane Coordinate System (SPCS), Louisiana South Zone. Distance units in U.S. Survey Feet.  
Vertical Datum: Soundings are shown in feet and indicate depths below Low Water Reference Plane 2007 (NGVD). Distances on the Mississippi River, above and below Head of Passes are shown at 1 mile intervals.  
The location of navigation aids are base on and provided by the U.S. Coast Guard and USACE crew.  
2010 Aerial Photography data source: NAIP, USDA-FSA-APFO Aerial Photography Field Office.  
Reference is N.O.A. Navigation Chart No. 11370.  
\*\* Shoalest Sounding per Quarter per Reach.  
\*\*\* High frequency (200 kHz) survey data represents the first signal return at a sounding location and will include suspended solids, known as "fluff", if present. Low frequency (20 kHz) survey data normally penetrates through this "fluff" layer to depict elevations of consolidated bottom material. Low frequency accuracies may vary depending on channel conditions and fathometer settings.

**Sheet Reference Number  
13 of 97**