

**Access to Information:** The United States Government furnishes these data and the recipient accepts and uses them with the express understanding that the data are not to be used for any purpose other than that for which they were originally prepared. The user is responsible for the results of any application of the data for other than its intended purpose.

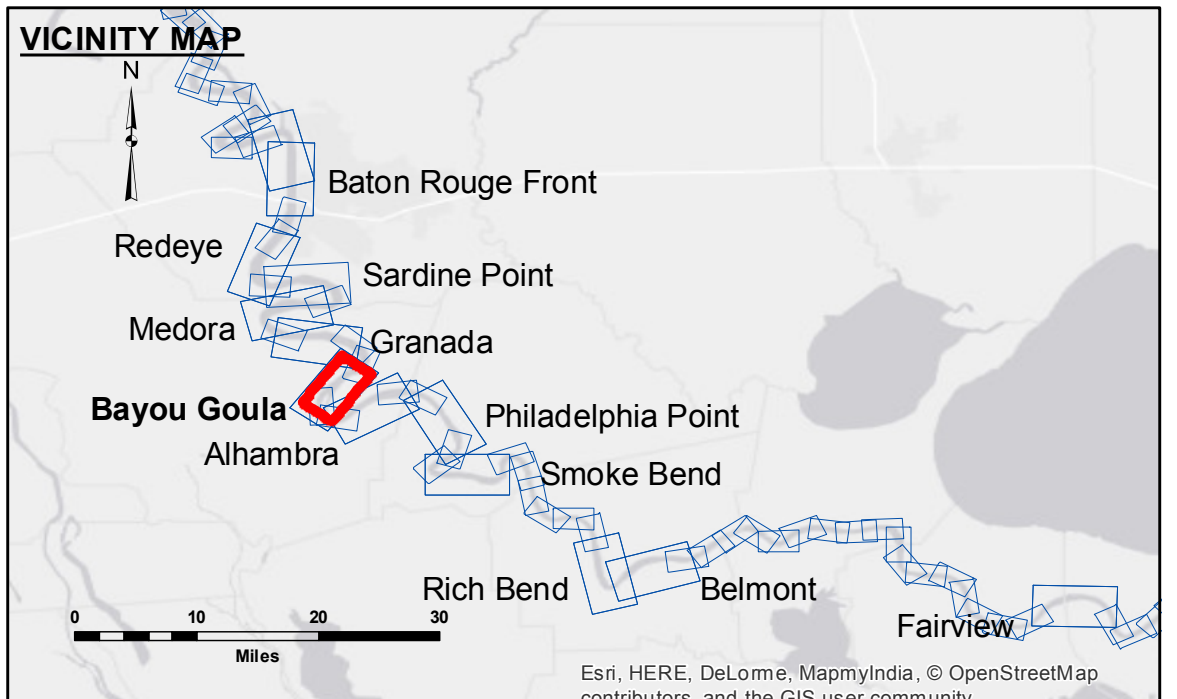
**Distribution Liability:** The data represents the results of data collection processing for a specific US Army Corps of Engineers project. The data is not to be used for any purpose other than that for which it was originally prepared. The user is responsible for the results of any application of the data for other than its intended purpose.

**Data Accuracy:** Hydrographic survey data is subject to change due to several factors including but not limited to dredging, sedimentation, and other natural processes. The user is responsible for the results of any application of the data for other than its intended purpose.

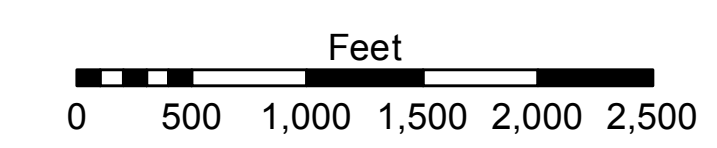
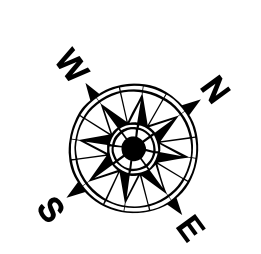
**Disclaimer:** The information depicted on this map represents the results of a survey conducted on or about the date of the survey. The Corps of Engineers does not warrant the accuracy of the information depicted on this map. The Corps of Engineers is not responsible for any damage or injury resulting from the use of this map.

U.S. ARMY CORPS OF ENGINEERS NEW ORLEANS DISTRICT		
Submitted:	Surveyed By: D/S/SPS	Plotted By: AO
Recommended:	Chief Survey Section	Checked By: MK
Approved:	Chief Waterways Maintenance Section	

**MISSISSIPPI RIVER - B.R. TO GULF  
BAYOU GOULA RECON  
MR\_13\_GOU\_20160708  
08 July 2016**



LEGEND			
--- Federal Navigation Channel	○ Cable Area	□ Borrow Area	■ 0' and above
— Federal Navigation Center Line	□ Placement Area	● Shoalest Sounding**	■ 0' to -5'
— As-built Pipeline/Cable	□ Anchorage Area	★ Beacon, General	■ -5' to -10'
..... Unconfirmed Pipeline/Cable	⊗ Obstruction Point	◆ Red Navigation Buoy	■ -10' to -20'
— Project Depth Contour	⚓ Wrecks-Submerged	◆ Green Navigation Buoy	■ -20' to -30'
			■ -30' to -35'
			■ -35' to -40'
			■ -40' to 45'
			■ -45' and below



LWRP: 1.8  
Gage Reading: BR:18.2D:10.6 USED:13.8 NGVD  
Sea Conditions: SMOOTH  
Vessel Name: OB189  
Survey Type: CONTROL  
Sounding Frequency\*\*\*: HIGH

**NOTES:**

Horizontal Coordinate System:  
North American Datum of 1983 (NAD83), projected to the State Plane Coordinate System (SPCS), Louisiana South Zone. Distance units in U.S. Survey Feet.

Vertical Datum:  
Soundings are shown in feet and indicate depths below Low Water Reference Plane 2007 (NGVD).

Distances on the Mississippi River, above and below Head of Passes are shown at 1 mile intervals.

The location of navigation aids are base on and provided by the U.S. Coast Guard and USACE crew.

2010 Aerial Photography data source: NAIP, USDA-FSA-APFO Aerial Photography Field Office.

Reference is N.O.A. Navigation Chart No. 11370.

\*\* Shoalest Sounding per Quarter per Reach.

\*\*\* High frequency (200 kHz) survey data represents the first signal return at a sounding location and will include suspended solids, known as "fluff", if present. Low frequency (20 kHz) survey data normally penetrates through this "fluff" layer to depict elevations of consolidated bottom material. Low frequency accuracies may vary depending on channel conditions and fathometer settings.

**Sheet Reference Number  
13 of 97**