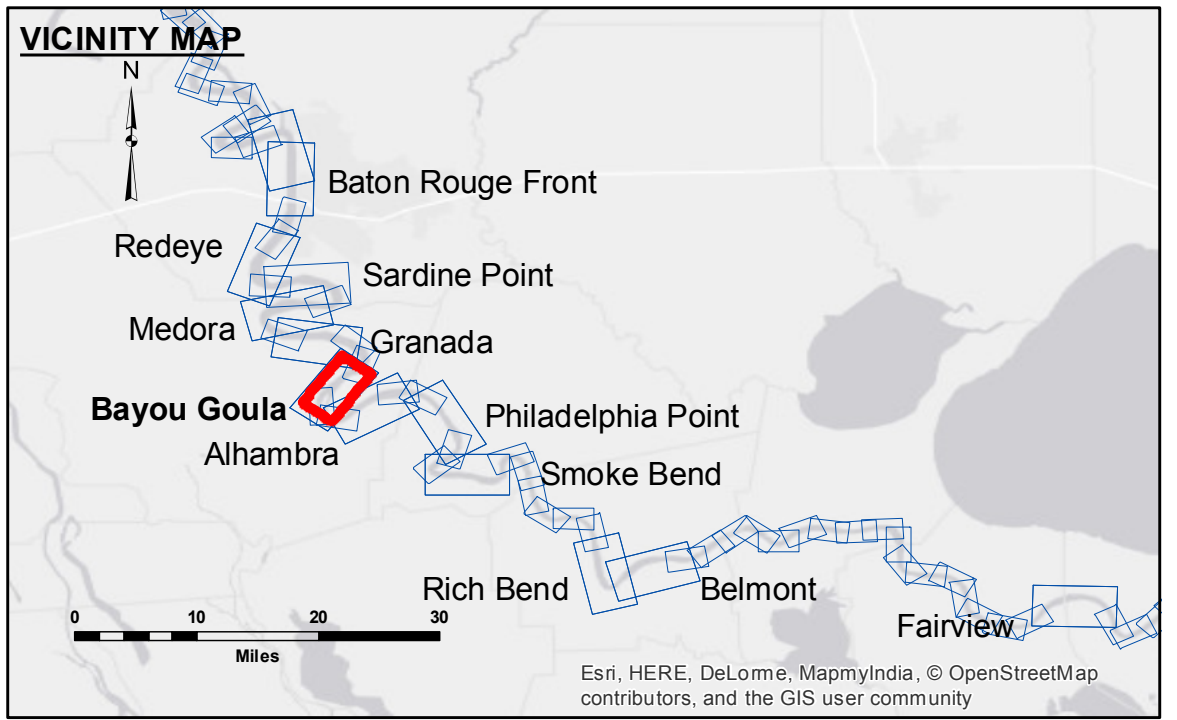


Accession: The United States Government furnishes these data and the recipient accepts and uses them with the express understanding that they are for official use only and that the accuracy, reliability, usability or suitability for any particular purpose of the information is not guaranteed. The user is responsible for the results of their use. The application of the data for other than its intended purpose is not recommended. The information depicted on this map represents the results of a survey conducted on the ground and is not intended to be used for any purpose other than that for which it was collected. The information is not to be used for any purpose other than that for which it was collected. The information is not to be used for any purpose other than that for which it was collected.

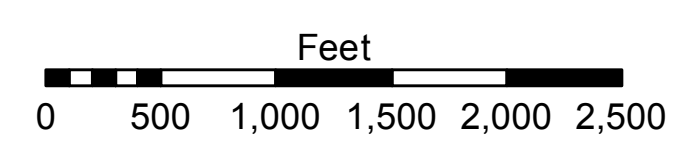
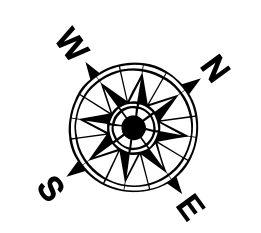
U.S. ARMY CORPS OF ENGINEERS NEW ORLEANS DISTRICT		
Submitted:	Surveyed By: SP,DR	Plotted By: BITD
Recommended: Chief Survey Section	Checked By: ATO	
Approved: Chief Waterways Maintenance Section		

MISSISSIPPI RIVER - B.R. TO GULF
BAYOU GOULA RECON
MR_13_GOU_20160712
12 July 2016



LEGEND	
--- Federal Navigation Channel	○ Cable Area
— Federal Navigation Center Line	□ Placement Area
— As-built Pipeline/Cable	□ Anchorage Area
..... Unconfirmed Pipeline/Cable	⊗ Obstruction Point
— Project Depth Contour	✈ Wrecks-Submerged
□ Borrow Area	★ Beacon, General
● Shoalest Sounding**	◆ Red Navigation Buoy
◆ Green Navigation Buoy	

0' and above	0' to -5'
-5' to -10'	-10' to -20'
-20' to -30'	-30' to -35'
-35' to -40'	-40' to -45'
-45' and below	



LWRP: 1.8
 Gage Reading: BR:16.66 D:9.45 USED: 12.60 NGVD
 Sea Conditions: CALM
 Vessel Name: OB-189
 Survey Type: CONDITION
 Sounding Frequency***: HIGH

NOTES:
 Horizontal Coordinate System: North American Datum of 1983 (NAD83), projected to the State Plane Coordinate System (SPCS), Louisiana South Zone. Distance units in U.S. Survey Feet.
 Vertical Datum: Soundings are shown in feet and indicate depths below Low Water Reference Plane 2007 (NGVD).
 Distances on the Mississippi River, above and below Head of Passes are shown at 1 mile intervals.
 The location of navigation aids are based on and provided by the U.S. Coast Guard and USACE crew.
 2010 Aerial Photography data source: NAIP, USDA-FSA-APFO Aerial Photography Field Office.
 Reference is N.O.A. Navigation Chart No. 11370.
 ** Shoalest Sounding per Quarter per Reach.
 *** High frequency (200 kHz) survey data represents the first signal return at a sounding location and will include suspended solids, known as "fluff", if present. Low frequency (20 kHz) survey data normally penetrates through this "fluff" layer to depict elevations of consolidated bottom material. Low frequency accuracies may vary depending on channel conditions and fathometer settings.

Sheet Reference Number
13 of 97
 Revision Number: 3.8-20150202