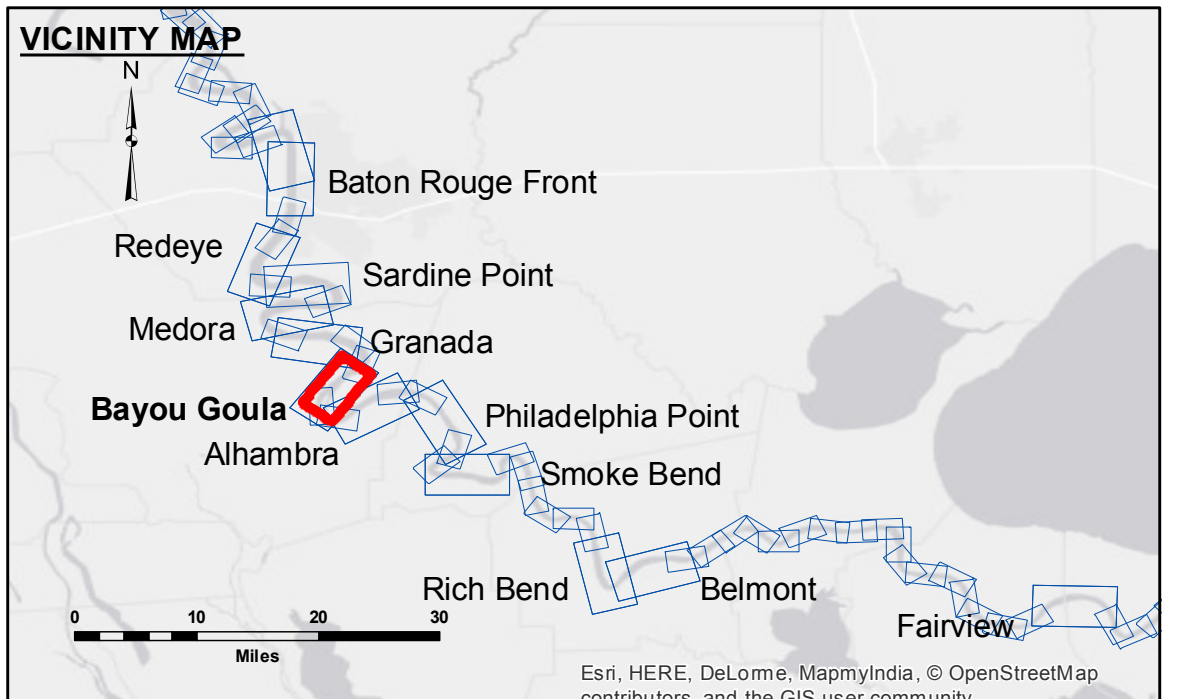


Accession: The United States Government furnishes these data and the recipient accepts and uses them with the express understanding that they are for official use only and that the accuracy, reliability, usability or suitability for any particular purpose of the information is not guaranteed. The user is responsible for the results of their use. The application of the data for other than its intended purpose is at the user's risk. The information depicted on this map represents the results of a survey conducted by the United States Army Corps of Engineers and is not to be used for any other purpose without the express written consent of the United States Army Corps of Engineers. The information depicted on this map represents the results of a survey conducted by the United States Army Corps of Engineers and is not to be used for any other purpose without the express written consent of the United States Army Corps of Engineers.

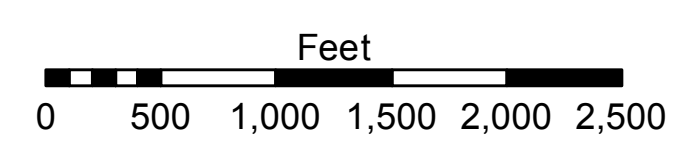
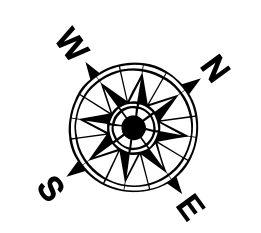
U.S. ARMY CORPS OF ENGINEERS NEW ORLEANS DISTRICT		
Submitted:	Surveyed By: SPS_JH	Plotted By: BD
Recommended:	Checked By: AC	Checked By: AC
Approved:	Chief, Waterways Maintenance Section	

**MISSISSIPPI RIVER - B.R. TO GULF
BAYOU GOULA RECON
MR_13_GOU_20160913
13 September 2016**



LEGEND	
--- Federal Navigation Channel	● Cable Area
— Federal Navigation Center Line	■ Placement Area
— As-built Pipeline/Cable	□ Anchorage Area
..... Unconfirmed Pipeline/Cable	⊗ Obstruction Point
— Project Depth Contour	✈ Wrecks-Submerged
□ Borrow Area	★ Beacon, General
● Shoalest Sounding**	◆ Red Navigation Buoy
◆ Green Navigation Buoy	

0' and above
0' to -5'
-5' to -10'
-10' to -20'
-20' to -30'
-30' to -35'
-35' to -40'
-40' to -45'
-45' and below



LWRP:
Gage Reading:
Sea Conditions:
Vessel Name:
Survey Type:
Sounding Frequency***: HIGH

LWRP:
BR:16.24 D:9.48 USED:12.4 NGVD
CALM
M/V LAFOURCHE
SURVEY_TYPE

NOTES:

Horizontal Coordinate System:
North American Datum of 1983 (NAD83), projected to the State Plane Coordinate System (SPCS), Louisiana South Zone. Distance units in U.S. Survey Feet.

Vertical Datum:
Soundings are shown in feet and indicate depths below Low Water Reference Plane 2007 (NGVD).

Distances on the Mississippi River, above and below Head of Passes are shown at 1 mile intervals.

The location of navigation aids are based on and provided by the U.S. Coast Guard and USACE crew.

2010 Aerial Photography data source: NAIP, USDA-FSA-APFO Aerial Photography Field Office.

Reference is N.O.A. Navigation Chart No. 11370.

** Shoalest Sounding per Quarter per Reach.

*** High frequency (200 kHz) survey data represents the first signal return at a sounding location and will include suspended solids, known as "fluff", if present. Low frequency (20 kHz) survey data normally penetrates through this "fluff" layer to depict elevations of consolidated bottom material. Low frequency accuracies may vary depending on channel conditions and fathometer settings.

**Sheet
Reference
Number
13 of 97**