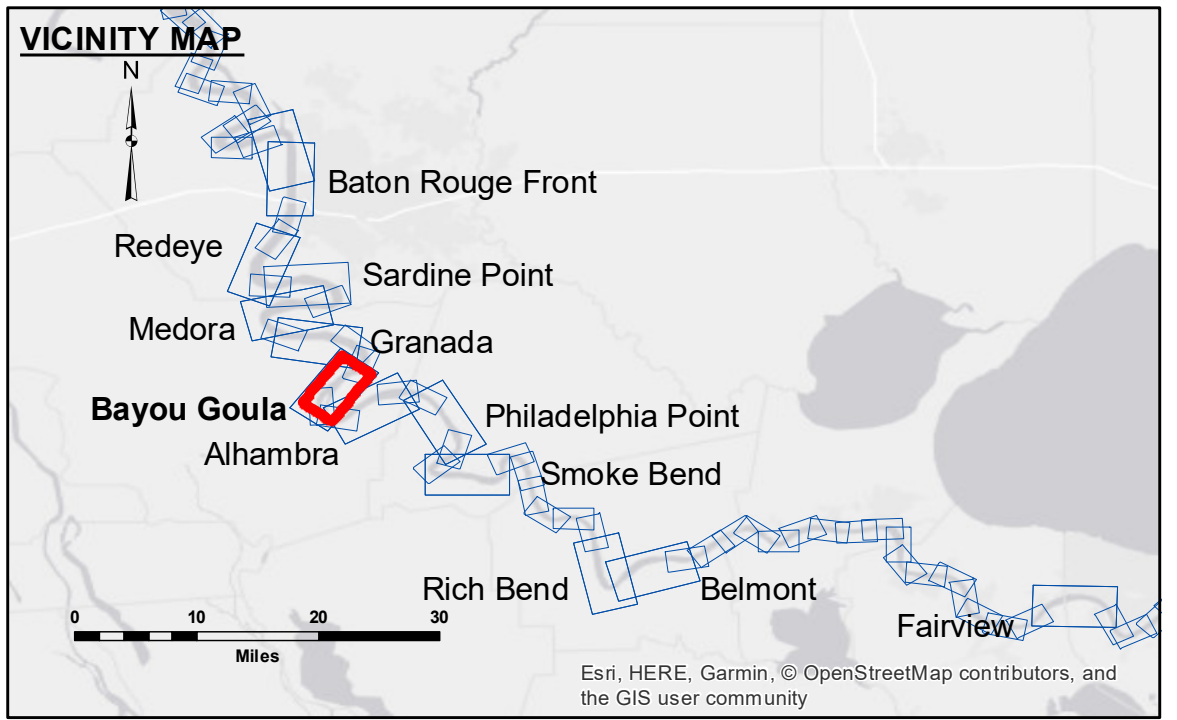


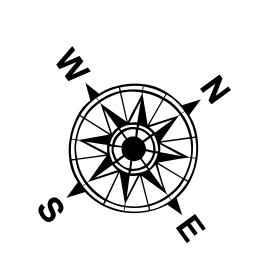
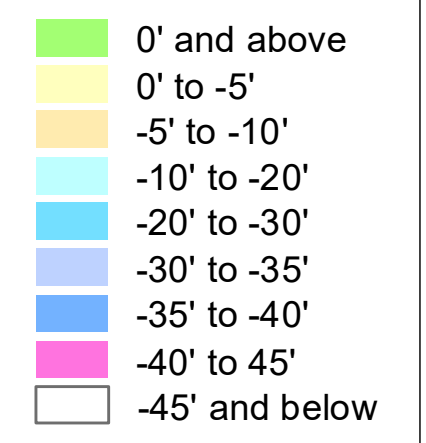
DISCLAIMER: The data represents the results of data collection processing for a specific US Army Corps of Engineers project. The data is only valid for its intended use, and accuracy is not guaranteed. The user is responsible for the results of their use. The application of the data for other than its intended purpose is not recommended. The user is responsible for the results of their use. The data is subject to change without notice. The user is responsible for the results of their use. The data is subject to change without notice. The user is responsible for the results of their use.

| | |
|--|----------------|
| U.S. ARMY CORPS OF ENGINEERS NEW ORLEANS DISTRICT | |
| Submitted By: | RYLAND/SONNIER |
| Recommended By: | AO |
| Checked By: | AO |

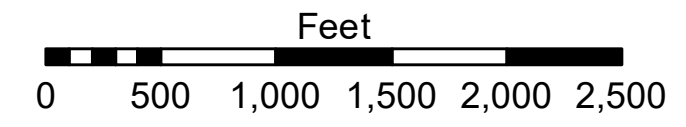
**MISSISSIPPI RIVER - B.R. TO GULF
BAYOU GOULA RECON
MR_13_GOU_20180830_CS
30 August 2018**



| LEGEND | |
|----------------------------------|-----------------------|
| --- Federal Navigation Channel | ● Cable Area |
| — Federal Navigation Center Line | ■ Placement Area |
| — As-built Pipeline/Cable | □ Anchorage Area |
| Unconfirmed Pipeline/Cable | ⊗ Obstruction Point |
| — Project Depth Contour | ✈ Wrecks-Submerged |
| □ Borrow Area | ★ Beacon, General |
| ● Shoalest Sounding** | ◆ Red Navigation Buoy |
| ◆ Green Navigation Buoy | |



LWRP: 1.8
Gage Reading: BR:12.5D:7.0 USED:9.4 NGVD
Sea Conditions: CALM
Vessel Name: M/V OB 167
Survey Type: CONDITION
Sounding Frequency***: HIGH



NOTES:
Horizontal Coordinate System: North American Datum of 1983 (NAD83), projected to the State Plane Coordinate System (SPCS), Louisiana South Zone. Distance units in U.S. Survey Feet.
Vertical Datum: Soundings are shown in feet and indicate depths below Low Water Reference Plane 2007 (NGVD).
Distances on the Mississippi River, above and below Head of Passes are shown at 1 mile intervals.
The location of navigation aids are based on and provided by the U.S. Coast Guard and USACE crew.
2015 Aerial Photography data source: NAIP, USDA-FSA-APFO Aerial Photography Field Office.
Reference is N.O.A. Navigation Chart No. 11370.
** Shoalest Sounding per Quarter per Reach.
*** High frequency (200 kHz) survey data represents the first signal return at a sounding location and will include suspended solids, known as "fluff", if present. Low frequency (20 kHz) survey data normally penetrates through this "fluff" layer to depict elevations of consolidated bottom material. Low frequency accuracies may vary depending on channel conditions and fathometer settings.

**Sheet Reference Number
13 of 97**