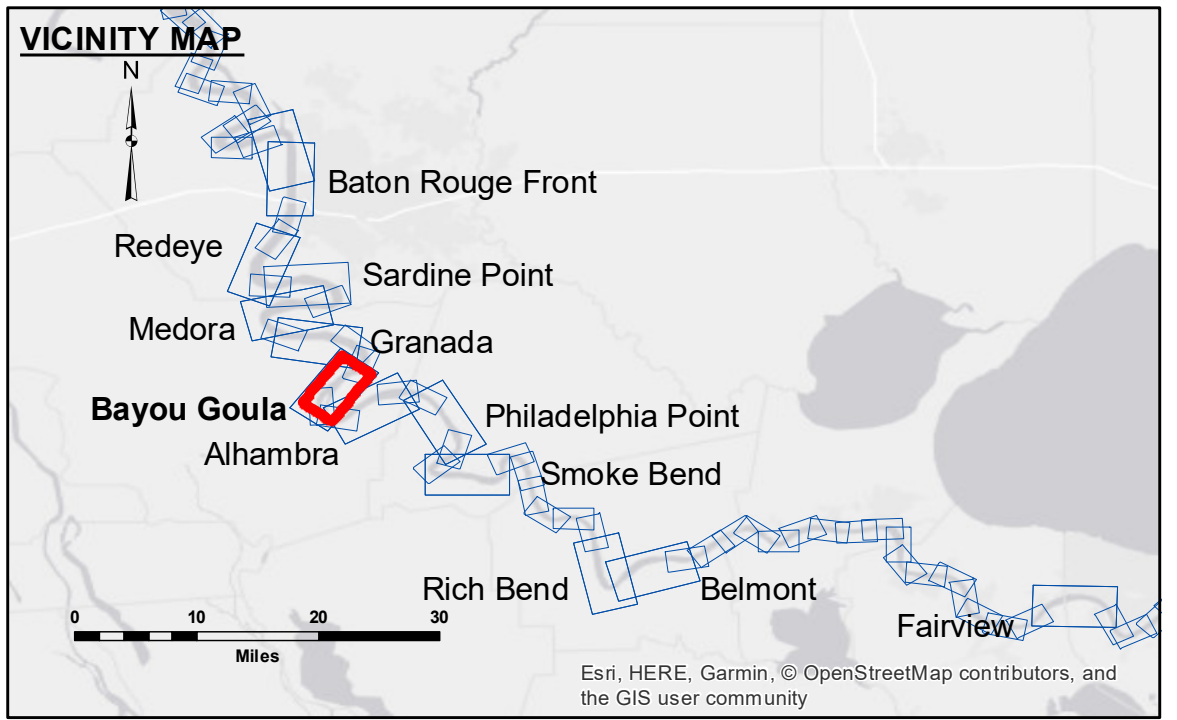


US Army Corps of Engineers
District: CEMVN

DISCLAIMER: The data represents the results of data collection performed for a specific US Army Corps of Engineers project. The data is only valid for the intended use, control, time and accuracy specifications. The user is responsible for the results. The user is not responsible for the results of the data. The application of the data for other than its intended purpose. Data Constraints: Hydrographic survey data is subject to change rapidly due to several factors including but not limited to dredging, sedimentation, and channel migration. The user is responsible for the results of the data. The information depicted on this map represents the results of a survey conducted on the date indicated. The information is considered current as of the date of the survey. The user is responsible for the results of the data as of the date of the survey. The user is responsible for the results of the data as of the date of the survey. The user is responsible for the results of the data as of the date of the survey.

U.S. ARMY CORPS OF ENGINEERS NEW ORLEANS DISTRICT		
Submitted:	Surveyed By: D/S/SPS	Plotted By: BD
Recommended: Chief Survey Section	Checked By: AC	Checked By: AC

**MISSISSIPPI RIVER - B.R. TO GULF
BAYOU GOULA RECON
MR_13_GOU_20190508_CS
08 May 2019**



LEGEND

--- Federal Navigation Channel	○ Cable Area	□ Borrow Area	■ 0' and above
— Federal Navigation Center Line	▭ Placement Area	● Shoalest Sounding**	■ 0' to -5'
— As-built Pipeline/Cable	⊗ Anchorage Area	☆ Beacon, General	■ -5' to -10'
⋯ Unconfirmed Pipeline/Cable	⊗ Obstruction Point	★ Red Navigation Buoy	■ -10' to -20'
— Project Depth Contour	⊗ Wrecks-Submerged	◆ Green Navigation Buoy	■ -20' to -30'
			■ -30' to -35'
			■ -35' to -40'
			■ -40' to -45'
			■ -45' and below

NOTES:

Horizontal Coordinate System:
North American Datum of 1983 (NAD83), projected to the State Plane Coordinate System (SPCS), Louisiana South Zone. Distance units in U.S. Survey Feet.

Vertical Datum:
Soundings are shown in feet and indicate depths below Low Water Reference Plane 2007 (NGVD).
Distances on the Mississippi River, above and below Head of Passes are shown at 1 mile intervals.

The location of navigation aids are based on and provided by the U.S. Coast Guard and USACE crew.
2015 Aerial Photography data source: NAIP, USDA-FSA-APFO Aerial Photography Field Office.

Reference is N.O.A. Navigation Chart No. 11370.

** Shoalest Sounding per Quarter per Reach.

*** High frequency (200 kHz) survey data represents the first signal return at a sounding location and will include suspended solids, known as "fluff", if present. Low frequency (20 kHz) survey data normally penetrates through this "fluff" layer to depict elevations of consolidated bottom material. Low frequency accuracies may vary depending on channel conditions and fathometer settings.

LWRP: 1.8
Gage Reading: BR:41.93 D:30.48 USED:35.4 NGVD
Sea Conditions: CALM
Vessel Name: M/V LAFORCHE
Survey Type: CONDITION
Sounding Frequency*:** HIGH

Scale: 0 500 1,000 1,500 2,000 2,500 Feet