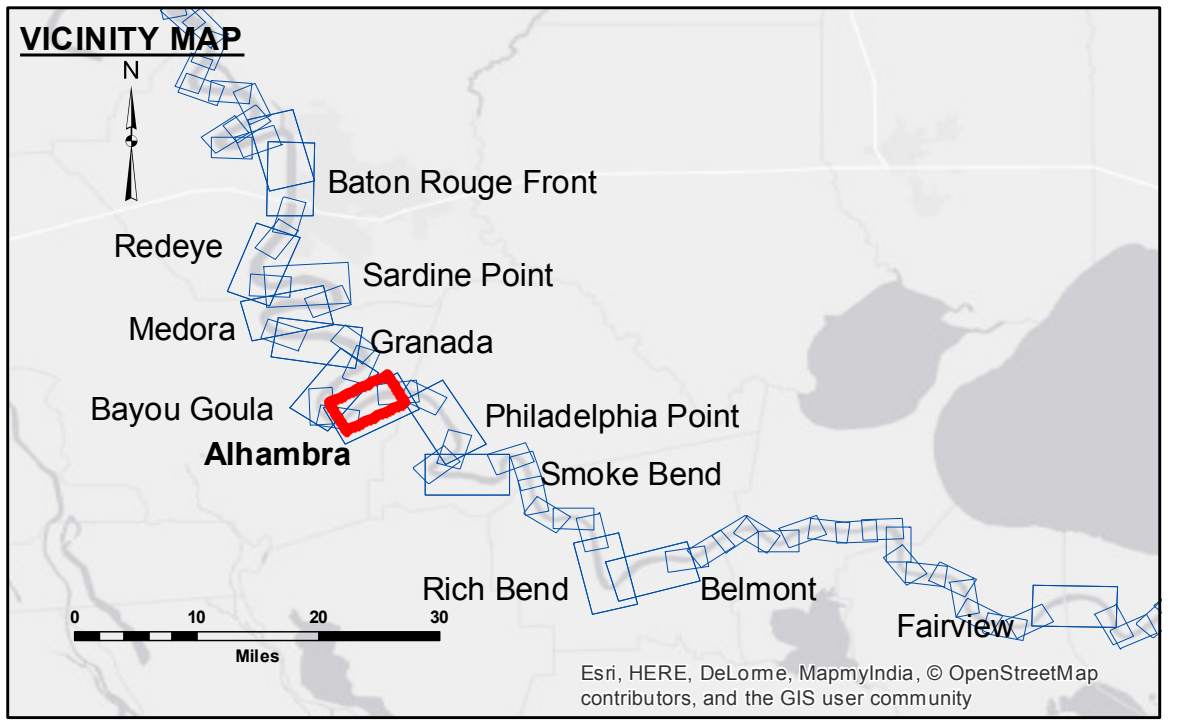


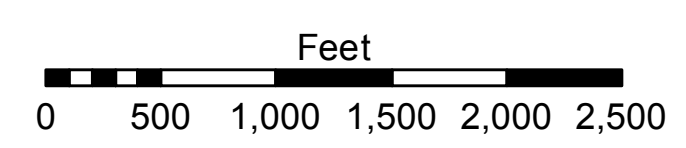
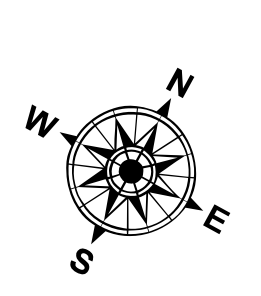
Access to this information is limited to authorized personnel only. The user is responsible for the results of any use of this information. The user is not to disseminate this information to other personnel without the express written consent of the U.S. Army Corps of Engineers. The information depicted on this map represents the results of a survey conducted on the ground and is not to be used for navigation purposes. The information is not to be used for navigation purposes. The information is not to be used for navigation purposes.

U.S. ARMY CORPS OF ENGINEERS NEW ORLEANS DISTRICT. Surveyed By: DS/DAG, Plotted By: AO, Checked By: AO.

MISSISSIPPI RIVER - B.R. TO GULF ALHAMBRA RECON MR_16_ALH_20170426_CS 26 April 2017



LEGEND: Federal Navigation Channel, Cable Area, Borrow Area, Shoalest Sounding, Beacon, Red Navigation Buoy, Green Navigation Buoy, Placement Area, Anchorage Area, Obstruction Point, Wrecks-Submerged, Depth Contour, and depth scale from 0' to -45' and below.



LWRP: 1.7, Gage Reading: BR:28.2D:19.4 USED:24.2 NGVD, Sea Conditions: CHOPPY, Vessel Name: OB189, Survey Type: RECON, Sounding Frequency***: HIGH

NOTES: Horizontal Coordinate System: North American Datum of 1983 (NAD83), Vertical Datum: Soundings are shown in feet and indicate depths below Low Water Reference Plane 2007 (NGVD), Reference is N.O.A. Navigation Chart No. 11370.