

ACCESS AND CONSENTS: The United States Government furnishes these data and the recipient accepts and uses them with the express understanding that they are not to be used for any purpose other than that specified in the contract. The user is responsible for the results of any use of these data. The application of the data for other than its intended purpose is prohibited. The user is responsible for the results of any use of these data. The application of the data for other than its intended purpose is prohibited.

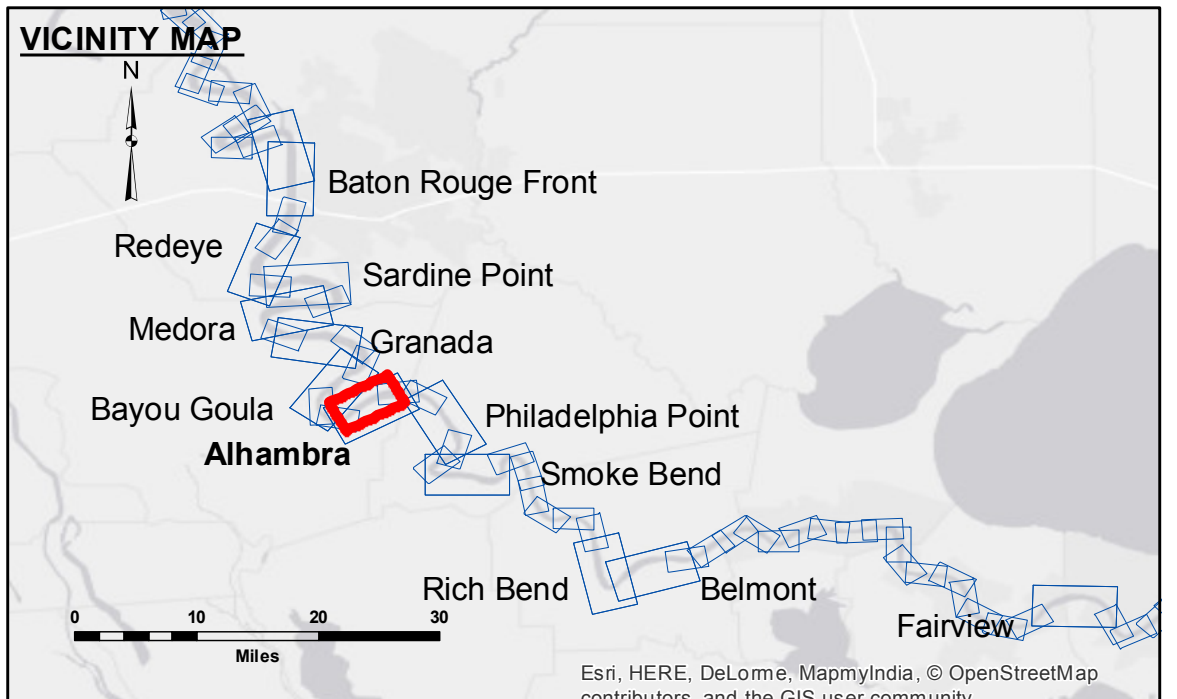
DATA DISCLAIMER: Hydrographic survey data is subject to change rapidly due to several factors including but not limited to dredging activities, channel migration, and other factors. The user is responsible for the results of any use of these data. The application of the data for other than its intended purpose is prohibited.

The information depicted on this map represents the results of a survey conducted on or about the date of the survey. It is not intended to represent the general condition existing at this time.

U.S. ARMY CORPS OF ENGINEERS NEW ORLEANS DISTRICT		
Submitted:	Surveyed By: DS/PS	Plotted By: AO
Recommended: Chief, Survey Section	Checked By: AO	
Approved: Chief, Waterways Maintenance Section		

**MISSISSIPPI RIVER - B.R. TO GULF
ALHAMBRA RECON
MR_16_ALH_20170919_AD
19 September 2017**

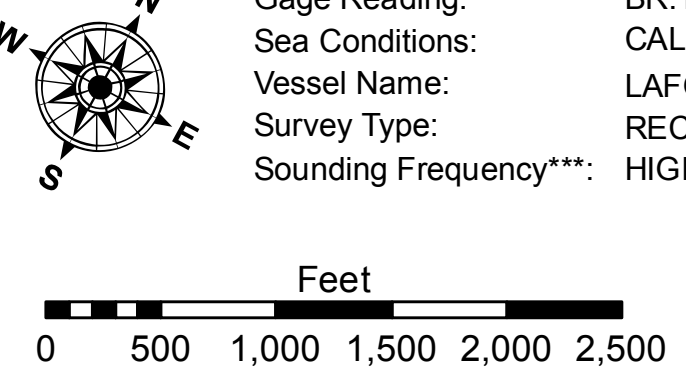
**Sheet
Reference
Number
16 of 97**



LEGEND		
--- Federal Navigation Channel	○ Cable Area	□ Borrow Area
— Federal Navigation Center Line	■ Placement Area	● Shoalest Sounding**
— As-built Pipeline/Cable	□ Anchorage Area	☆ Beacon, General
..... Unconfirmed Pipeline/Cable	⊗ Obstruction Point	♦ Red Navigation Buoy
— Project Depth Contour	⚓ Wrecks-Submerged	◆ Green Navigation Buoy
		0' and above
		0' to -5'
		-5' to -10'
		-10' to -20'
		-20' to -30'
		-30' to -35'
		-35' to -40'
		-40' to -45'
		-45' and below

LWRP: 1.7
 Gage Reading: BR:12.8D:7.3 USED:8.9 NGVD
 Sea Conditions: CALM
 Vessel Name: LAFOURCHE
 Survey Type: RECON
 Sounding Frequency***: HIGH

Notes:
 Horizontal Coordinate System:
 North American Datum of 1983 (NAD83), projected to the State Plane
 Coordinate System (SPCS), Louisiana South Zone. Distance units in U.S. Survey Feet.
 Vertical Datum:
 Soundings are shown in feet and indicate depths below Low Water Reference Plane 2007 (NGVD).
 Distances on the Mississippi River, above and below Head of Passes are shown
 at 1 mile intervals.
 The location of navigation aids are base on and provided by the U.S. Coast Guard and USACE crew.
 2010 Aerial Photography data source: NAIP, USDA-FSA-APFO Aerial Photography Field Office.
 Reference is N.O.A. Navigation Chart No. 11370.
 ** Shoalest Sounding per Quarter per Reach.
 *** High frequency (200 kHz) survey data represents the first signal return at a sounding
 location and will include suspended solids, known as "fluff", if present. Low frequency (20 kHz)
 survey data normally penetrates through this "fluff" layer to depict elevations of consolidated bottom
 material. Low frequency accuracies may vary depending on channel conditions and fathometer
 settings.



Esri, HERE, DeLorme, MapmyIndia, © OpenStreetMap contributors, and the GIS user community

Revision Number:
3.13-20160811