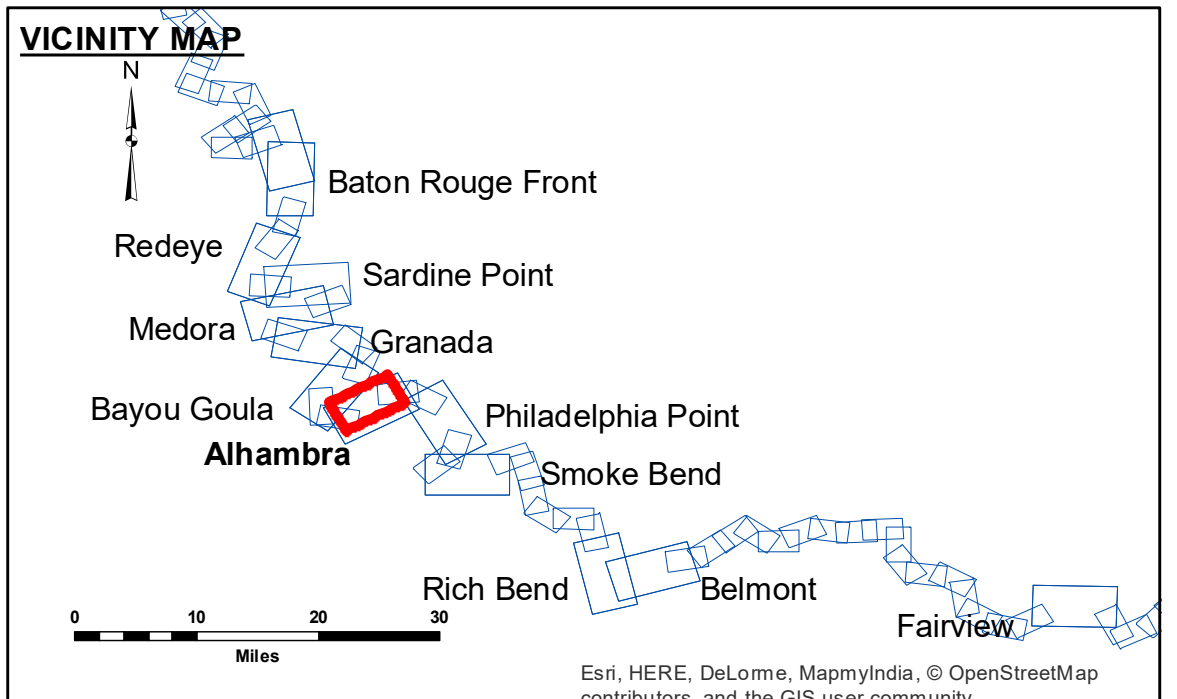


**DISCLAIMER:** The data represented on this map is the result of data collection performed for a specific US Army Corps of Engineers project. The data is only valid for its intended use, control, time and accuracy specifications. The user is responsible for the results of the application of the data for other than its intended purpose. Data Contaminants: Hydrographic survey data is subject to change rapidly due to several factors including but not limited to dredging operations, channel migration, and changes in bathymetry. The user is responsible for the results of the application of the data for other than its intended purpose. The information depicted on this map represents the results of a survey conducted on the date of the survey. The user is responsible for the results of the application of the data for other than its intended purpose.

U.S. ARMY CORPS OF ENGINEERS NEW ORLEANS DISTRICT		
Submitted:	Surveyed By: DS/PS	Plotted By: BD
Recommended: Chief Survey Section	Checked By: AC	
Approved:	Chief Waterways Maintenance Section	

**MISSISSIPPI RIVER - B.R. TO GULF  
ALHAMBRA RECON  
MR\_16\_ALH\_20171113\_CS  
13 November 2017**



LEGEND	
--- Federal Navigation Channel	● Cable Area
— Federal Navigation Center Line	■ Placement Area
— As-built Pipeline/Cable	□ Anchorage Area
..... Unconfirmed Pipeline/Cable	⊗ Obstruction Point
— Project Depth Contour	⚓ Wrecks-Submerged
□ Borrow Area	★ Beacon, General
● Shoalest Sounding**	◆ Red Navigation Buoy
★ Beacon, General	◆ Green Navigation Buoy
◆ Red Navigation Buoy	0' and above
◆ Green Navigation Buoy	0' to -5'
	-5' to -10'
	-10' to -20'
	-20' to -30'
	-30' to -35'
	-35' to -40'
	-40' to -45'
	-45' and below

LWRP: 1.7  
 Gage Reading: BR:13.29 D:7.88 USED:9.4 NGVD  
 Sea Conditions: CALM  
 Vessel Name: M/V LAFOURCHE  
 Survey Type: CONDITION  
 Sounding Frequency\*\*\*: HIGH

**NOTES:**

Horizontal Coordinate System:  
North American Datum of 1983 (NAD83), projected to the State Plane Coordinate System (SPCS), Louisiana South Zone. Distance units in U.S. Survey Feet.

Vertical Datum:  
Soundings are shown in feet and indicate depths below Low Water Reference Plane 2007 (NGVD).

Distances on the Mississippi River, above and below Head of Passes are shown at 1 mile intervals.

The location of navigation aids are base on and provided by the U.S. Coast Guard and USACE crew.

2010 Aerial Photography data source: NAIP, USDA-FSA-APFO Aerial Photography Field Office.

Reference is N.O.A. Navigation Chart No. 11370.

\*\* Shoalest Sounding per Quarter per Reach.

\*\*\* High frequency (200 kHz) survey data represents the first signal return at a sounding location and will include suspended solids, known as "fluff", if present. Low frequency (20 kHz) survey data normally penetrates through this "fluff" layer to depict elevations of consolidated bottom material. Low frequency accuracies may vary depending on channel conditions and fathometer settings.

**Sheet Reference Number  
16 of 97**