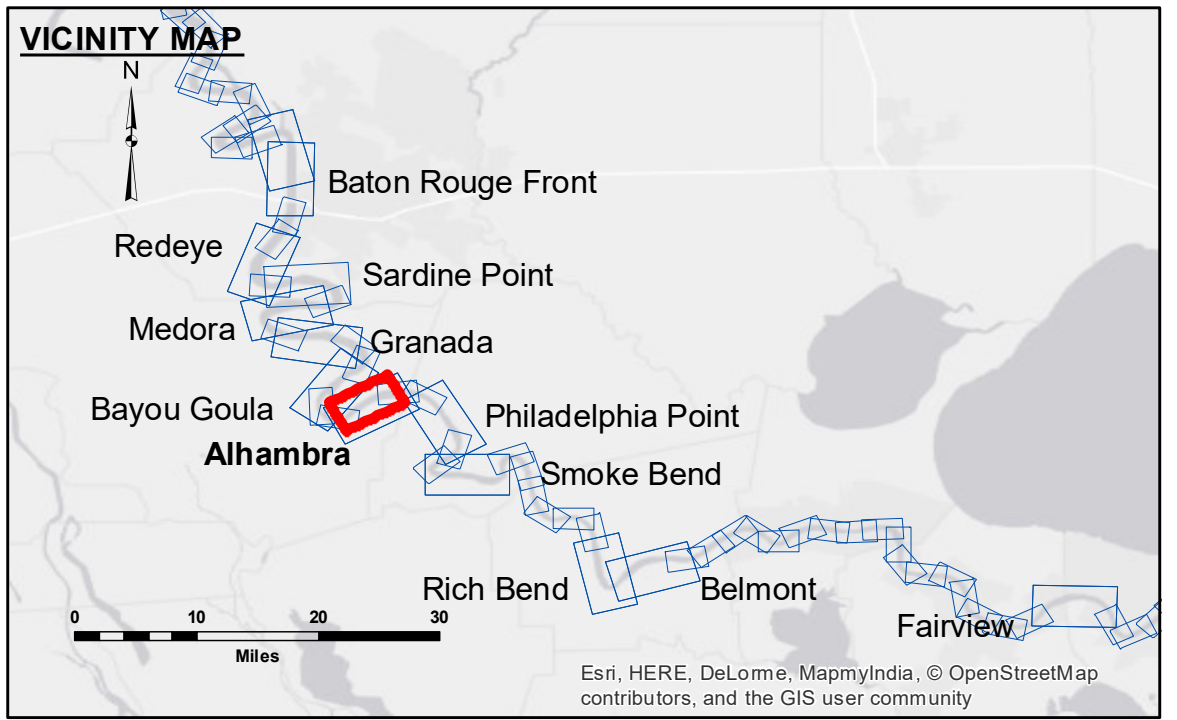




DISCLAIMER: The data represented on this map is the result of data collection performed for a specific US Army Corps of Engineers project and is only valid for its intended use. The user is responsible for the accuracy, reliability, usability or suitability for any particular purpose of the information. The user is advised to verify the accuracy, completeness, and timeliness of the information before using it for any purpose. The information depicted on this map represents the results of a survey conducted on the ground and is not intended to be used for any purpose other than that for which it was collected. The information is provided as a service to the user and is not intended to be used for any purpose other than that for which it was collected. The information is provided as a service to the user and is not intended to be used for any purpose other than that for which it was collected.

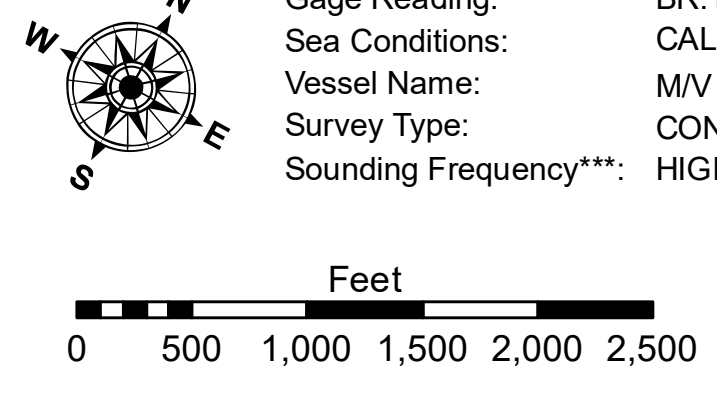
U.S. ARMY CORPS OF ENGINEERS NEW ORLEANS DISTRICT	
Submitted:	SR:JH
Recommended:	BD
Approved:	AO
Surveyed By:	SR:JH
Plotted By:	BD
Checked By:	AO

**MISSISSIPPI RIVER - B.R. TO GULF
ALHAMBRA RECON
MR_16_ALH_20180109_CS
09 January 2018**



LEGEND	
--- Federal Navigation Channel	○ Cable Area
— Federal Navigation Center Line	□ Placement Area
— As-built Pipeline/Cable	□ Anchorage Area
..... Unconfirmed Pipeline/Cable	⊗ Obstruction Point
— Project Depth Contour	✈ Wrecks-Submerged
□ Borrow Area	☆ Beacon, General
● Shoalest Sounding**	◆ Red Navigation Buoy
☆ Beacon, General	◆ Green Navigation Buoy

LWRP:	1.7
Gage Reading:	BR:14.79 D:8.45 USED: 10.3NGVD
Sea Conditions:	CALM
Vessel Name:	MV TECHE
Survey Type:	CONDITION
Sounding Frequency***:	HIGH



NOTES:
Horizontal Coordinate System: North American Datum of 1983 (NAD83), projected to the State Plane Coordinate System (SPCS), Louisiana South Zone. Distance units in U.S. Survey Feet.
Vertical Datum: Soundings are shown in feet and indicate depths below Low Water Reference Plane 2007 (NGVD).
Distances on the Mississippi River, above and below Head of Passes are shown at 1 mile intervals.
The location of navigation aids are based on and provided by the U.S. Coast Guard and USACE crew.
2010 Aerial Photography data source: NAIP, USDA-FSA-APFO Aerial Photography Field Office.
Reference is N.O.A. Navigation Chart No. 11370.
** Shoalest Sounding per Quarter per Reach.
*** High frequency (200 kHz) survey data represents the first signal return at a sounding location and will include suspended solids, known as "fluff", if present. Low frequency (20 kHz) survey data normally penetrates through this "fluff" layer to depict elevations of consolidated bottom material. Low frequency accuracies may vary depending on channel conditions and fathometer settings.

**Sheet Reference Number
16 of 97**