

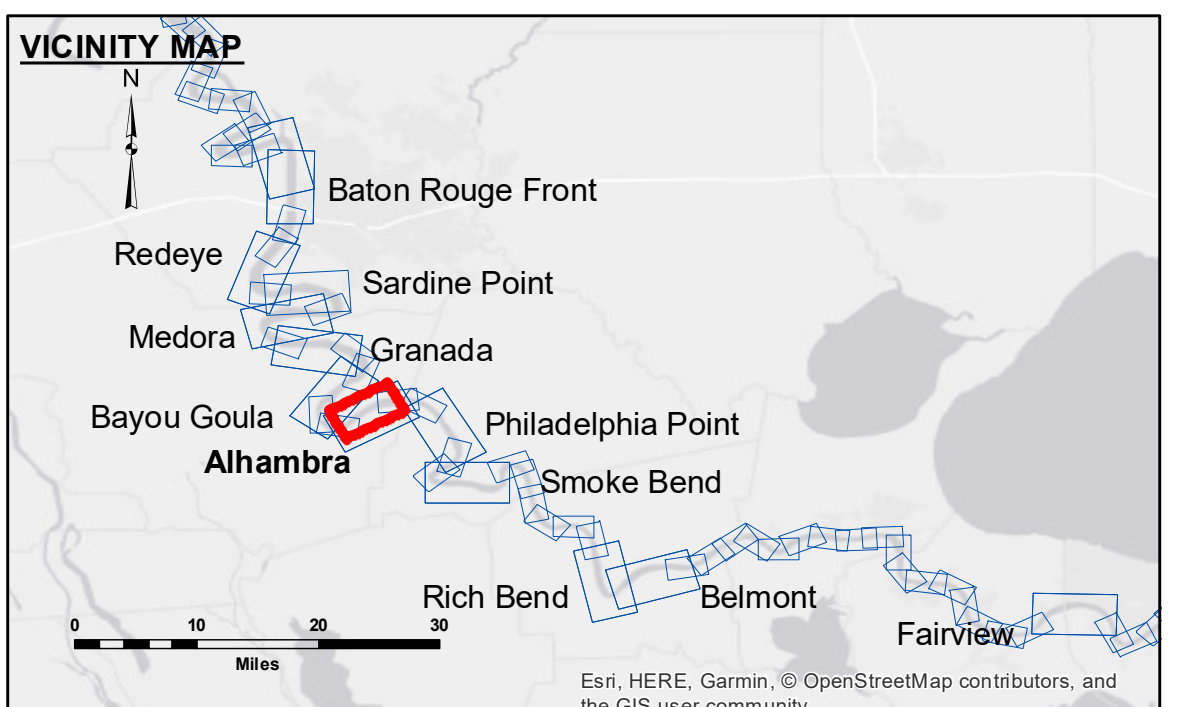
DISCLAIMER: The United States Government furnishes these data and the recipient accepts and uses them with the express understanding that the data are not warranted for any purpose other than that for which they were provided. The user is responsible for the results of any use of the data for other than the intended purpose. The information depicted on this map represents the results of a survey conducted on the date of the survey. The information is not to be used for any purpose other than that for which it was provided. The user is responsible for the results of any use of the data for other than the intended purpose. The information depicted on this map represents the results of a survey conducted on the date of the survey. The information is not to be used for any purpose other than that for which it was provided. The user is responsible for the results of any use of the data for other than the intended purpose.

Submitted:	Checked By:
Recommended:	Checked By:
Approved:	Checked By:

U.S. ARMY CORPS OF ENGINEERS
NEW ORLEANS DISTRICT

**MISSISSIPPI RIVER - B.R. TO GULF
ALHAMBRA RECON
MR_16_ALH_20190123_CS
23 January 2019**

**Sheet
Reference
Number
16 of 97**



LEGEND	
	Federal Navigation Channel
	Federal Navigation Center Line
	As-built Pipeline/Cable
	Unconfirmed Pipeline/Cable
	Project Depth Contour
	Cable Area
	Placement Area
	Anchorage Area
	Obstruction Point
	Wrecks-Submerged
	Borrow Area
	Shoalest Sounding**
	Beacon, General
	Red Navigation Buoy
	Green Navigation Buoy
	0' and above
	0' to -5'
	-5' to -10'
	-10' to -20'
	-20' to -30'
	-30' to -35'
	-35' to -40'
	-40' to 45'
	-45' and below

NOTES:

Horizontal Coordinate System:
North American Datum of 1983 (NAD83), projected to the State Plane Coordinate System (SPCS), Louisiana South Zone. Distance units in U.S. Survey Feet.

Vertical Datum:
Soundings are shown in feet and indicate depths below Low Water Reference Plane 2007 (NGVD).
Distances on the Mississippi River, above and below Head of Passes are shown at 1 mile intervals.

The location of navigation aids are base on and provided by the U.S. Coast Guard and USACE crew.
2015 Aerial Photography data source: NAIP, USDA-FSA-APFO Aerial Photography Field Office.
Reference is N.O.A. Navigation Chart No. 11370.
** Shoalest Sounding per Quarter per Reach.
*** High frequency (200 kHz) survey data represents the first signal return at a sounding location and will include suspended solids, known as "fluff", if present. Low frequency (20 kHz) survey data normally penetrates through this "fluff" layer to depict elevations of consolidated bottom material. Low frequency accuracies may vary depending on channel conditions and fathometer settings.

LWRP: 1.7
Gage Reading: BR:38.6 D:28.2 USED:31.2 NGVD
Sea Conditions: V ROUGH (WIND AND TUGS)
Vessel Name: OB189
Survey Type: CS
Sounding Frequency***: HIGH