

Access/Availability: The United States Government furnishes these data and the recipient accepts and uses them with the express understanding that they are for official use only and are not to be distributed, reproduced, or used for any purpose other than that for which they were provided. The user is responsible for the results of any use of these data for any purpose other than that for which they were provided. The user is responsible for the results of any use of these data for any purpose other than that for which they were provided.

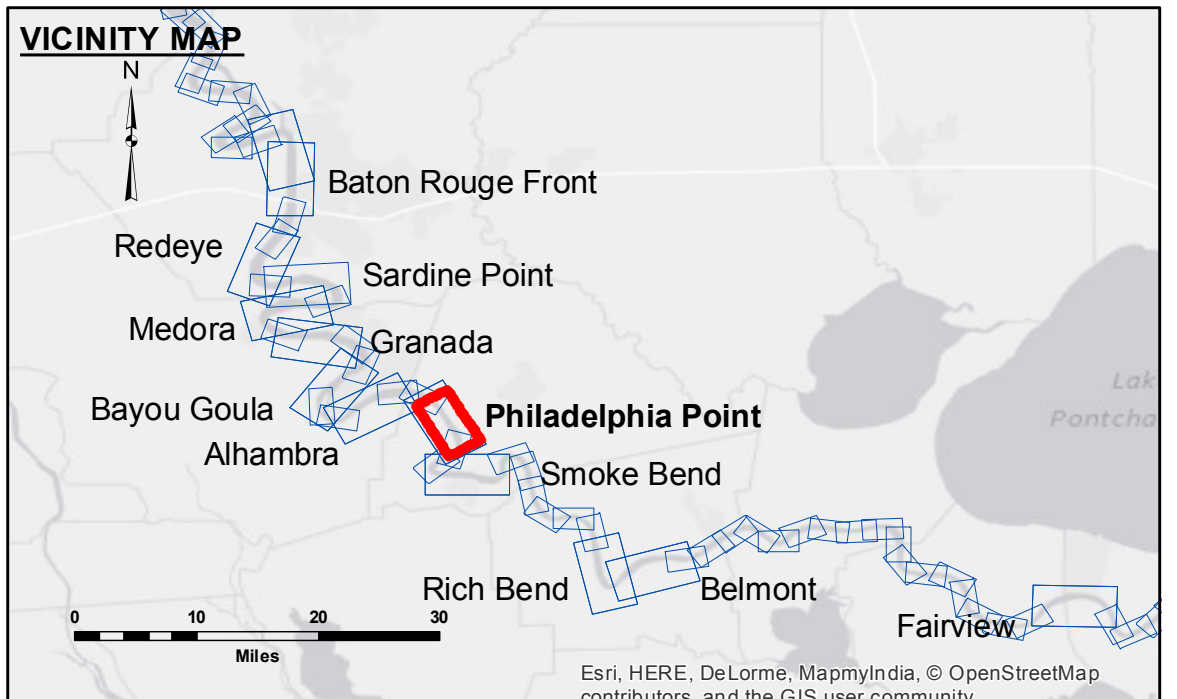
Distribution Liability: The data represents the results of data collection/processing for a specific US Army Corps of Engineers project. It is only valid for its intended use, content, time and accuracy specifications. The user is responsible for the results of any use of these data for any purpose other than that for which they were provided.

Data Accuracy: Hydrographic survey data is subject to change rapidly due to several factors including but not limited to dredging, sedimentation, and channel migration. The user is responsible for the results of any use of these data for any purpose other than that for which they were provided.

The information depicted on this map represents the results of a survey conducted on the date indicated. It is not to be considered a representation of the general condition existing at that time.

| | | |
|--|--------------|-------------|
| U.S. ARMY CORPS OF ENGINEERS NEW ORLEANS DISTRICT | | |
| Submitted: | Surveyed By: | Checked By: |
| Recommended: | DR,JA | MSK |
| Approved: | Plotted By: | |
| | BTD | |

**MISSISSIPPI RIVER - B.R. TO GULF
PHILADELPHIA POINT RECON
MR_19_PHP_20151027
27 October 2015**



| LEGEND | | 0' and above |
|----------------------------------|-------------------------|----------------|
| --- Federal Navigation Channel | ○ Cable Area | 0' to -5' |
| — Federal Navigation Center Line | □ Placement Area | -5' to -10' |
| — As-built Pipeline/Cable | □ Anchorage Area | -10' to -20' |
| Unconfirmed Pipeline/Cable | ✕ Obstruction Point | -20' to -30' |
| — Project Depth Contour | ★ Beacon, General | -30' to -35' |
| | ◆ Red Navigation Buoy | -35' to -40' |
| | ◆ Green Navigation Buoy | -40' to 45' |
| | | -45' and below |
| | □ Borrow Area | |
| | ● Shoalest Sounding** | |
| | ◆ Wrecks-Submerged | |

NOTES:

Horizontal Coordinate System:
North American Datum of 1983 (NAD83), projected to the State Plane Coordinate System (SPCS), Louisiana South Zone. Distance units in U.S. Survey Feet.

Vertical Datum:
Soundings are shown in feet and indicate depths below Low Water Reference Plane 2007 (NGVD).

Distances on the Mississippi River, above and below Head of Passes are shown at 1 mile intervals.

The location of navigation aids are based on and provided by the U.S. Coast Guard and USACE crew.

2010 Aerial Photography data source: NAIP, USDA-FSA-APFO Aerial Photography Field Office.

Reference is N.O.A.A. Navigation Chart No. 11370.

** Shoalest Sounding per Quarter per Reach.

*** High frequency (200 kHz) survey data represents the first signal return at a sounding location and will include suspended solids, known as "fluff", if present. Low frequency (20 kHz) survey data normally penetrates through this "fluff" layer to depict elevations of consolidated bottom material. Low frequency accuracies may vary depending on channel conditions and bathymeter settings.

LWRP: 1.5
Gage Reading: BR:10.5 D:7.53 USED:8.00 NGVD
Sea Conditions: CALM
Vessel Name: OB-189
Survey Type: CONDITION
Sounding Frequency***: HIGH

Feet
0 500 1,000 1,500 2,000 2,500

**Sheet Reference Number
19 of 97**