

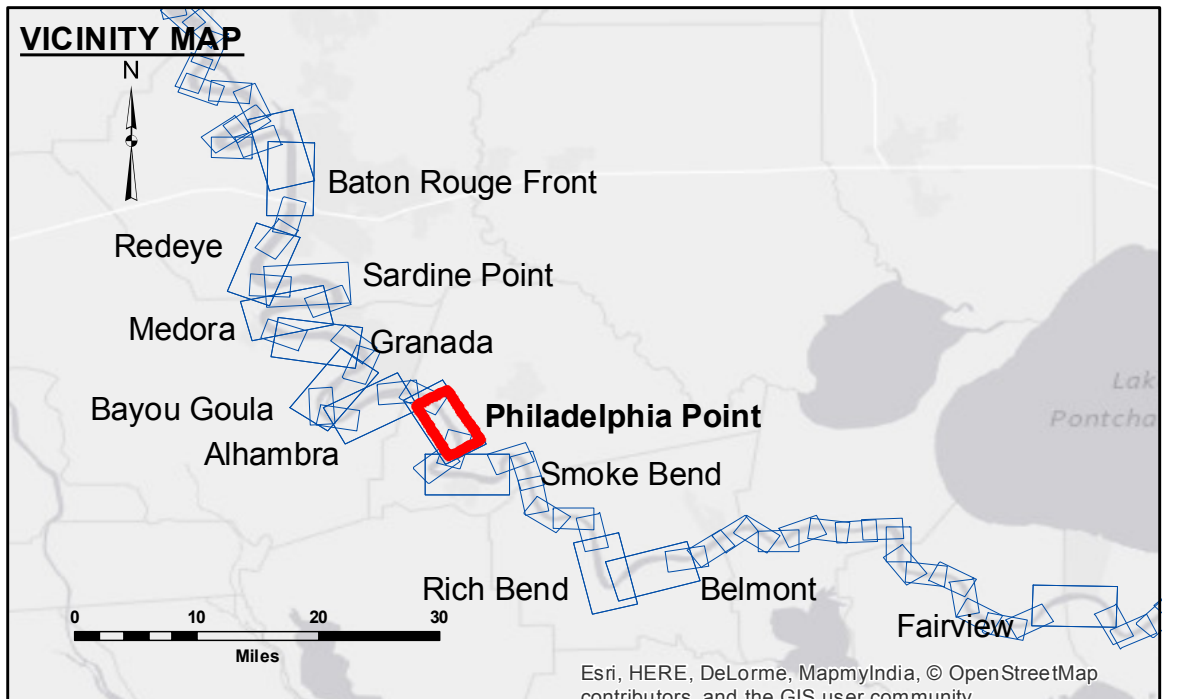
Access/Availability: The United States Government furnishes these data and the recipient accepts and uses them with the express understanding that they are for official use only and are not to be distributed, copied, or reproduced in any form for any purpose other than that for which they were originally prepared. The user is responsible for the results of any use of these data for any purpose other than that for which they were originally prepared. The application of the data for other than its intended purpose is at the user's risk.

Disclaimer: Hydrographic survey data is subject to change rapidly due to several factors including but not limited to dredging, sedimentation, and channel migration. The user is responsible for the results of any use of these data for any purpose other than that for which they were originally prepared. The application of the data for other than its intended purpose is at the user's risk.

Product Maintenance: The information depicted on this map represents the results of a survey conducted on the date of the survey. The user is responsible for the results of any use of these data for any purpose other than that for which they were originally prepared. The application of the data for other than its intended purpose is at the user's risk.

U.S. ARMY CORPS OF ENGINEERS NEW ORLEANS DISTRICT	
Submitted:	DR,JA
Recommended:	AO
Checked By:	ML

**MISSISSIPPI RIVER - B.R. TO GULF
PHILADELPHIA POINT RECON
MR_19_PHP_20151202
02 December 2015**



LEGEND	
--- Federal Navigation Channel	0' and above
— Federal Navigation Center Line	0' to -5'
— As-built Pipeline/Cable	-5' to -10'
..... Unconfirmed Pipeline/Cable	-10' to -20'
— Project Depth Contour	-20' to -30'
○ Cable Area	-30' to -35'
□ Placement Area	-35' to -40'
□ Anchorage Area	-40' to 45'
⊗ Obstruction Point	-45' and below
★ Beacon, General	
◆ Red Navigation Buoy	
◆ Green Navigation Buoy	
□ Borrow Area	
● Shoalest Sounding**	
★ Wrecks-Submerged	

LWRP: 1.5
 Gage Reading: BR:23.0D:15.7 USED:16.7 NGVD
 Sea Conditions: CALM
 Vessel Name: M/V OB189
 Survey Type: CONDITION
 Sounding Frequency***: HIGH

0 500 1,000 1,500 2,000 2,500
 Feet

NOTES:

Horizontal Coordinate System:
North American Datum of 1983 (NAD83), projected to the State Plane Coordinate System (SPCS), Louisiana South Zone. Distance units in U.S. Survey Feet.

Vertical Datum:
Soundings are shown in feet and indicate depths below Low Water Reference Plane 2007 (NGVD).

Distances on the Mississippi River, above and below Head of Passes are shown at 1 mile intervals.

The location of navigation aids are based on and provided by the U.S. Coast Guard and USACE crew.

2010 Aerial Photography data source: NAIP, USDA-FSA-APFO Aerial Photography Field Office.

Reference is N.O.A. Navigation Chart No. 11370.

** Shoalest Sounding per Quarter per Reach.

*** High frequency (200 kHz) survey data represents the first signal return at a sounding location and will include suspended solids, known as "fluff", if present. Low frequency (20 kHz) survey data normally penetrates through this "fluff" layer to depict elevations of consolidated bottom material. Low frequency accuracies may vary depending on channel conditions and fathometer settings.

**Sheet Reference Number
19 of 97**