

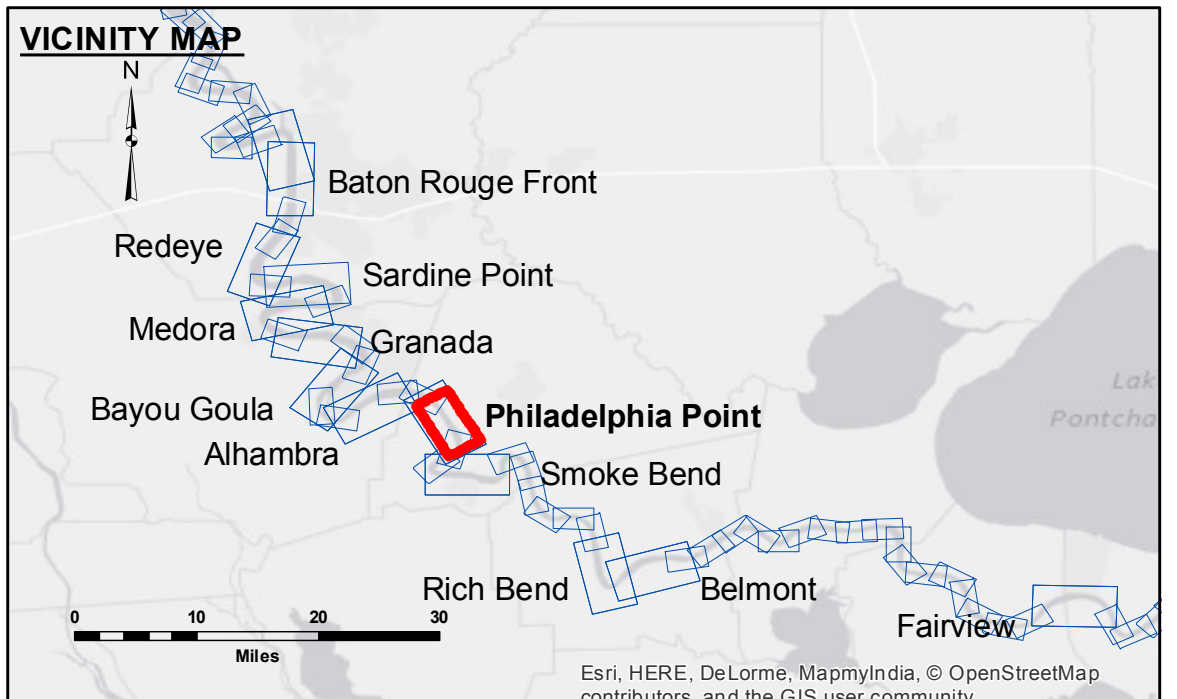
DISCLAIMER
 The United States Government furnishes this data and the recipient accepts and uses them with the express understanding that the data is provided for informational purposes only and is not intended for use in any other manner. The user is responsible for the accuracy, reliability, usability or suitability for any particular purpose of the data. The user shall indemnify and hold the United States Government harmless from and against all claims, damages, costs and expenses, including reasonable attorneys' fees, incurred by the United States Government as a result of the use of the data for any purpose other than that intended by the United States Government. The recipient may not transfer, disseminate, or use the data for any purpose other than that intended by the United States Government. The information depicted on this map represents the results of a survey conducted by the United States Army Corps of Engineers and is not intended to represent the general condition existing at that time.

Submitted:	DR,JA
Recommended:	BTD
Checked By:	MSK

U.S. ARMY CORPS OF ENGINEERS
 NEW ORLEANS DISTRICT

**MISSISSIPPI RIVER - B.R. TO GULF
 PHILADELPHIA POINT RECON
 MR_19_PHP_20160219
 19 February 2016**

Sheet Reference Number
19 of 97



LEGEND	
--- Federal Navigation Channel	● Cable Area
— Federal Navigation Center Line	■ Placement Area
— As-built Pipeline/Cable	□ Anchorage Area
..... Unconfirmed Pipeline/Cable	⊗ Obstruction Point
— Project Depth Contour	✈ Wrecks-Submerged
□ Borrow Area	★ Beacon, General
● Shoalest Sounding**	◆ Red Navigation Buoy
◆ Green Navigation Buoy	

NOTES:

Horizontal Coordinate System:
 North American Datum of 1983 (NAD83), projected to the State Plane Coordinate System (SPCS), Louisiana South Zone. Distance units in U.S. Survey Feet.

Vertical Datum:
 Soundings are shown in feet and indicate depths below Low Water Reference Plane 2007 (NGVD).
 Distances on the Mississippi River, above and below Head of Passes are shown at 1 mile intervals.

The location of navigation aids are base on and provided by the U.S. Coast Guard and USACE crew.
 2010 Aerial Photography data source: NAIP, USDA-FSA-APFO Aerial Photography Field Office.

Reference is N.O.A.A. Navigation Chart No. 11370.
 ** Shoalest Sounding per Quarter per Reach.

*** High frequency (200 kHz) survey data represents the first signal return at a sounding location and will include suspended solids, known as "fluff", if present. Low frequency (20 kHz) survey data normally penetrates through this "fluff" layer to depict elevations of consolidated bottom material. Low frequency accuracies may vary depending on channel conditions and bathymeter settings.

LWRP: 1.5
 Gage Reading: BR:30.85 D:21.45 USED:22.80 NGVD
 Sea Conditions: CALM
 Vessel Name: OB-189
 Survey Type: CONDITION
 Sounding Frequency***: HIGH

Feet
 0 500 1,000 1,500 2,000 2,500