

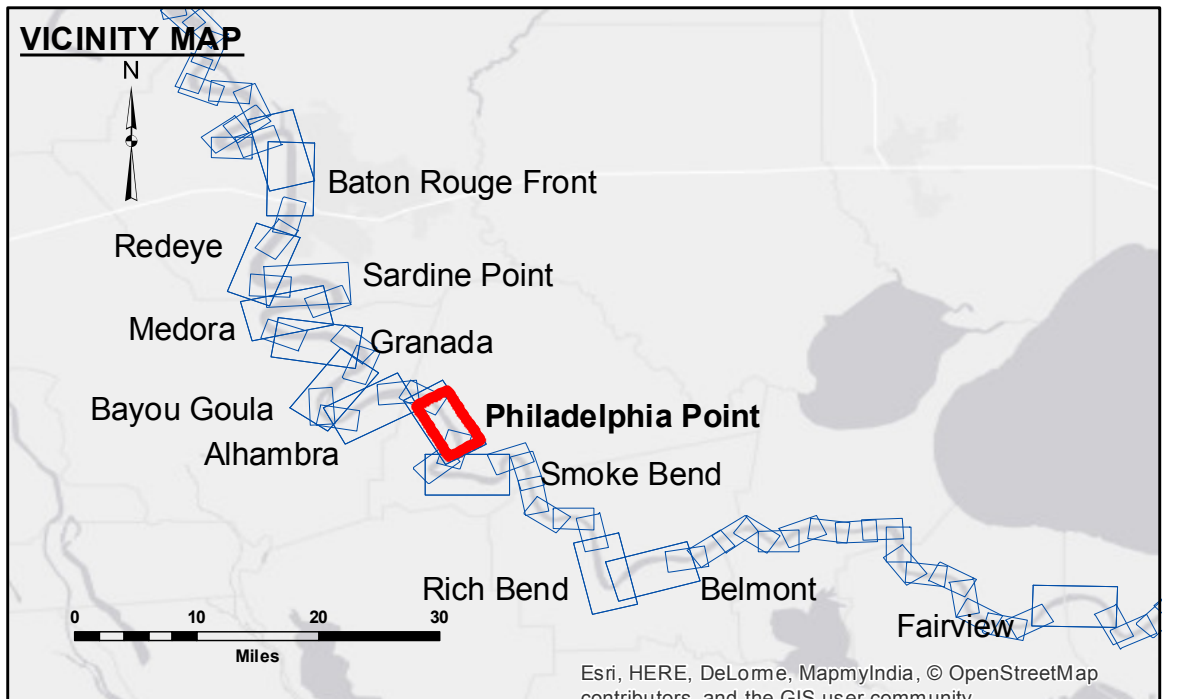
Access/Availability: The United States Government furnishes these data and the recipient accepts and uses them with the express understanding that the data are not to be used for any purpose other than that for which they were originally collected, and that the data are not to be used for any purpose other than that for which they were originally collected.

Distribution Liability: The data represents the results of data collection processing for a specific US Army Corps of Engineers project. The data is not to be used for any purpose other than that for which it was originally collected. The user is responsible for the results of the data. The application of the data for other than its intended purpose is not warranted.

Data Accuracy: Hydrographic survey data is subject to change rapidly due to several factors including but not limited to dredging, sedimentation, and other factors. The data is not to be used for any purpose other than that for which it was originally collected. The user is responsible for the results of the data. The application of the data for other than its intended purpose is not warranted.

Submitted:	SPS/DJS	Plotted By:	BD	Checked By:	AC
Recommended:	Chet, Survey Section				
Approved:	Chet, Waterways Maintenance Section				

MISSISSIPPI RIVER - B.R. TO GULF PHILADELPHIA POINT RECON
MR_19_PHP_20161004
04 October 2016



LEGEND		SOUNDING DEPTHS	
--- Federal Navigation Channel	○ Cable Area	Green	0' and above
— Federal Navigation Center Line	□ Placement Area	Yellow	0' to -5'
— As-built Pipeline/Cable	□ Anchorage Area	Orange	-5' to -10'
..... Unconfirmed Pipeline/Cable	⊗ Obstruction Point	Light Blue	-10' to -20'
— Project Depth Contour	★ Beacon, General	Blue	-20' to -30'
	◆ Red Navigation Buoy	Dark Blue	-30' to -35'
	◆ Green Navigation Buoy	Pink	-35' to -40'
		White	-40' to 45'
			-45' and below

NOTES:

Horizontal Coordinate System:
 North American Datum of 1983 (NAD83), projected to the State Plane Coordinate System (SPCS), Louisiana South Zone. Distance units in U.S. Survey Feet.

Vertical Datum:
 Soundings are shown in feet and indicate depths below Low Water Reference Plane 2007 (NGVD).

Distances on the Mississippi River, above and below Head of Passes are shown at 1 mile intervals.

The location of navigation aids are base on and provided by the U.S. Coast Guard and USACE crew.

2010 Aerial Photography data source: NAIP, USDA-FSA-APFO Aerial Photography Field Office.

Reference is N.O.A. Navigation Chart No. 11370.

** Shoalest Sounding per Quarter per Reach.

*** High frequency (200 kHz) survey data represents the first signal return at a sounding location and will include suspended solids, known as "fluff", if present. Low frequency (20 kHz) survey data normally penetrates through this "fluff" layer to depict elevations of consolidated bottom material. Low frequency accuracies may vary depending on channel conditions and fathometer settings.

LWRP: 1.5
 Gage Reading: BR:15.6 D:9.0 USED:9.9 NGVD
 Sea Conditions: CALM
 Vessel Name: M/V LAFOURCHE
 Survey Type: CONDITION
 Sounding Frequency***: HIGH

Feet
 0 500 1,000 1,500 2,000 2,500

Sheet Reference Number
19 of 97