

**Access Notes:** The United States Government furnishes these data and the recipient accepts and uses them with the express understanding that the data are not to be used for any purpose other than that for which they were originally collected, and that the data are not to be used for any purpose other than that for which they were originally collected.

**Distribution Liability:** The data represents the results of data collection processing for a specific US Army Corps of Engineers project. The data is only valid for its intended use, control, time and accuracy specifications. The user is responsible for the results of the data. The application of the data for other than its intended purpose is at the user's risk.

**Data Contents:** Hydrographic survey data is subject to change rapidly due to several factors including but not limited to dredging, sedimentation, and channel migration. The data is not to be used for navigation purposes. The user is responsible for the results of the data. The application of the data for other than its intended purpose is at the user's risk.

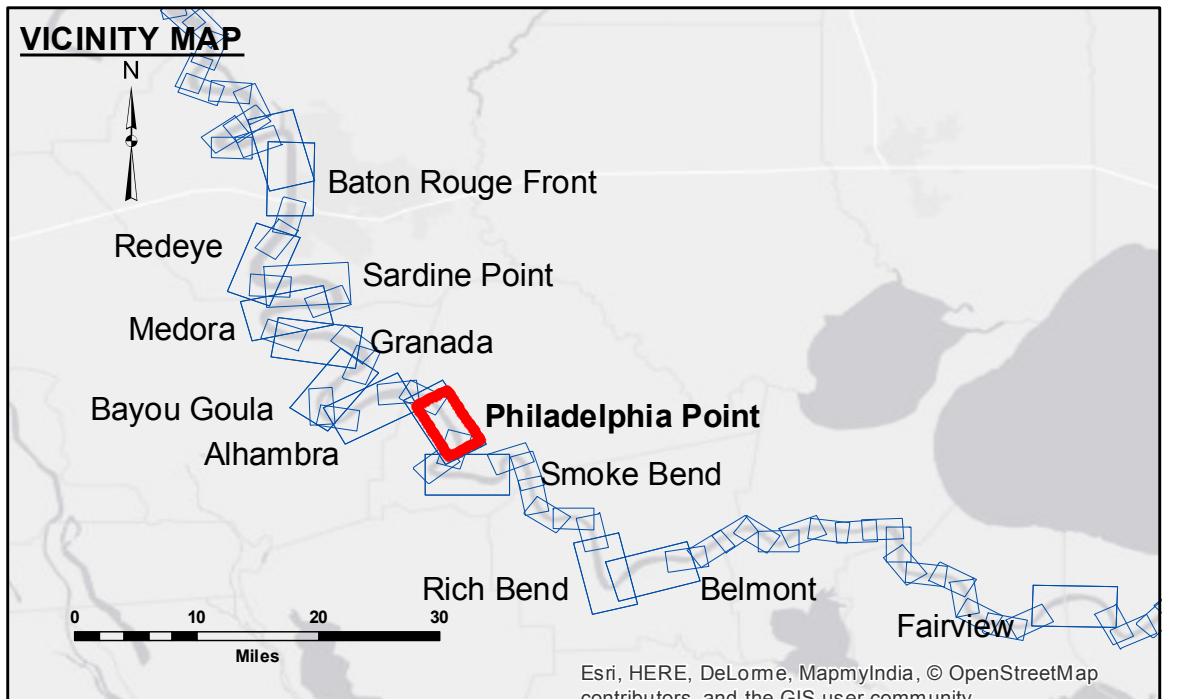
The information depicted on this map represents the results of a survey conducted on the ground. The data is not to be used for navigation purposes. The user is responsible for the results of the data. The application of the data for other than its intended purpose is at the user's risk.

U.S. ARMY CORPS OF ENGINEERS NEW ORLEANS DISTRICT	
Submitted:	Surveyed By: SPS,JH
Recommended:	Plotted By: AO
Approved:	Checked By: AO

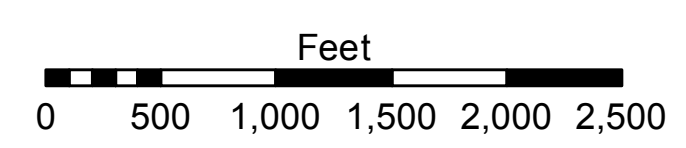
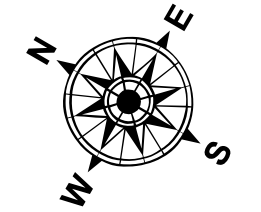
**MISSISSIPPI RIVER - B.R. TO GULF  
PHILADELPHIA POINT RECON  
MR\_19\_PHP\_20161129  
29 November 2016**

**Sheet Reference Number  
19 of 97**

Revision Number:  
3.8.9-20150202



LEGEND		0' and above	
--- Federal Navigation Channel	○ Cable Area	■ 0' to -5'	LWRP: Gage Reading: Sea Conditions: Vessel Name: Survey Type: Sounding Frequency***: HIGH
— Federal Navigation Center Line	□ Placement Area	■ -5' to -10'	
— As-built Pipeline/Cable	□ Anchorage Area	■ -10' to -20'	
..... Unconfirmed Pipeline/Cable	⊗ Obstruction Point	■ -20' to -30'	
— Project Depth Contour	★ Beacon, General	■ -30' to -35'	
	◆ Red Navigation Buoy	■ -35' to -40'	
	◆ Wrecks-Submerged	■ -40' to 45'	
	◆ Green Navigation Buoy	■ -45' and below	
	□ Borrow Area		
	● Shoalest Sounding**		



**NOTES:**

Horizontal Coordinate System:  
North American Datum of 1983 (NAD83), projected to the State Plane Coordinate System (SPCS), Louisiana South Zone. Distance units in U.S. Survey Feet.

Vertical Datum:  
Soundings are shown in feet and indicate depths below Low Water Reference Plane 2007 (NGVD).

Distances on the Mississippi River, above and below Head of Passes are shown at 1 mile intervals.

The location of navigation aids are base on and provided by the U.S. Coast Guard and USACE crew.

2010 Aerial Photography data source: NAIP, USDA-FSA-APFO Aerial Photography Field Office.

Reference is N.O.A. Navigation Chart No. 11370.

\*\* Shoalest Sounding per Quarter per Reach.

\*\*\* High frequency (200 kHz) survey data represents the first signal return at a sounding location and will include suspended solids, known as "fluff", if present. Low frequency (20 kHz) survey data normally penetrates through this "fluff" layer to depict elevations of consolidated bottom material. Low frequency accuracies may vary depending on channel conditions and fathometer settings.

Esri, HERE, DeLorme, MapmyIndia, © OpenStreetMap contributors, and the GIS user community