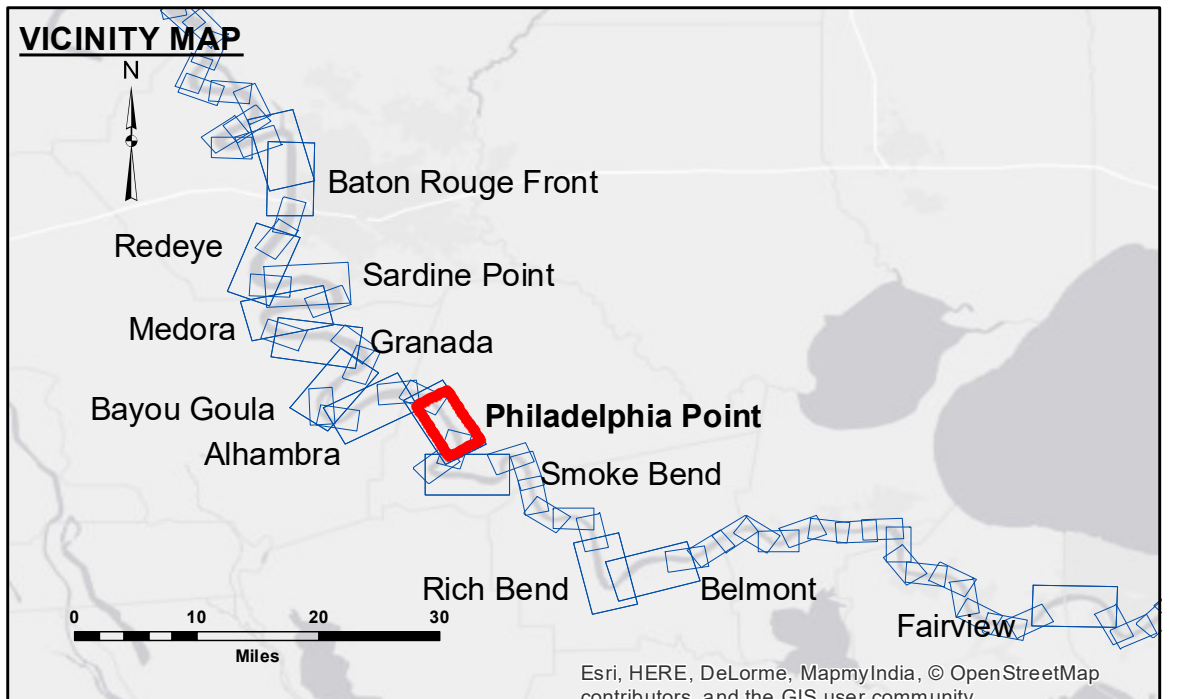


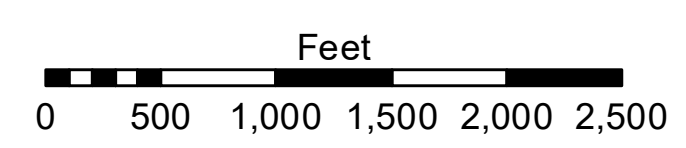
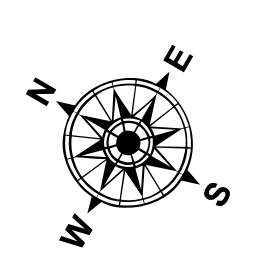
**DISCLAIMER**  
 The United States Government furnishes these data and the recipient accepts and uses them with the express understanding that the data are not to be used for any purpose other than that for which they were originally collected, and that the data are not to be used for any purpose other than that for which they were originally collected, and that the data are not to be used for any purpose other than that for which they were originally collected.

Submitted:	Recommended:	Approved:
DS/JA	MS	MS
U.S. ARMY CORPS OF ENGINEERS NEW ORLEANS DISTRICT		

**MISSISSIPPI RIVER - B.R. TO GULF  
 PHILADELPHIA POINT RECON  
 MR\_19\_PHP\_20180727\_CS  
 27 July 2018**



LEGEND		SOUNDING DEPTHS	
--- Federal Navigation Channel	○ Cable Area	0' and above	0' to -5'
— Federal Navigation Center Line	□ Placement Area	-5' to -10'	-10' to -20'
— As-built Pipeline/Cable	□ Anchorage Area	-20' to -30'	-30' to -35'
..... Unconfirmed Pipeline/Cable	⊗ Obstruction Point	-35' to -40'	-40' to -45'
— Project Depth Contour	⚓ Wrecks-Submerged	-45' and below	
	□ Borrow Area		
	● Shoalest Sounding**		
	☆ Beacon, General		
	◆ Red Navigation Buoy		
	◆ Green Navigation Buoy		



LWRP: 1.5  
 Gage Reading: BR:14.65 D:8.19 USED:9.1 NGVD  
 Sea Conditions: SMOOTH  
 Vessel Name: OB-189  
 Survey Type: CONDITION  
 Sounding Frequency\*\*\*: HIGH

**NOTES:**  
 Horizontal Coordinate System: North American Datum of 1983 (NAD83), projected to the State Plane Coordinate System (SPCS), Louisiana South Zone. Distance units in U.S. Survey Feet.  
 Vertical Datum: Soundings are shown in feet and indicate depths below Low Water Reference Plane 2007 (NGVD).  
 Distances on the Mississippi River, above and below Head of Passes are shown at 1 mile intervals.  
 The location of navigation aids are based on and provided by the U.S. Coast Guard and USACE crew.  
 2015 Aerial Photography data source: NAIP, USDA-FSA-APFO Aerial Photography Field Office.  
 Reference is N.O.A.A. Navigation Chart No. 11370.  
 \*\* Shoalest Sounding per Quarter per Reach.  
 \*\*\* High frequency (200 kHz) survey data represents the first signal return at a sounding location and will include suspended solids, known as "fluff", if present. Low frequency (20 kHz) survey data normally penetrates through this "fluff" layer to depict elevations of consolidated bottom material. Low frequency accuracies may vary depending on channel conditions and bathymeter settings.

**Sheet Reference Number  
 19 of 97**