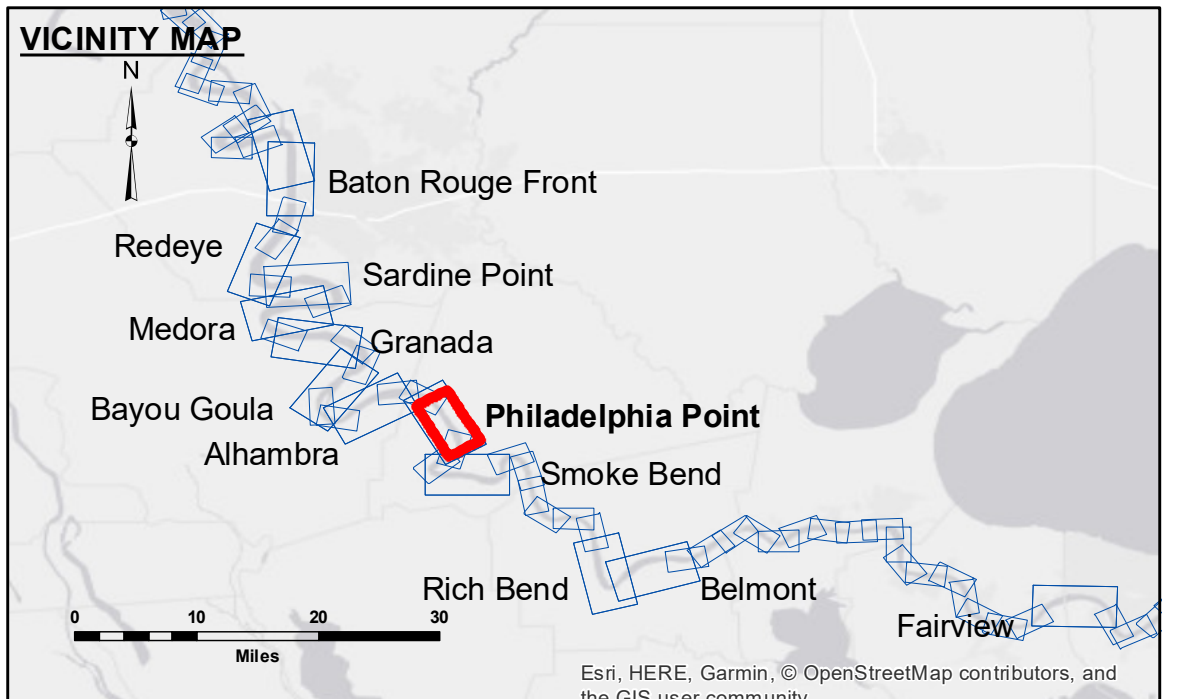


**DISCLAIMER:** The United States Government furnishes these data and the recipient accepts and uses them with the express understanding that the data are not intended for use in any way other than the specific purpose for which they were provided. The user is responsible for the results of the application of the data for other than its intended purpose. Data Contaminants: Hydrographic survey data is subject to change rapidly due to several factors including but not limited to dredging, sedimentation, and channel migration. The user is responsible for the results of the application of the data for other than its intended purpose. The information depicted on this map represents the results of a survey conducted on the date of the survey. The user is responsible for the results of the application of the data for other than its intended purpose.

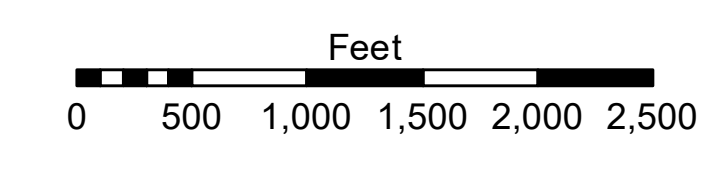
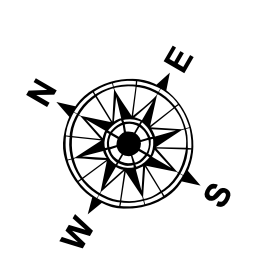
Submitted:	Surveyed By:	DS/PS
Recommended:	Plotted By:	AO
Approved:	Checked By:	AO

U.S. ARMY CORPS OF ENGINEERS  
NEW ORLEANS DISTRICT

**MISSISSIPPI RIVER - B.R. TO GULF  
PHILADELPHIA POINT RECON  
MR\_19\_PHP\_20180815\_CS  
15 August 2018**



LEGEND		
--- Federal Navigation Channel	● Cable Area	■ Borrow Area
— Federal Navigation Center Line	□ Placement Area	● Shoalest Sounding**
— As-built Pipeline/Cable	□ Anchorage Area	☆ Beacon, General
..... Unconfirmed Pipeline/Cable	⊗ Obstruction Point	◆ Red Navigation Buoy
— Project Depth Contour	✶ Wrecks-Submerged	◆ Green Navigation Buoy
		0' and above
		0' to -5'
		-5' to -10'
		-10' to -20'
		-20' to -30'
		-30' to -35'
		-35' to -40'
		-40' to -45'
		-45' and below



LWRP: 1.5  
Gage Reading: BR:11.2D:6.2 USED:6.9 NGVD  
Sea Conditions: SMOOTH  
Vessel Name: LAFORUCHE  
Survey Type: CS  
Sounding Frequency\*\*\*: HIGH

**NOTES:**  
Horizontal Coordinate System:  
North American Datum of 1983 (NAD83), projected to the State Plane Coordinate System (SPCS), Louisiana South Zone. Distance units in U.S. Survey Feet.  
Vertical Datum:  
Soundings are shown in feet and indicate depths below Low Water Reference Plane 2007 (NGVD).  
Distances on the Mississippi River, above and below Head of Passes are shown at 1 mile intervals.  
The location of navigation aids are base on and provided by the U.S. Coast Guard and USACE crew.  
2015 Aerial Photography data source: NAIP, USDA-FSA-APFO Aerial Photography Field Office.  
Reference is N.O.A. Navigation Chart No. 11370.  
\*\* Shoalest Sounding per Quarter per Reach.  
\*\*\* High frequency (200 kHz) survey data represents the first signal return at a sounding location and will include suspended solids, known as "fluff", if present. Low frequency (20 kHz) survey data normally penetrates through this "fluff" layer to depict elevations of consolidated bottom material. Low frequency accuracies may vary depending on channel conditions and fathometer settings.

**Sheet Reference Number  
19 of 97**