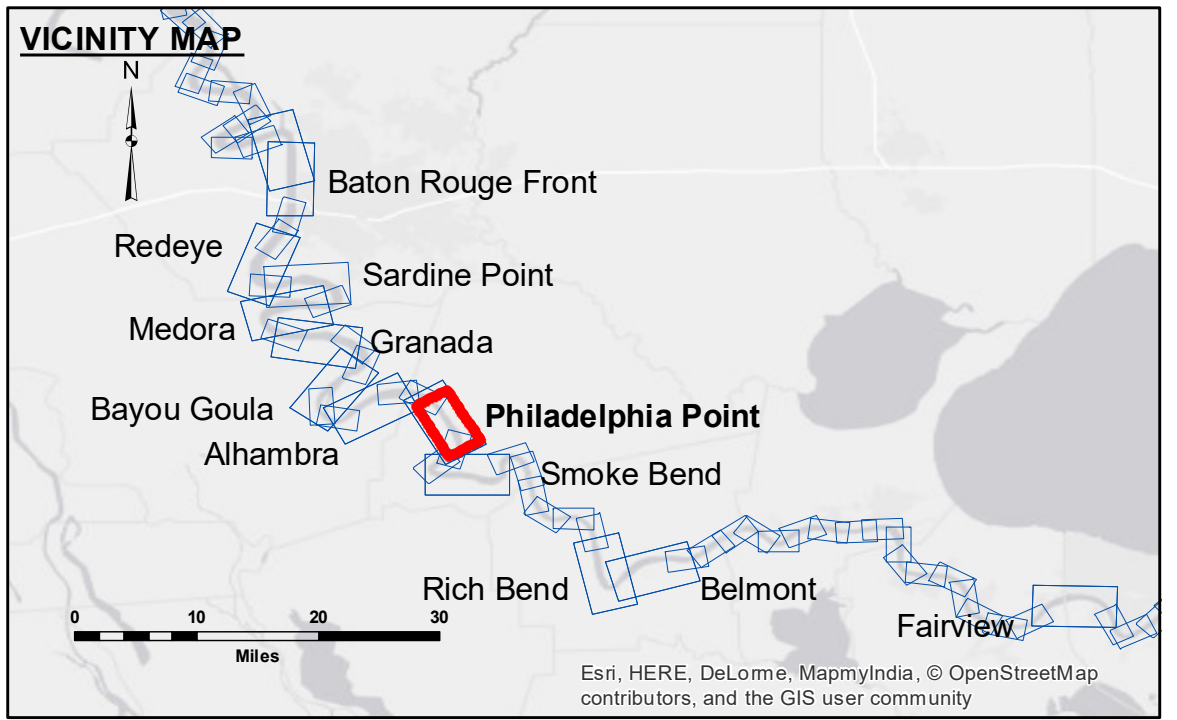


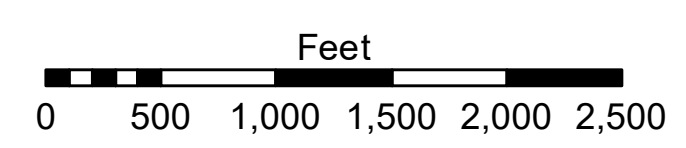
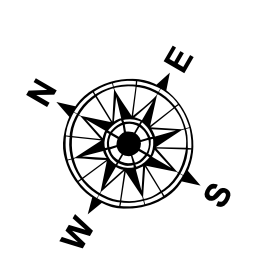
**DISCLAIMER:** The United States Government furnishes these data and the recipient accepts and uses them with the express understanding that the data are not intended for navigation, and that the user is responsible for the accuracy, completeness, reliability, usability or suitability for any particular purpose of the data. The data are provided "as is" and the user is not to be held liable by the Government. Therefore, the Government provides this information "as is" and does not warrant, represent or guarantee the accuracy, completeness, reliability, usability or suitability of the data. The information depicted on this map represents the results of a survey conducted on the ground and is not intended to be used for navigation. The information is provided for informational purposes only. The user is responsible for the accuracy, completeness, reliability, usability or suitability of the data. The information depicted on this map represents the results of a survey conducted on the ground and is not intended to be used for navigation. The information is provided for informational purposes only. The user is responsible for the accuracy, completeness, reliability, usability or suitability of the data.

U.S. ARMY CORPS OF ENGINEERS NEW ORLEANS DISTRICT		
Submitted:	Surveyed By: D/S/S/P	Plotted By: BD
Recommended: Chief Survey Section	Checked By: AC	
Approved:	Chief Waterways Maintenance Section	

**MISSISSIPPI RIVER - B.R. TO GULF  
PHILADELPHIA POINT RECON  
MR\_19\_PHP\_20190312\_CS  
12 March 2019**



LEGEND		
Federal Navigation Channel	Cable Area	Borrow Area
Federal Navigation Center Line	Placement Area	Shoalest Sounding**
As-built Pipeline/Cable	Anchorage Area	Beacon, General
Unconfirmed Pipeline/Cable	Obstruction Point	Red Navigation Buoy
Project Depth Contour	Wrecks-Submerged	Green Navigation Buoy
		0' and above
		0' to -5'
		-5' to -10'
		-10' to -20'
		-20' to -30'
		-30' to -35'
		-35' to -40'
		-40' to 45'
		-45' and below



LWRP: 1.5  
 Gage Reading: BR:43.89 D:31.75 USED:33.5 NGVD  
 Sea Conditions: CALM  
 Vessel Name: M/V LAFORCHE  
 Survey Type: CONDITION  
 Sounding Frequency\*\*\*: HIGH

**NOTES:**  
 Horizontal Coordinate System: North American Datum of 1983 (NAD83), projected to the State Plane Coordinate System (SPCS), Louisiana South Zone. Distance units in U.S. Survey Feet.  
 Vertical Datum: Soundings are shown in feet and indicate depths below Low Water Reference Plane 2007 (NGVD).  
 Distances on the Mississippi River, above and below Head of Passes are shown at 1 mile intervals.  
 The location of navigation aids are base on and provided by the U.S. Coast Guard and USACE crew.  
 2015 Aerial Photography data source: NAIP, USDA-FSA-APFO Aerial Photography Field Office.  
 Reference is N.O.A. Navigation Chart No. 11370.  
 \*\* Shoalest Sounding per Quarter per Reach.  
 \*\*\* High frequency (200 kHz) survey data represents the first signal return at a sounding location and will include suspended solids, known as "fluff", if present. Low frequency (20 kHz) survey data normally penetrates through this "fluff" layer to depict elevations of consolidated bottom material. Low frequency accuracies may vary depending on channel conditions and fathometer settings.

**Sheet Reference Number  
19 of 97**