

Access and Distribution: The United States Government furnishes these data and the recipient accepts and uses them with the express understanding that they are for official use only and that no warranty is made for their use for any purpose other than that intended by the Government. The user is responsible for the results obtained from their use. The data are not to be retransmitted, sold, or otherwise made available to the public.

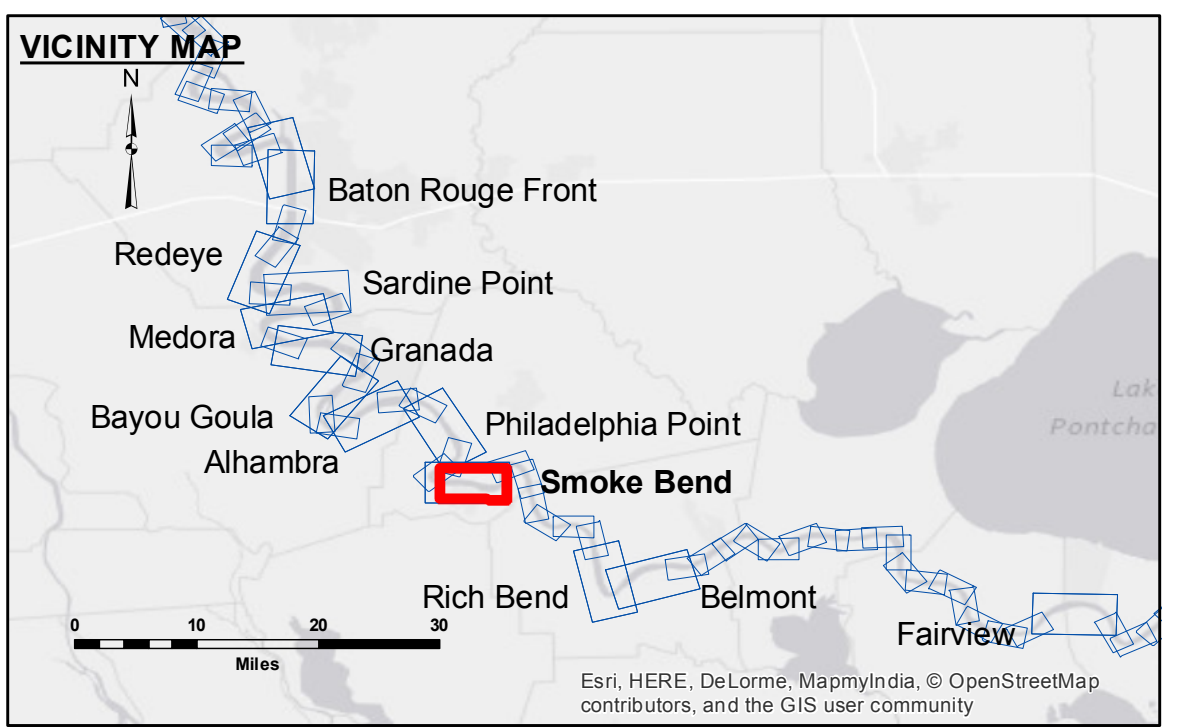
Disclaimer: The information depicted on this map represents the results of a survey conducted for the purpose of maintaining the Mississippi River. The Corps of Engineers does not assume responsibility for changes in the hydrographical conditions which develop after the date of the survey. The Corps of Engineers does not assume responsibility for the use of these data for purposes other than those intended. The Corps of Engineers does not assume responsibility for the use of these data for purposes other than those intended.

Submitted:	Surveyed By: SPPS
Recommended:	Plotted By: BITD
Approved:	Checked By: MSK

U.S. ARMY CORPS OF ENGINEERS
NEW ORLEANS DISTRICT

**MISSISSIPPI RIVER - B.R. TO GULF
SMOKE BEND RECON
MR_22_SMB_20151007
07 October 2015**

**Sheet Reference Number
22 of 97**



LEGEND

--- Federal Navigation Channel	● Cable Area	□ Borrow Area	0' and above
— Federal Navigation Center Line	▭ Placement Area	● Shoalest Sounding**	0' to -5'
— As-built Pipeline/Cable	▭ Anchorage Area	☆ Beacon, General	-5' to -10'
⋯ Unconfirmed Pipeline/Cable	⊗ Obstruction Point	◇ Red Navigation Buoy	-10' to -20'
— Project Depth Contour	⚓ Wrecks-Submerged	◇ Green Navigation Buoy	-20' to -30'
			-30' to -35'
			-35' to -40'
			-40' to -45'
			-45' and below

NOTES:

Horizontal Coordinate System:
North American Datum of 1983 (NAD83), projected to the State Plane Coordinate System (SPCS), Louisiana South Zone. Distance units in U.S. Survey Feet.

Vertical Datum:
Soundings are shown in feet and indicate depths below Low Water Reference Plane 2007 (NGVD).
Distances on the Mississippi River, above and below Head of Passes are shown at 1 mile intervals.

The location of navigation aids are base on and provided by the U.S. Coast Guard and USACE crew.
2010 Aerial Photography data source: NAIP, USDA-FSA-APFO Aerial Photography Field Office.

Reference is N.O.A.A. Navigation Chart No. 11370.

** Shoalest Sounding per Quarter per Reach.

*** High frequency (200 kHz) survey data represents the first signal return at a sounding location and will include suspended solids, known as "fluff", if present. Low frequency (20 kHz) survey data normally penetrates through this "fluff" layer to depict elevations of consolidated bottom material. Low frequency accuracies may vary depending on channel conditions and bathymeter settings.

Scale:
0 500 1,000 1,500 2,000 2,500 Feet

Revision Number: 3.8-0-20150202