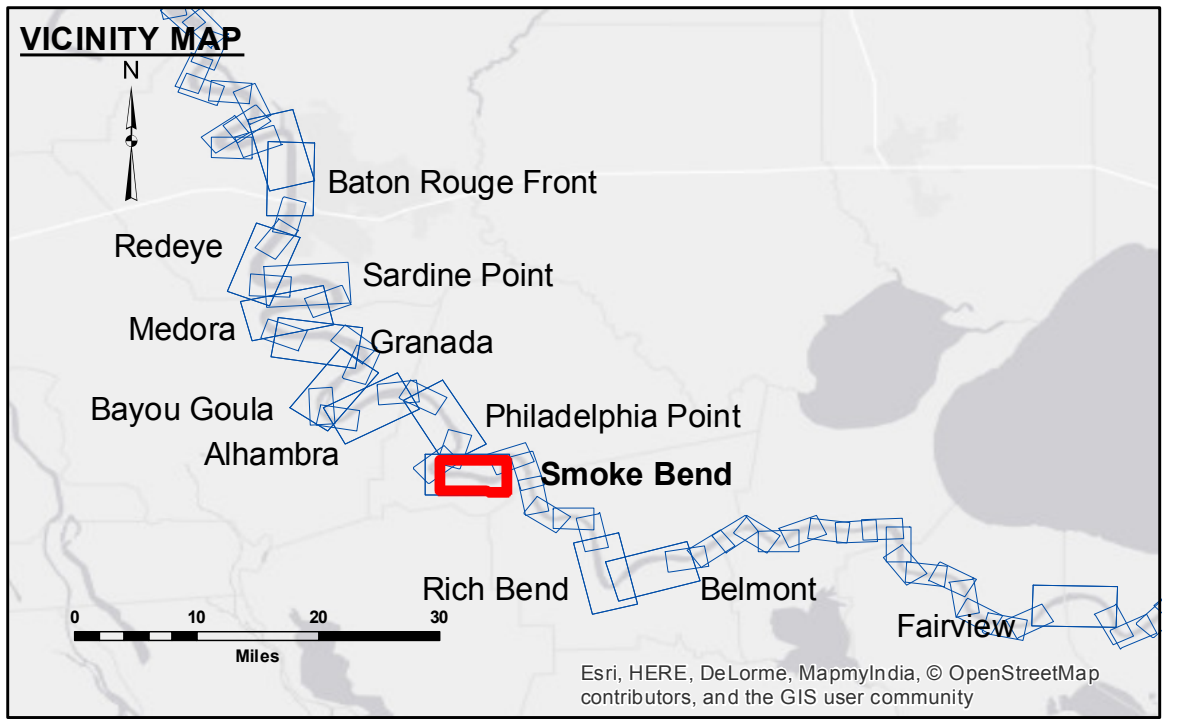


**DISCLAIMER**  
 The United States Government furnishes these data and the recipient accepts and uses them with the express understanding that the data are not to be used for any purpose other than that for which they were originally intended. The user is responsible for the reliability, usability or suitability for any particular purpose of the information. The user is responsible for the accuracy, completeness, timeliness, and any other factors that may affect the use of the information. The user is responsible for the accuracy, completeness, timeliness, and any other factors that may affect the use of the information. The user is responsible for the accuracy, completeness, timeliness, and any other factors that may affect the use of the information.

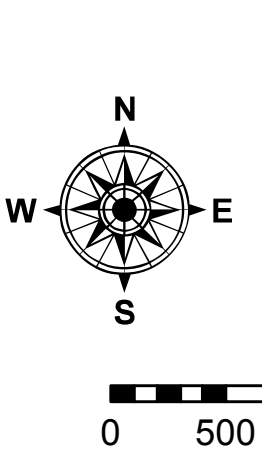
Submitted:	Checked By:
Recommended:	Checked By:
Approved:	Checked By:

**MISSISSIPPI RIVER - B.R. TO GULF  
 SMOKE BEND RECON  
 MR\_22\_SMB\_20160516  
 16 May 2016**



**LEGEND**

--- Federal Navigation Channel	○ Cable Area	□ Borrow Area	■ 0' and above
— Federal Navigation Center Line	□ Placement Area	● Shoalest Sounding**	■ 0' to -5'
— As-built Pipeline/Cable	□ Anchorage Area	★ Beacon, General	■ -5' to -10'
..... Unconfirmed Pipeline/Cable	⊗ Obstruction Point	◆ Red Navigation Buoy	■ -10' to -20'
— Project Depth Contour	✈ Wrecks-Submerged	◆ Green Navigation Buoy	■ -20' to -30'
			■ -30' to -35'
			■ -35' to -40'
			■ -40' to -45'
			■ -45' and below



LWRP: 1.4  
 Gage Reading: BR:31.41, D:21.76 USED:21.7 NGVD  
 Sea Conditions: SLIGHTLY CHOPPY  
 Vessel Name: OB-189  
 Survey Type: CONDITION  
 Sounding Frequency\*\*\*: HIGH

**NOTES:**  
 Horizontal Coordinate System:  
 North American Datum of 1983 (NAD83), projected to the State Plane Coordinate System (SPCS), Louisiana South Zone. Distance units in U.S. Survey Feet.  
 Vertical Datum:  
 Soundings are shown in feet and indicate depths below Low Water Reference Plane 2007 (NGVD).  
 Distances on the Mississippi River, above and below Head of Passes are shown at 1 mile intervals.  
 The location of navigation aids are based on and provided by the U.S. Coast Guard and USACE crew.  
 2010 Aerial Photography data source: NAIP, USDA-FSA-APFO Aerial Photography Field Office.  
 Reference is N.O.A.A. Navigation Chart No. 11370.  
 \*\* Shoalest Sounding per Quarter per Reach.  
 \*\*\* High frequency (200 kHz) survey data represents the first signal return at a sounding location and will include suspended solids, known as "fluff", if present. Low frequency (20 kHz) survey data normally penetrates through this "fluff" layer to depict elevations of consolidated bottom material. Low frequency accuracies may vary depending on channel conditions and bathymeter settings.

**Sheet Reference Number  
 22 of 97**