

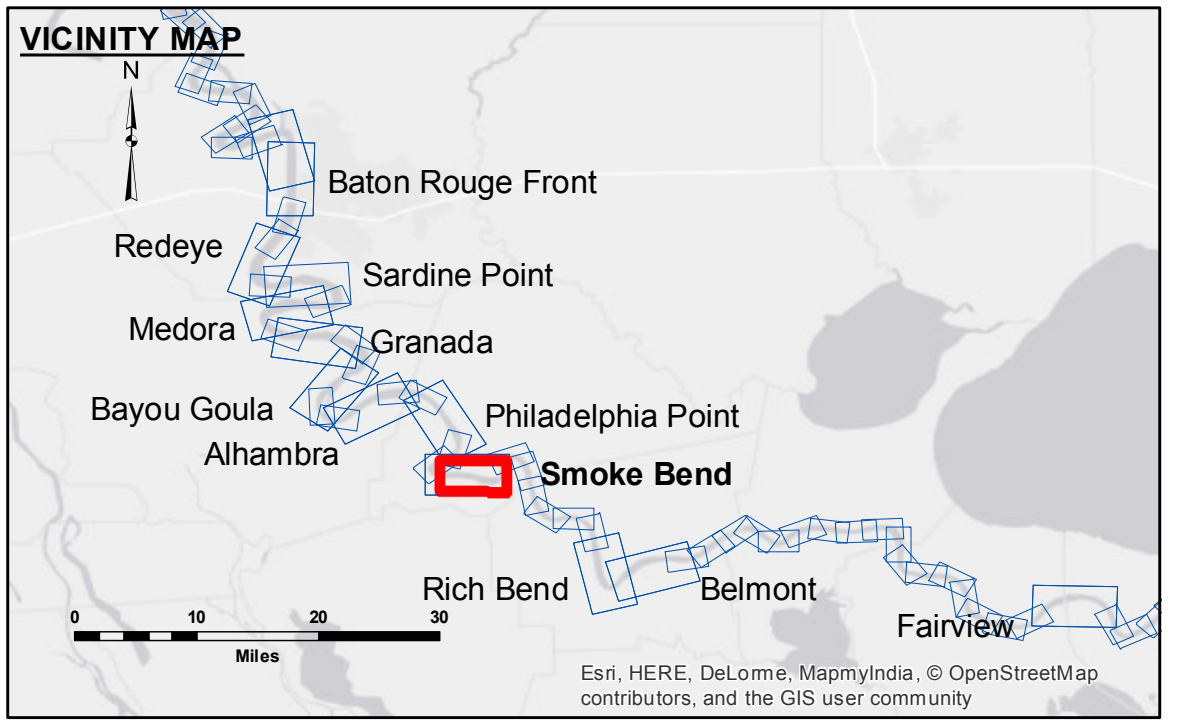
DISCLAIMER
 Access Conditions: The United States Government furnishes these data and the recipient accepts and uses them with the express understanding that the data are not to be used for any purpose other than that for which they were originally collected, and that the user is responsible for the results of any use of the data for other than its intended purpose.
 Distribution Liability: The data represents the results of data collection processing for a specific US Army Corps of Engineers project and is only valid for its intended use, content, time and accuracy specifications. The user is responsible for the results of any use of the data for other than its intended purpose.
 Data Contents: Hydrographic survey data is subject to change rapidly due to several factors including but not limited to dredging, sedimentation, and other natural processes. The user is responsible for the accuracy of the data for its intended use. The information depicted on this map represents the results of a survey conducted on the date of the survey and is not intended to represent the general condition existing at that time.

Submitted:	Checked By:
Recommended:	ATD
Approved:	ATD

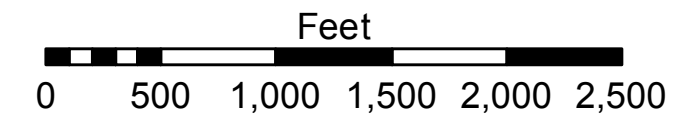
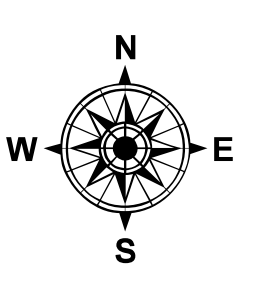
U.S. ARMY CORPS OF ENGINEERS
 NEW ORLEANS DISTRICT

MISSISSIPPI RIVER - B.R. TO GULF
SMOKE BEND RECON
MR_22_SMB_20160719
19 July 2016

Sheet Reference Number
22 of 97



LEGEND		LEGEND		LEGEND	
--- Federal Navigation Channel	○ Cable Area	□ Borrow Area	■ 0' and above	○ 0' to -5'	○ 0' to -5'
— Federal Navigation Center Line	□ Placement Area	● Shoalest Sounding**	■ -5' to -10'	○ -5' to -10'	○ -5' to -10'
— As-built Pipeline/Cable	□ Anchorage Area	★ Beacon, General	■ -10' to -20'	○ -10' to -20'	○ -10' to -20'
..... Unconfirmed Pipeline/Cable	⊗ Obstruction Point	◆ Red Navigation Buoy	■ -20' to -30'	○ -20' to -30'	○ -20' to -30'
— Project Depth Contour	✈ Wrecks-Submerged	◆ Green Navigation Buoy	■ -30' to -35'	○ -30' to -35'	○ -30' to -35'
			■ -35' to -40'	○ -35' to -40'	○ -35' to -40'
			■ -40' to -45'	○ -40' to -45'	○ -40' to -45'
			■ -45' and below	○ -45' and below	○ -45' and below



LWRP: 1.4
 Gage Reading: D:13.3 BR:21.7 USED:13.2 NGVD
 Sea Conditions: CALM
 Vessel Name: M/V LAFOURCHE
 Survey Type: CONDITION
 Sounding Frequency***: HIGH

NOTES:
 Horizontal Coordinate System:
 North American Datum of 1983 (NAD83), projected to the State Plane Coordinate System (SPCS), Louisiana South Zone. Distance units in U.S. Survey Feet.
 Vertical Datum:
 Soundings are shown in feet and indicate depths below Low Water Reference Plane 2007 (NGVD).
 Distances on the Mississippi River, above and below Head of Passes are shown at 1 mile intervals.
 The location of navigation aids are base on and provided by the U.S. Coast Guard and USACE crew.
 2010 Aerial Photography data source: NAIP, USDA-FSA-APFO Aerial Photography Field Office.
 Reference is N.O.A. Navigation Chart No. 11370.
 ** Shoalest Sounding per Quarter per Reach.
 *** High frequency (200 kHz) survey data represents the first signal return at a sounding location and will include suspended solids, known as "fluff", if present. Low frequency (20 kHz) survey data normally penetrates through this "fluff" layer to depict elevations of consolidated bottom material. Low frequency accuracies may vary depending on channel conditions and fathometer settings.