

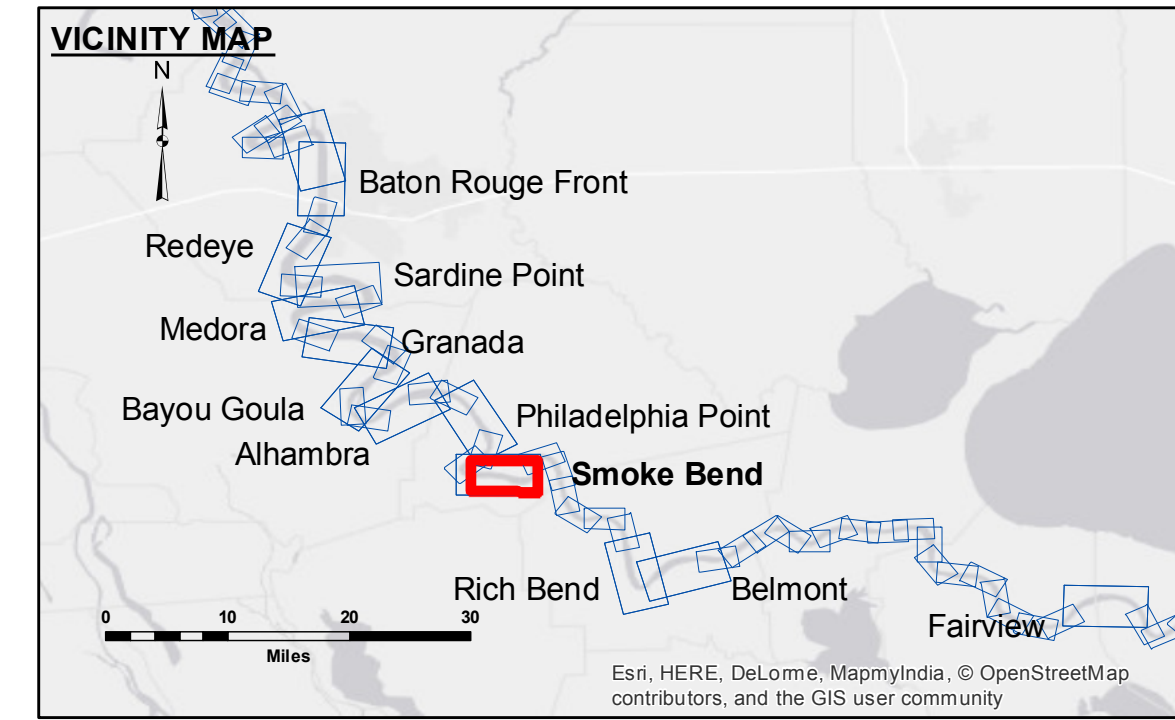
**DISCLAIMER:** The information depicted on this map represents the results of a data collection/processing for a specific US Army Corps of Engineers project. It is not to be used for any other purpose than the one intended. The user is responsible for the results. The accuracy, reliability, usability, or suitability for any particular purpose of the data is not warranted. The user is responsible for the results. The information depicted on this map represents the results of a data collection/processing for a specific US Army Corps of Engineers project. It is not to be used for any other purpose than the one intended. The user is responsible for the results. The accuracy, reliability, usability, or suitability for any particular purpose of the data is not warranted. The user is responsible for the results.

|   |                      |
|---|----------------------|
| Submitted:                                    | Surveyed By: SPS/DJS |
| Recommended: Chet, Survey Section             | Plotted By: BD       |
| Approved: Chet, Waterways Maintenance Section | Checked By: AC       |

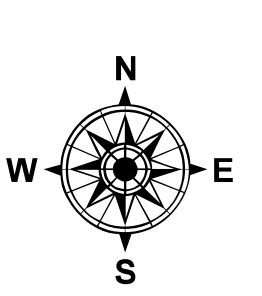
U.S. ARMY CORPS OF ENGINEERS  
NEW ORLEANS DISTRICT

MISSISSIPPI RIVER - B.R. TO GULF  
SMOKE BEND RECON  
MR\_22\_SMB\_20161004  
04 October 2016

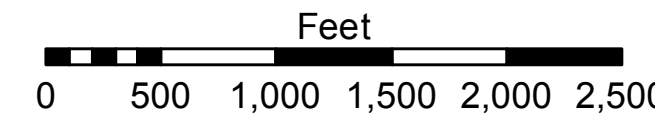
Sheet Reference Number  
22 of 97



| LEGEND                           |                       |
|----------------------------------|-----------------------|
| — Federal Navigation Channel     | — Cable Area          |
| — Federal Navigation Center Line | — Placement Area      |
| — As-built Pipeline/Cable        | — Anchorage Area      |
| — Unconfirmed Pipeline/Cable     | — Obstruction Point   |
| — Project Depth Contour          | — Wrecks-Submerged    |
| — Borrow Area                    | — Shoalest Sounding** |
| ☆ Beacon, General                | ◆ Red Navigation Buoy |
| ◆ Green Navigation Buoy          |                       |



LWRP: 1.4  
Gage Reading: BR:15.6 D:9.0 USED:8.9 NGVD  
Sea Conditions: CALM  
Vessel Name: M/V LAFOURCHE  
Survey Type: CONDITION  
Sounding Frequency\*\*\*: HIGH



**NOTES:**  
Horizontal Coordinate System: North American Datum of 1983 (NAD83), projected to the State Plane Coordinate System (SPCS), Louisiana South Zone. Distance units in U.S. Survey Feet.  
Vertical Datum: Soundings are shown in feet and indicate depths below Low Water Reference Plane 2007 (NGVD).  
Distances on the Mississippi River, above and below Head of Passes are shown at 1 mile intervals.  
The location of navigation aids are based on and provided by the U.S. Coast Guard and USACE crew.  
2010 Aerial Photography data source: NAIP, USDA-FSA-APFO Aerial Photography Field Office.  
Reference is N.O.A. Navigation Chart No. 11370.  
\*\* Shoalest Sounding per Quarter per Reach.  
\*\*\* High frequency (200 kHz) survey data represents the first signal return at a sounding location and will include suspended solids, known as "fluff", if present. Low frequency (20 kHz) survey data normally penetrates through this "fluff" layer to depict elevations of consolidated bottom material. Low frequency accuracies may vary depending on channel conditions and fathometer settings.

Revision Number:  
3.8-9-20150202